



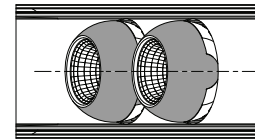
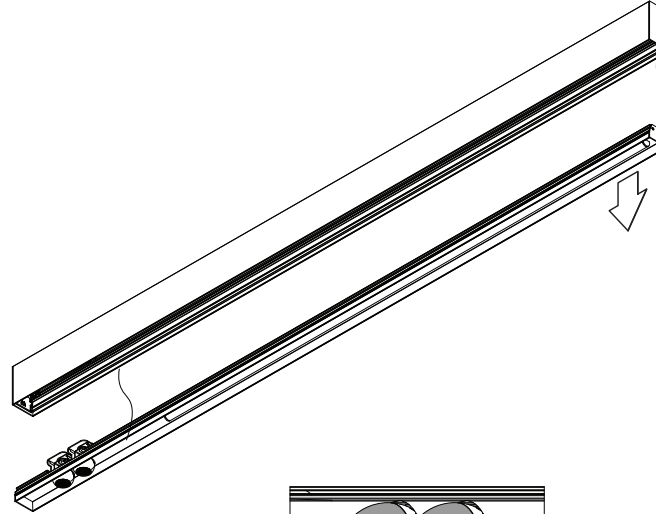
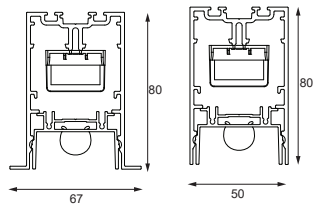
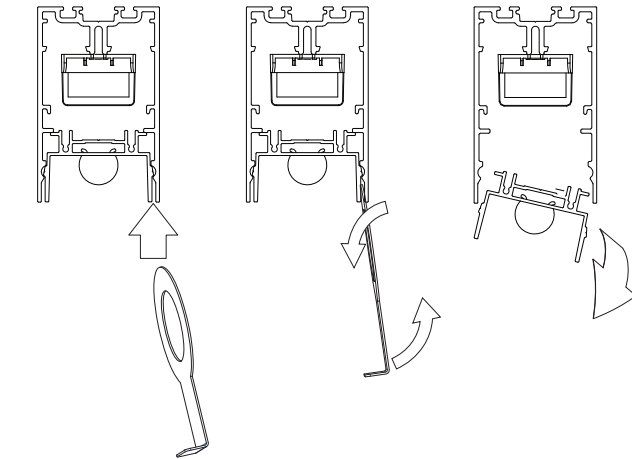
SLD50 NAKED

INSTALLATION INSTRUCTIONS

SLD50 naked general installation manual

93580009_93560032_93580041_93580046_93580018_93580006

OPEN PROFILE



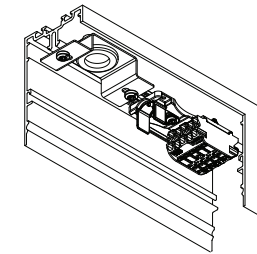
align Eyeballs before
open/close profile

ONLY TO BE INSTALLED OUTSIDE ARM'S REACH

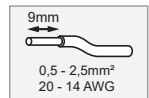
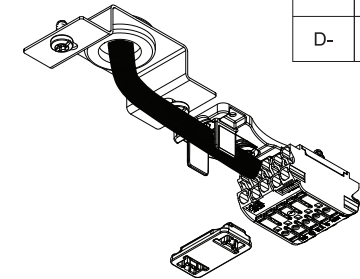


DO NOT TOUCH
REFLECTOR

CONNECTION

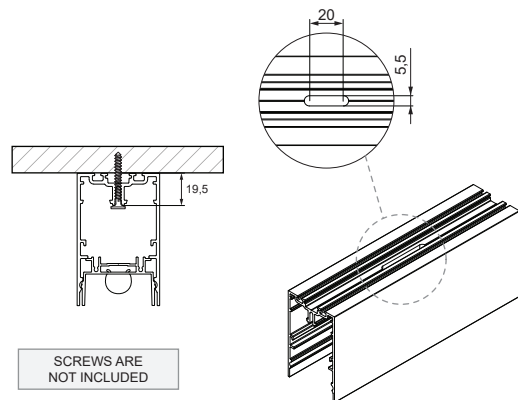


N	BLUE
L	BROWN
⊕	GREEN YELLOW
D+	RED
D-	BLACK

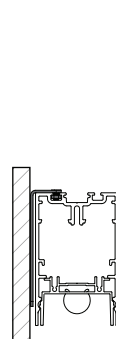


MOUNTING OPTIONS

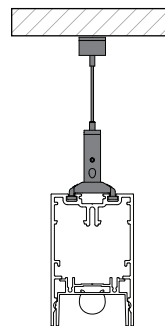
SURFACE



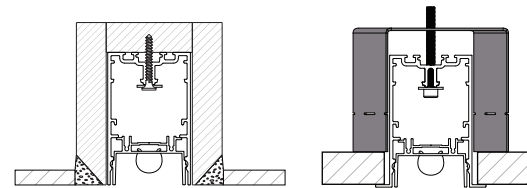
WALL*



SUSPENDED*



RECESSED (TRIMLESS)*



* SEE INSTRUCTION MANUALS



On site conditions (e.g. heat, humidity, ...) can lead to expansion of the diffuser. Therefore onsite shortening of the diffuser can be required



Replace protective shield when broken. The luminaire shall only be used complete with its protective shield.
Reference number: 1XXXXXX



LIGHT SOURCE - DO NOT TOUCH LED

Touching the LED can result in permanent damage of the light source. The light source contained in this luminaire shall only be replaced by the manufacturer or his service agent or a similar qualified person.



PREVENTING ELECTROSTATIC DAMAGE

A discharge of static electricity may damage sensitive components. Therefore do not touch the LED nor the stripped parts of the wires with bare hands. Always be properly insulated by using ESD gloves.



220-230V
50-60Hz

1-10V

PUSH

DALI



IP 20



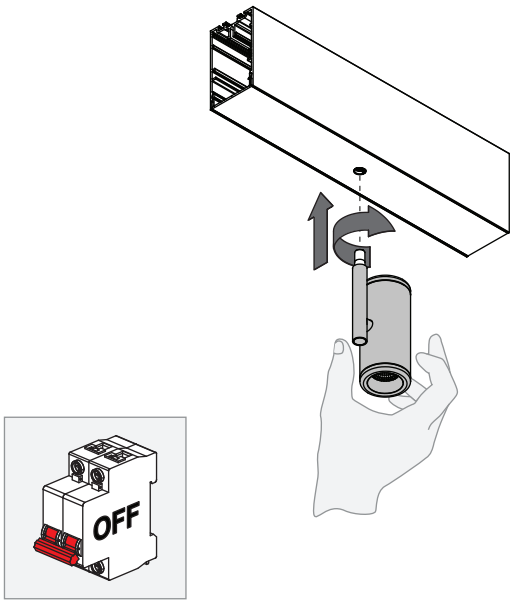
UK
CA



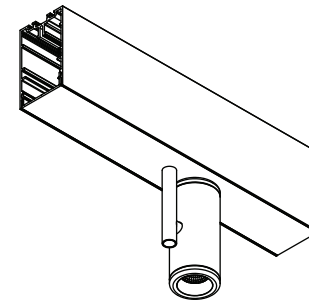
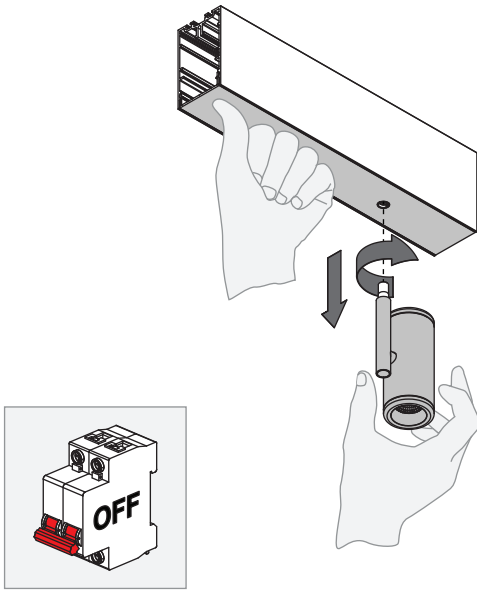
SLD50 / SLD50 high / SLD50 NAKED Modupoint LED GE for 1x Jack

93568000_93581000

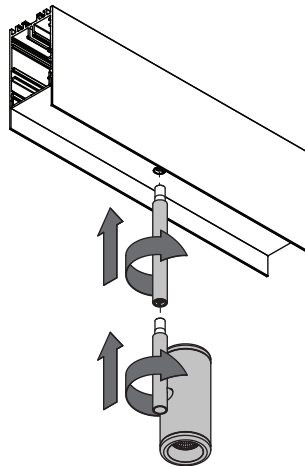
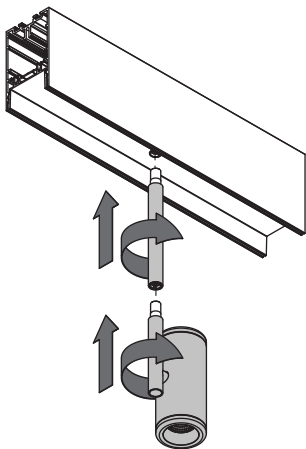
1 INSTALLATION



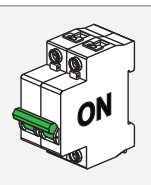
2 UNINSTALL



SLD50 NAKED & SLD50 HIGH MUST BE COMBINED WITH MODUPOINT LED STICK *



* Modupoint LED stick required except for Marbulito jack



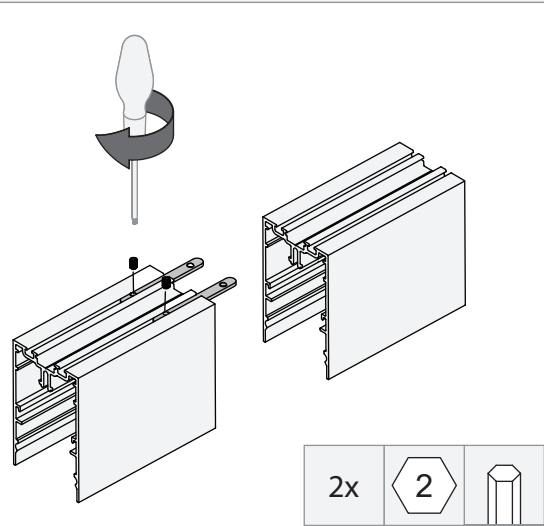
JACK FIXTURES

For jack fixtures product range check www.supermodular.com or connect with your sales contact.

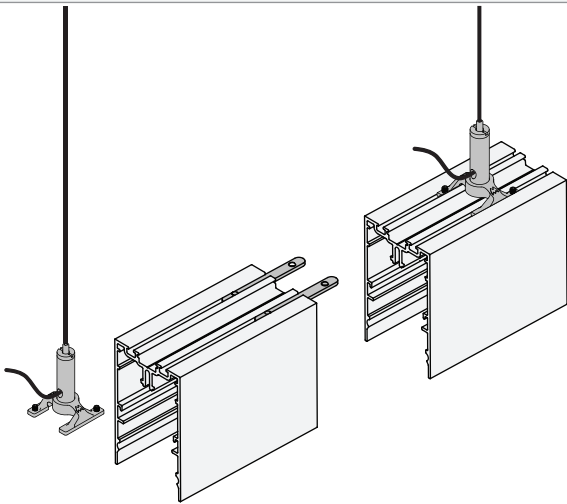
SLD50/SLD50H Connection 180° (Suspended)

93560063_93560065-B1

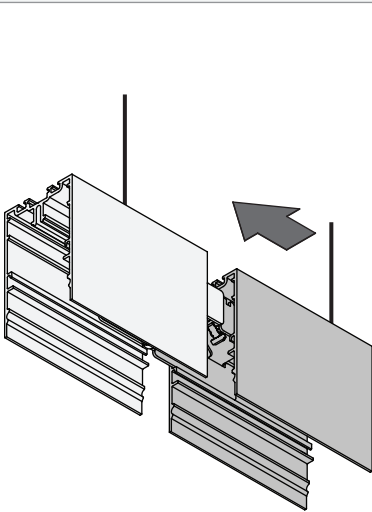
Insert connection plates



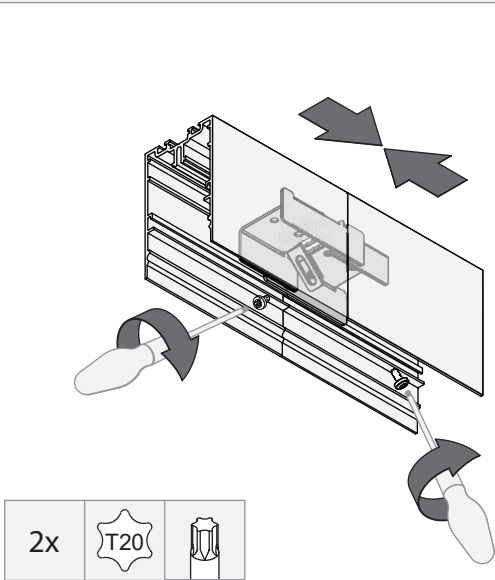
SHOULD BE USED WITH



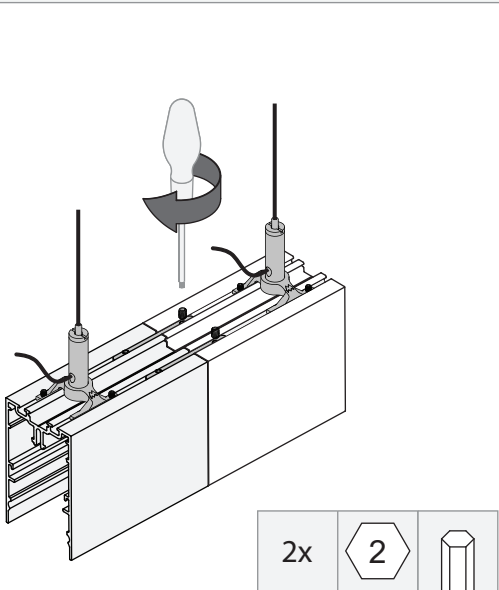
Slide second base profile over the connection plates.



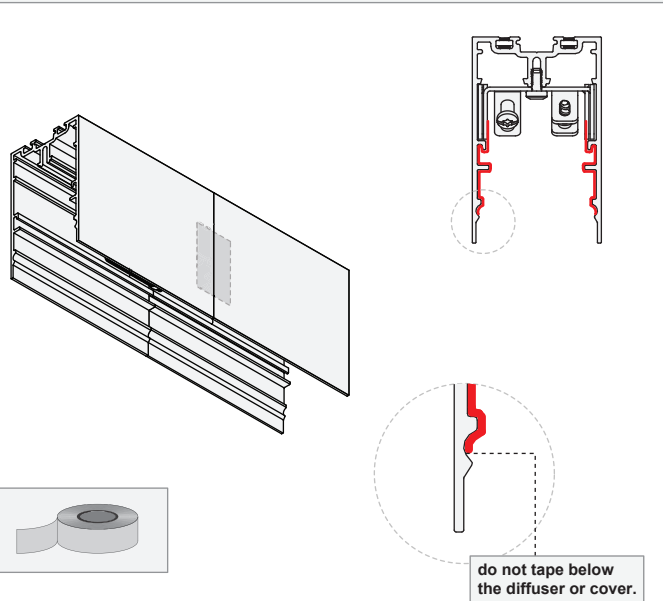
Tighten screws to clamp both profiles together.



Tighten screws of connection plates with the profiles together.



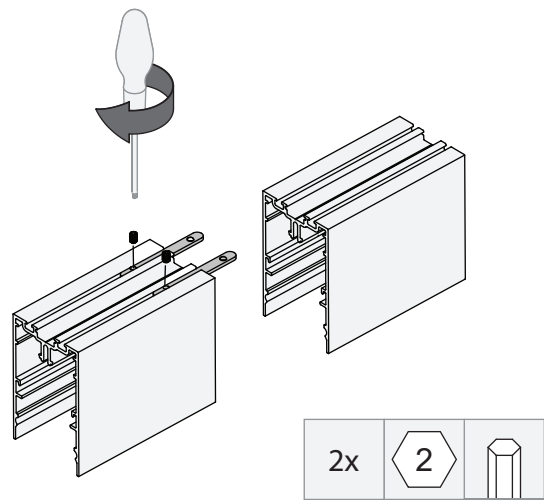
Add tape to prevent lightspill



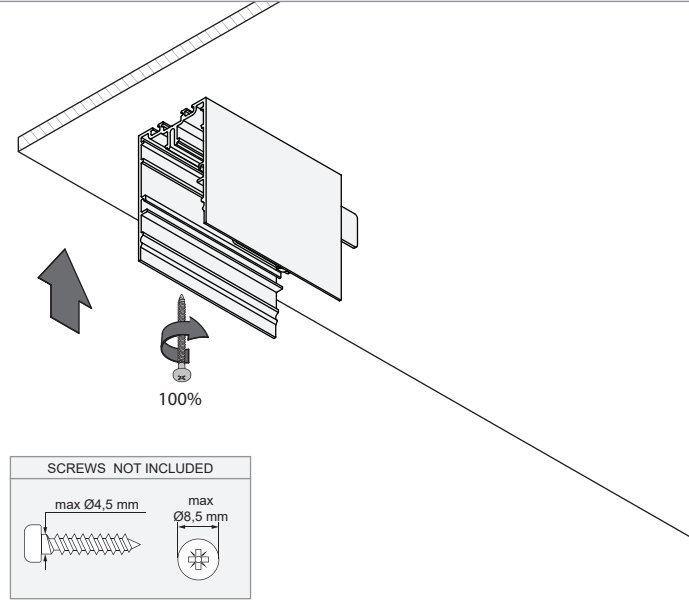
SLD50/SLD50H Connection 180° (Surface)

93560063_93560065-B2

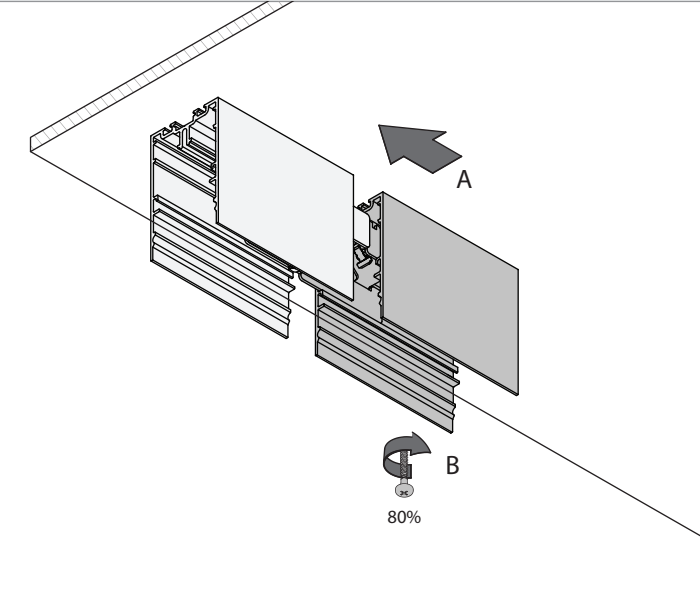
Insert connection plates



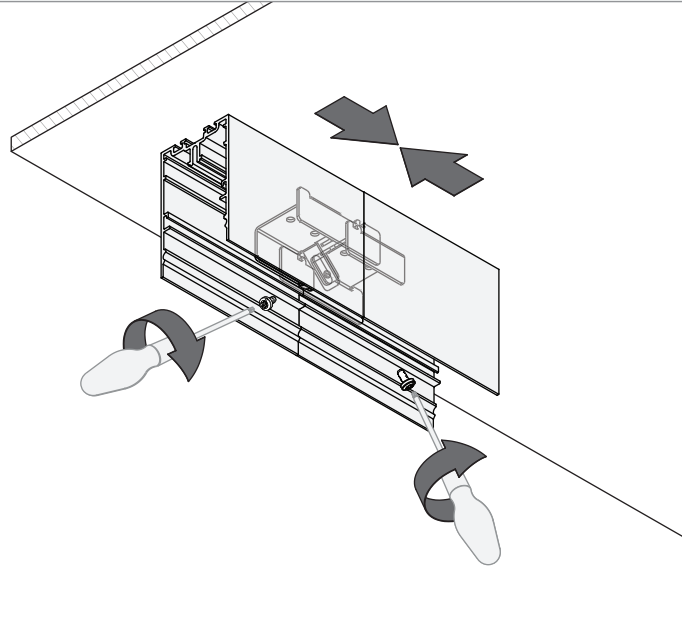
Mount the first base profile.



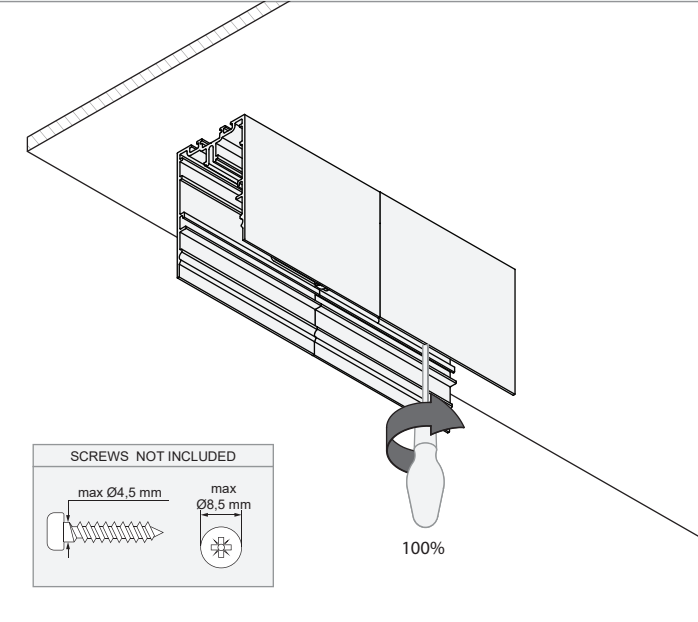
Slide second base profile over the connection plates.



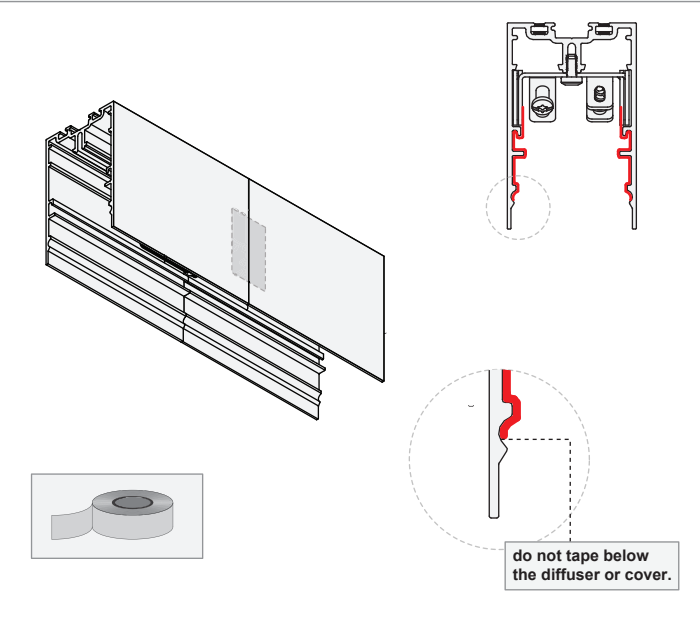
Tighten screws to clamp both profiles together.



Mount the second base profile.

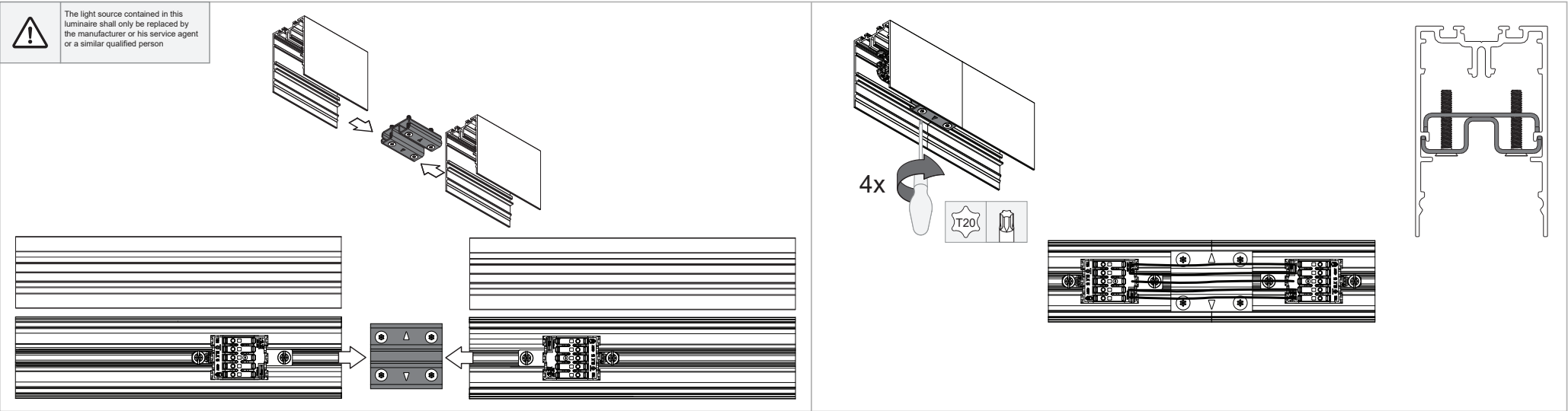


Add tape to prevent lightspill



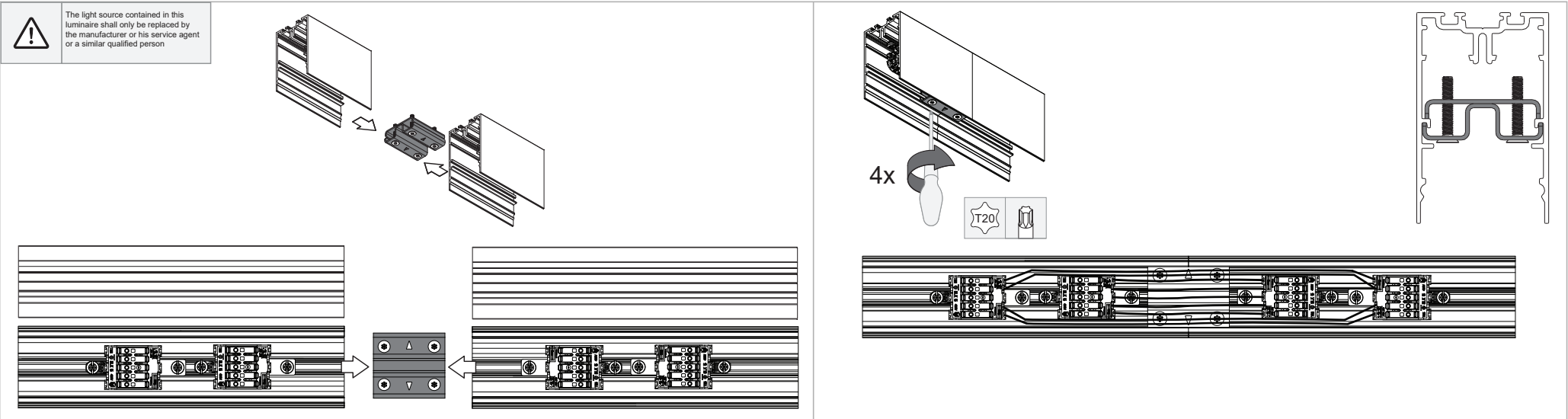
SLD50/SLD50H Connection 180° (For Recessed Mounting) 3-5P

93560066



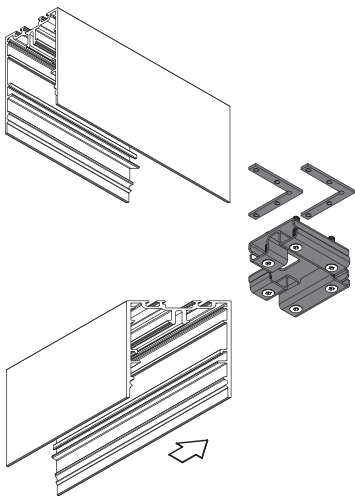
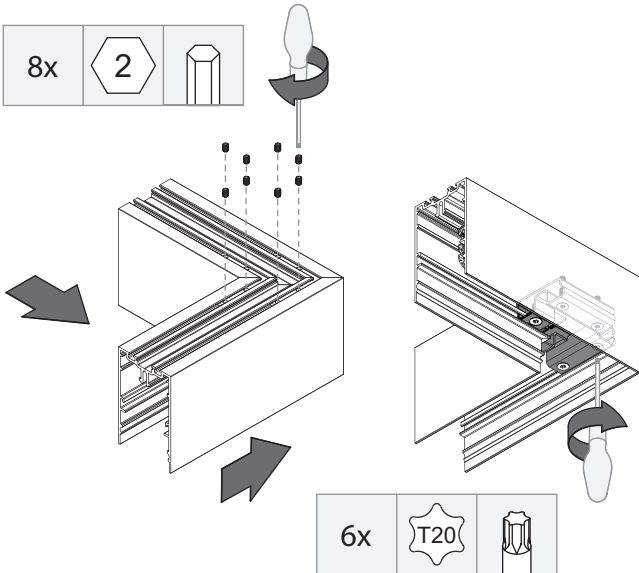
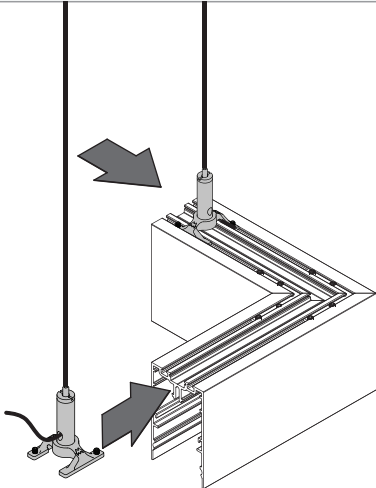
SLD50/SLD50H Connection 180° (For Recessed Mounting) 6-9P

93560067

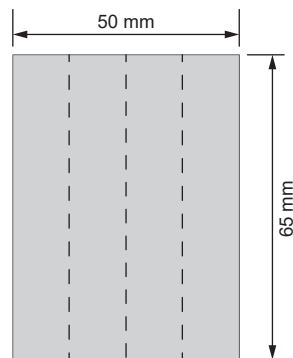


SLD50/SLD50H Connection 90° (Suspended)


93560053_93560059-B1

Insert connection plates	Tighten screws to clamp both profiles together.	Should be used with
		

Add tape to prevent lightspill.



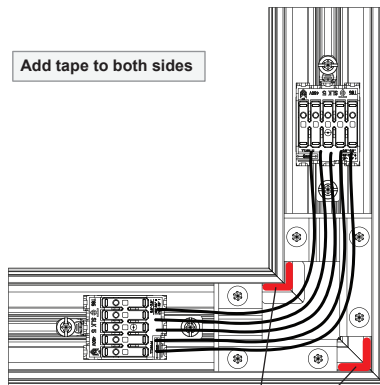
A rectangular piece of tape with a width of 50 mm and a height of 65 mm. Two vertical dashed lines are shown, dividing the tape into three equal sections. The dimensions are indicated by arrows and text labels.



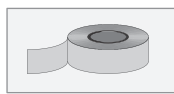
A sequence of three small diagrams showing the process of cutting the tape in half with scissors and then folding it in half lengthwise.

Cut and fold in half

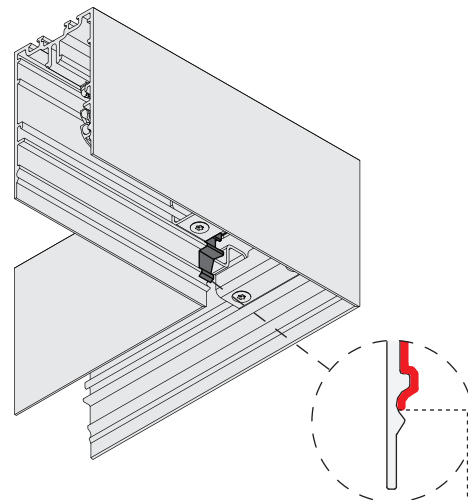
Add tape to both sides



A diagram showing the tape being applied to both sides of the connection plates. The tape is shown being applied to the top and bottom of the connection plates, with red arrows indicating the direction of application.



A diagram showing a roll of tape, indicating the material used for the application.

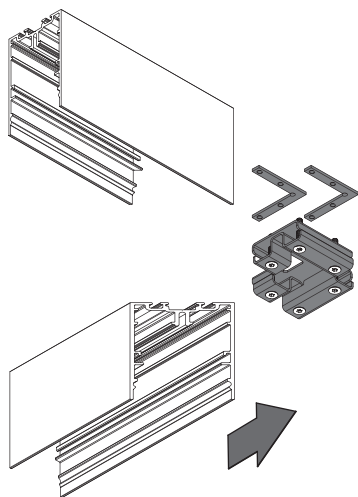
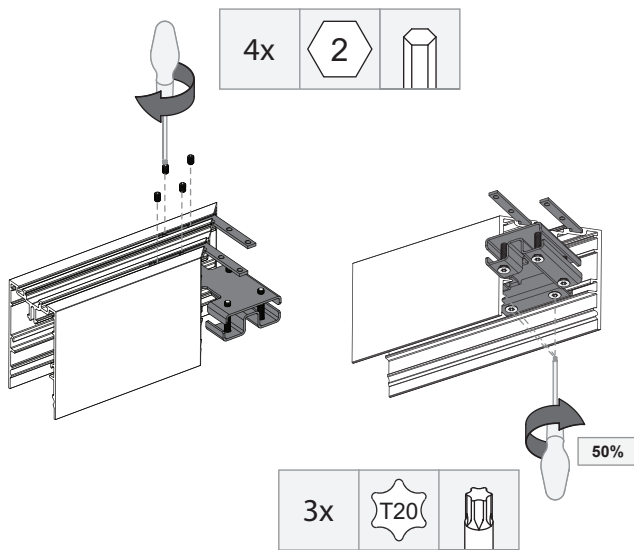
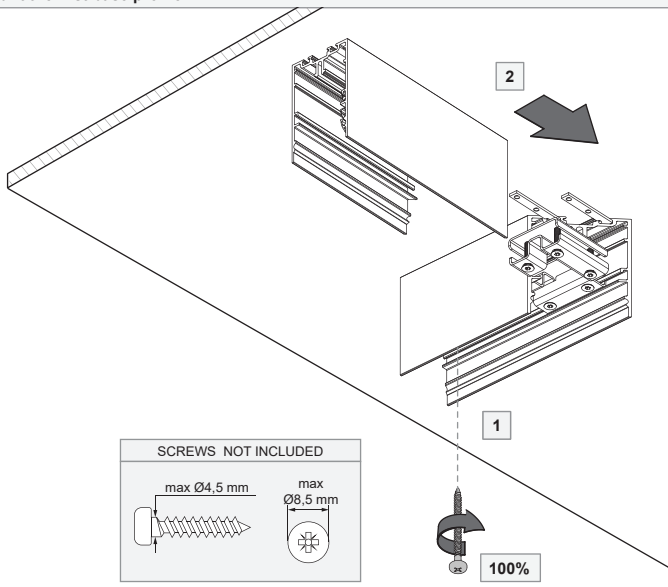
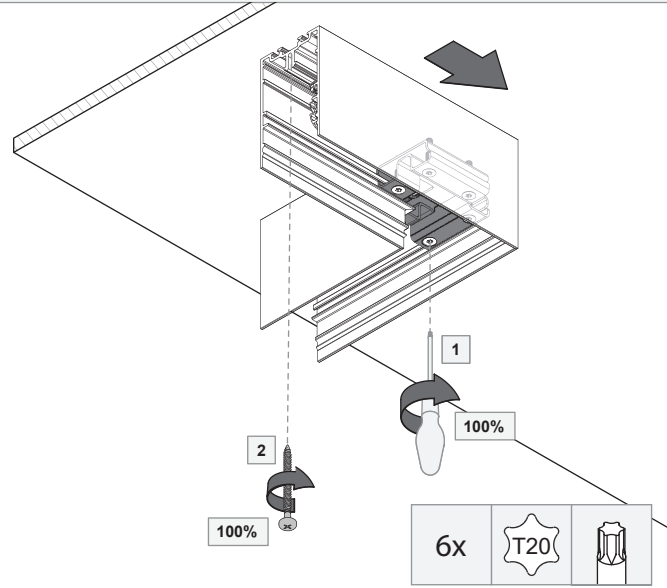
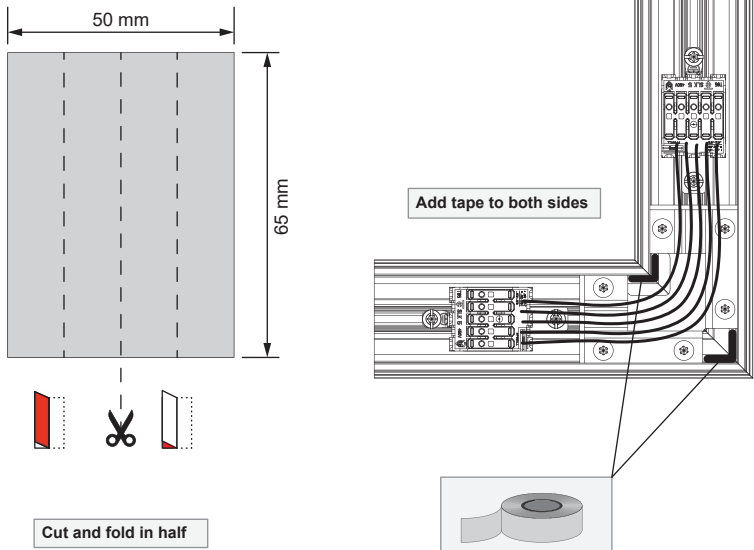


A diagram showing the tape being applied to the connection plates. A circular inset shows a close-up of the tape being applied to the connection plates, with a red arrow indicating the direction of application. A warning label is present: "do not tape below the diffuser or cover."

do not tape below
the diffuser or cover.

SLD50/SLD50H Connection 90° (Surface)

93560053_93560059-B2

<p>Insert connection plates</p> 	<p>Do not screw tight until after installation of second base profile.</p> 	<p>Mount the first base profile</p>  <p>SCREWS NOT INCLUDED</p> <p>max Ø4,5 mm max Ø8,5 mm</p>
<p>Mount second profile. Tighten all screws to clamp both profiles together.</p> 	<p>Add tape to prevent lightspill</p>  <p>50 mm</p> <p>65 mm</p> <p>Add tape to both sides</p> <p>do not tape below the diffuser or cover.</p>	

SLD50 recessed bracket trimless

93590056

Cut-out size

(Length + 5mm) x 56mm

LENGTH
PROFILE LENGTH + 5mm

WIDTH
MINIMUM 54mm
MAXIMUM 56mm

MINIMUM 8mm
MAXIMUM 25mm

PROFILE LENGTH

see profile drawing for distance

SCREWS NOT INCLUDED

4

Use FLEX filler

OFF

Use FLEX filler

Use FLEX filler

Dimensions.

147 mm
137 mm

min. 6mm
max. 30mm

110mm
115mm

min. 2mm
max. 3mm

50

min. 2mm
max. 3mm

Use FLEX filler

Use FLEX filler

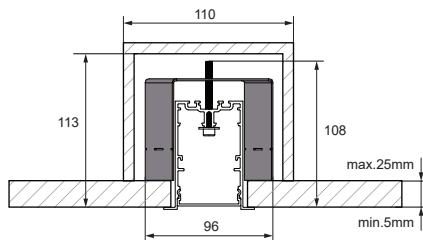
Replace protective shield when broken. The luminaire shall only be used complete with its protective shield.
On site conditions (e.g. heat, humidity, ...) can lead to expansion of the diffuser. Therefore onsite shortening of the diffuser can be required.

LIGHT SOURCE - DO NOT TOUCH LED
Touching the LED can result in permanent damage of the light source. The light source and/or driver contained in this luminaire shall only be replaced by the manufacturer or his service agent or a similar qualified person.

PREVENTING ELECTROSTATIC DAMAGE
A discharge of static electricity may damage sensitive components. Therefore do not touch the LED nor the stripped parts of the wires with bare hands. Always be properly insulated by using ESD gloves.

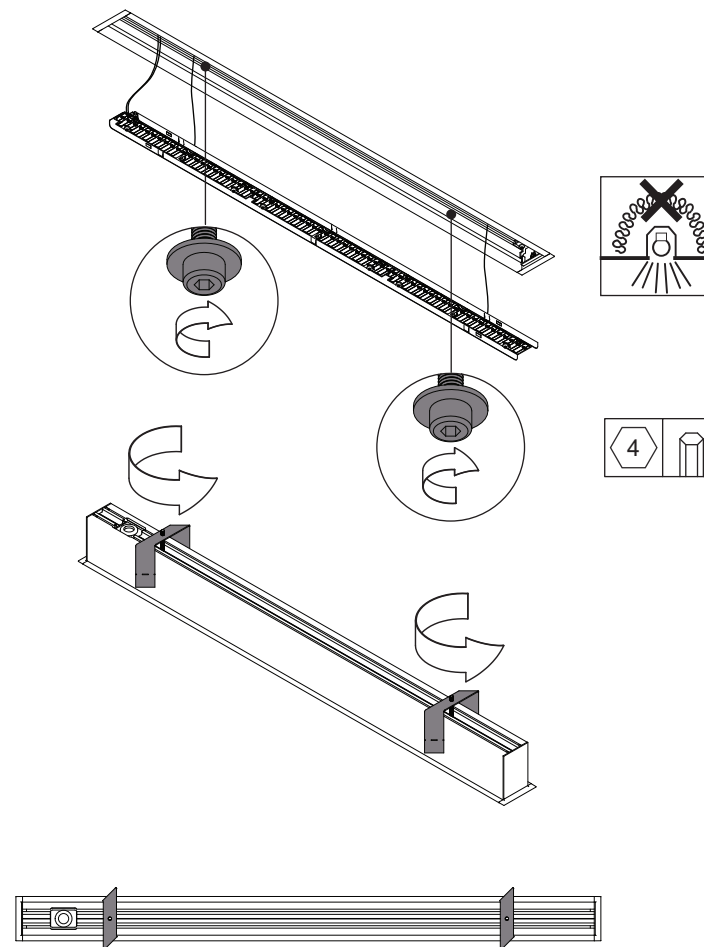
DRIVERS & ACCESSORIES
For latest version of driver matrix and available accessories check www.supermodular.com or connect with your sales contact.

93560057




Touching the LED can result in permanent damage of the light source. The light source contained in this luminaire shall only be replaced by the manufacturer or his service agent or a similar qualified person.

On site conditions (e.g. heat, humidity, ...) can lead to expansion of the diffuser. Therefor onsite shortening of the diffuser can be required



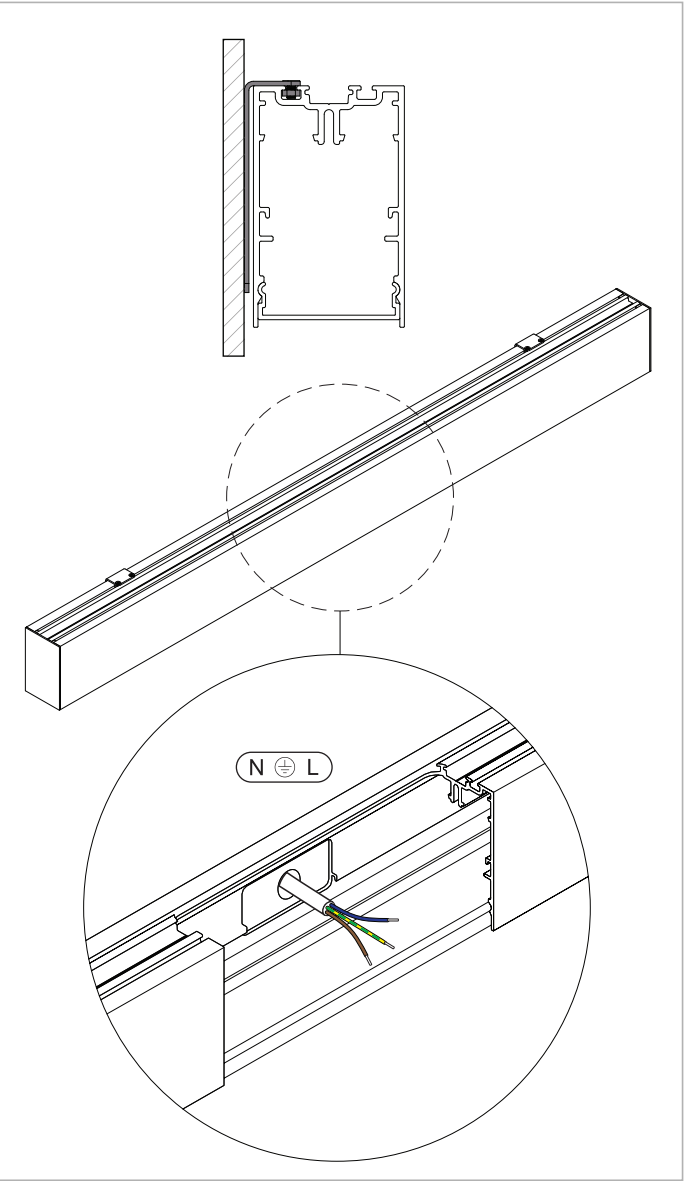
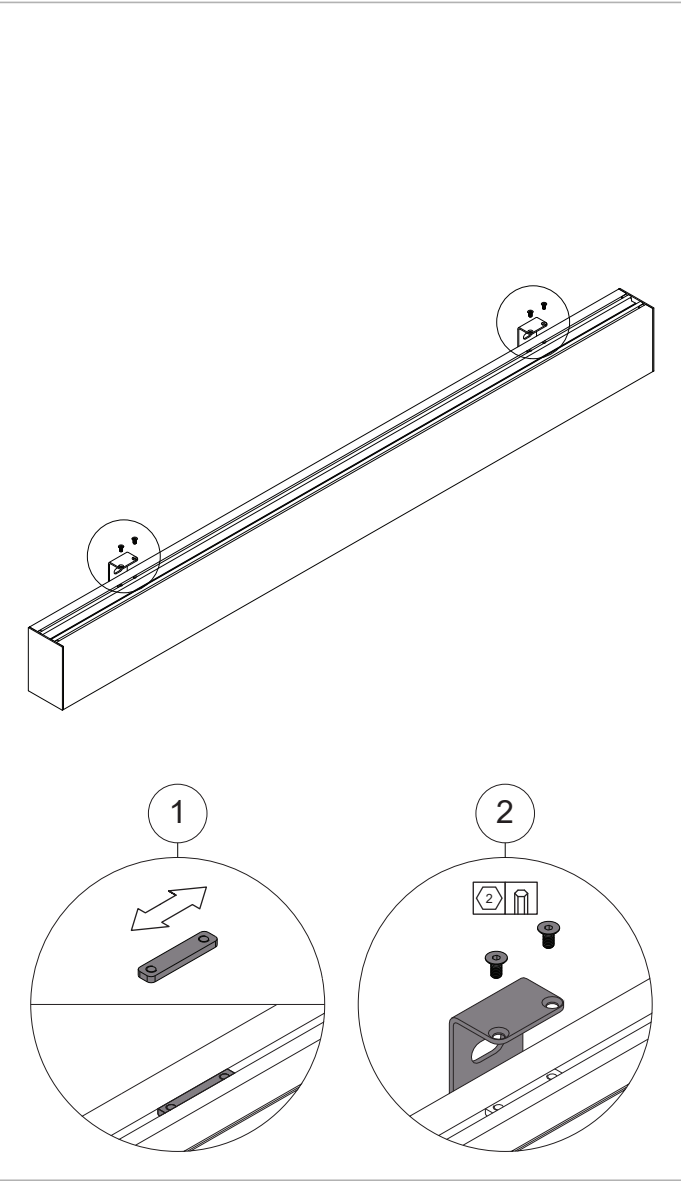
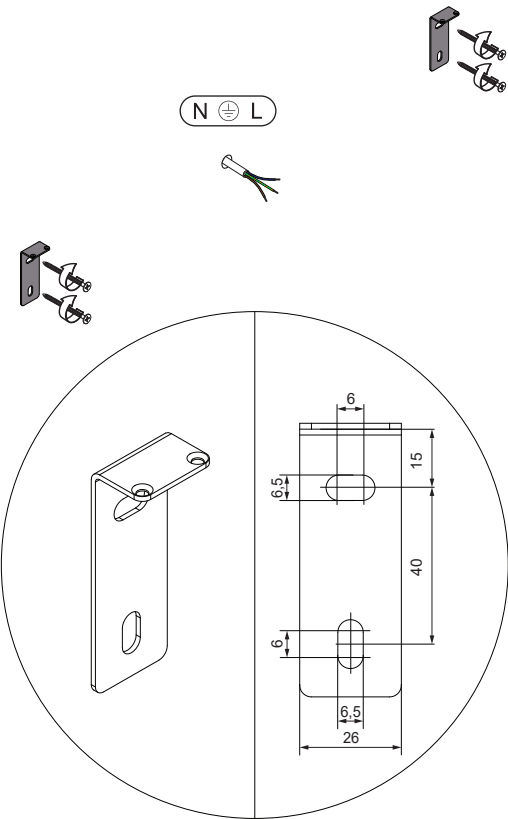
SLD50 lateral wall brack

93560705_93560709_93560732



The light source contained in this luminaire shall only be replaced by the manufacturer or his service agent or a similar qualified person

screws are not included









220-230V
50-60Hz



1-10V



PUSH



DALI

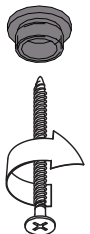




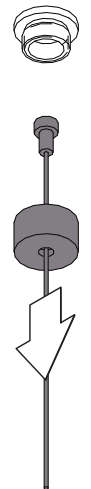


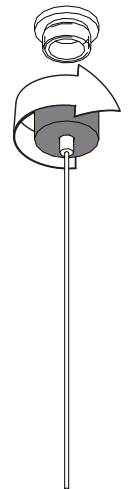
SLD50 suspension


93560805_93560809_93560832




screws are not included









The light source contained in this luminaire shall only be replaced by the manufacturer or his service agent or a similar qualified person

