



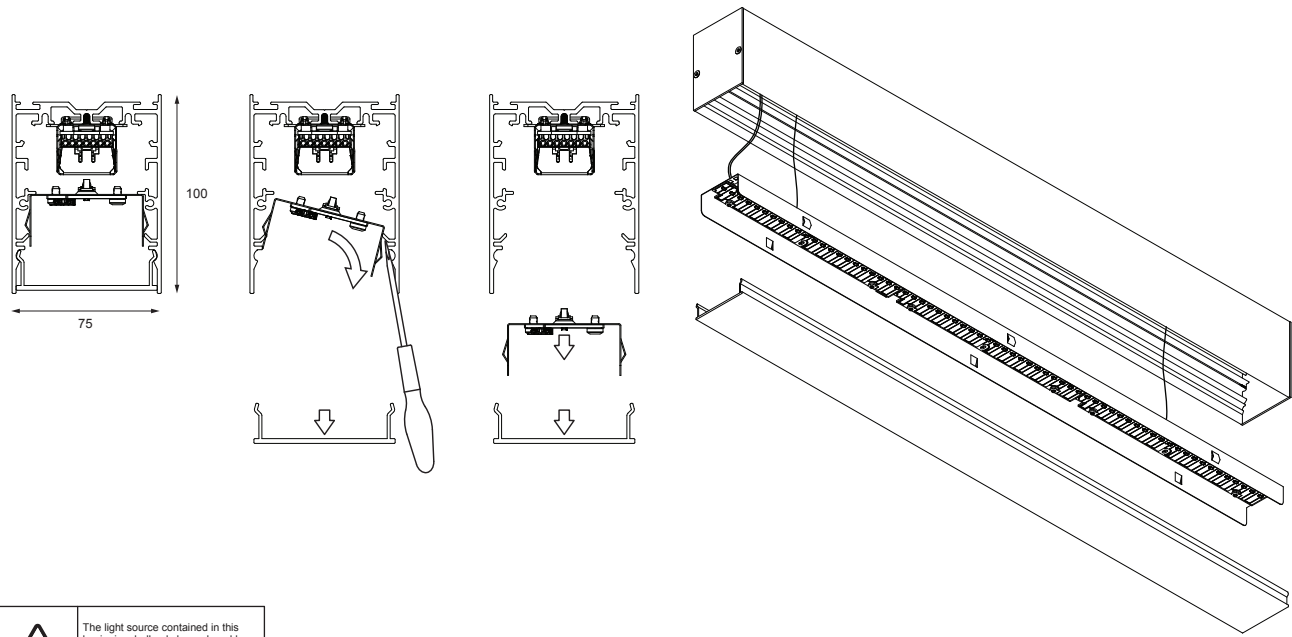
SLD75


INSTALLATION INSTRUCTIONS

SLD75 - general installation manual

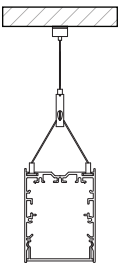
93550007_93550009_93550032

open



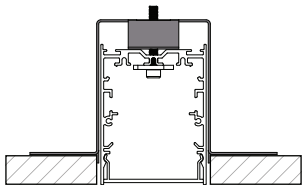
 The light source contained in this luminaire shall only be replaced by the manufacturer or his service agent or a similar qualified person

fix - suspension



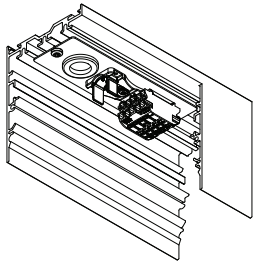
see instruction manual


fix - recessed (trimless)

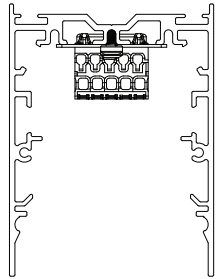
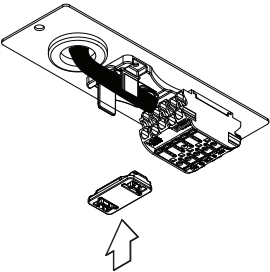
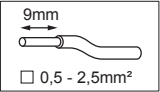


see instruction manual

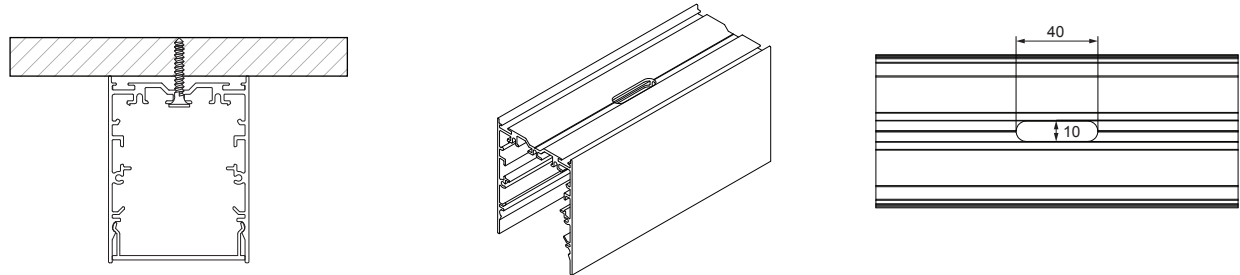
connection



N	BLUE
L	BROWN
	YELLOW/GREEN
DIM +	RED
DIM -	BLACK



fix - ceiling



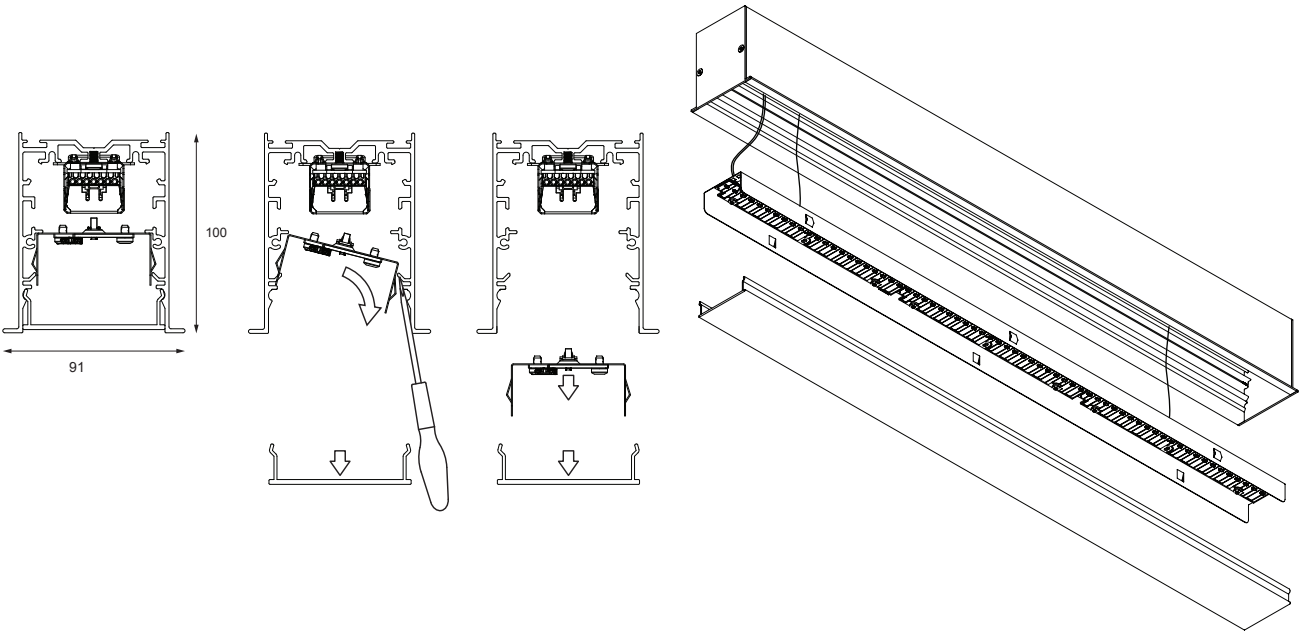
screws are not included




SLD75 flange - general installation manual

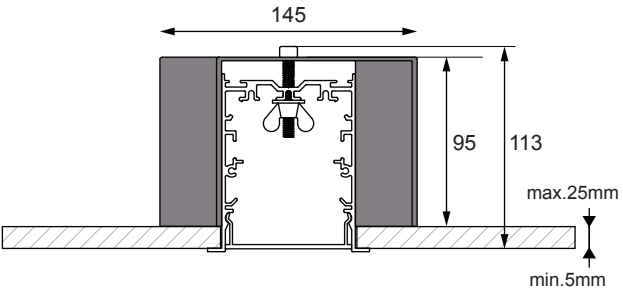
93552004_93552009_93552032

open



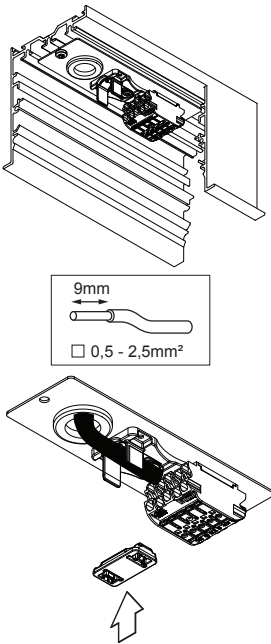
 The light source contained in this luminaire shall only be replaced by the manufacturer or his service agent or a similar qualified person

fix - recessed (flange)

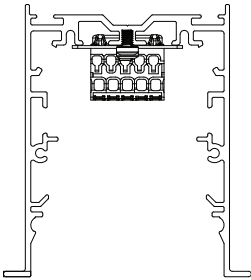


see instruction manual

connection

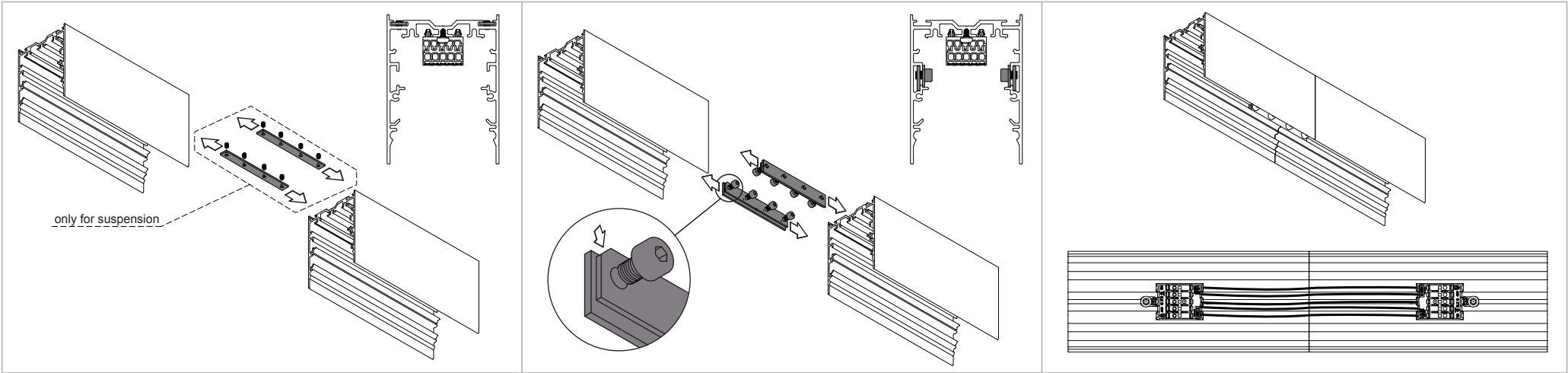


N	BLUE
L	BROWN
	YELLOW/GREEN
DIM +	RED
DIM -	BLACK



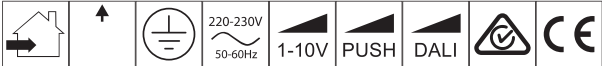
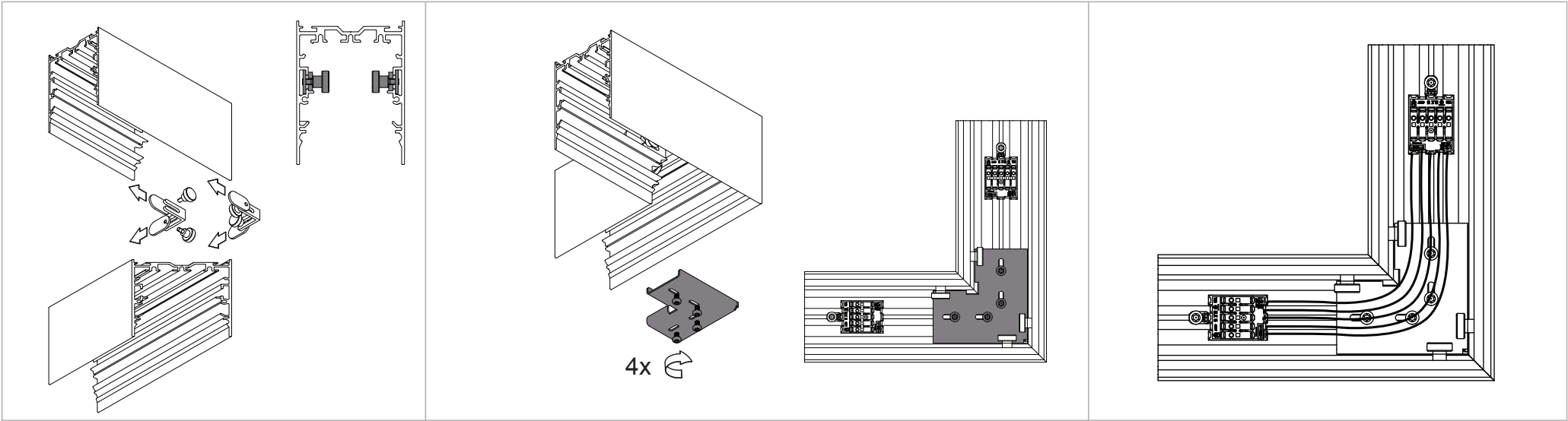
SLD75 connection 180°

93550050



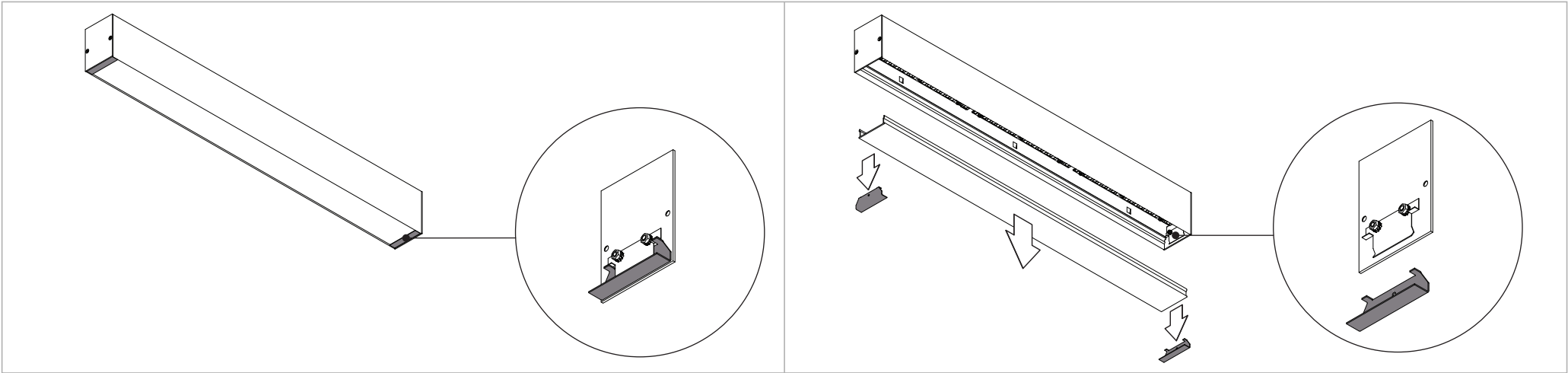
SLD75 connection 90°

93550060



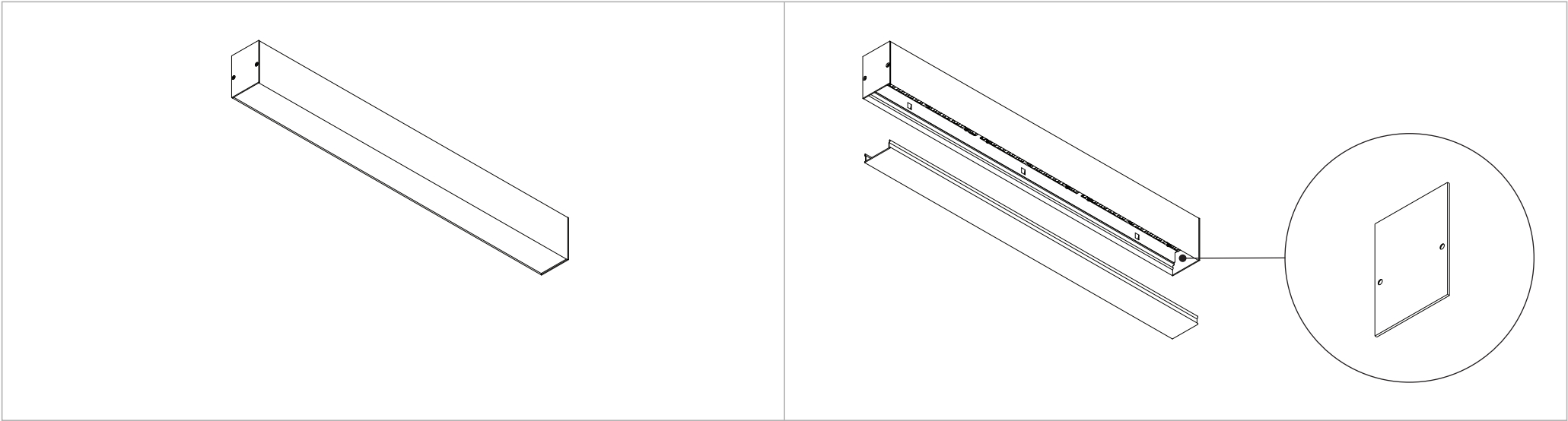
SLD75 endplate incl. inner flange

93550181_93550881_93550982



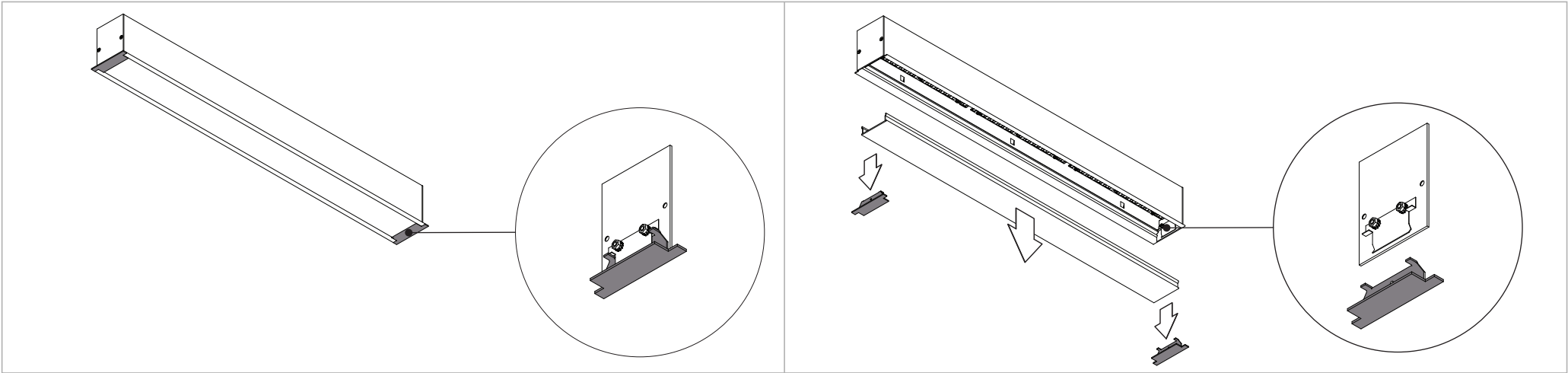
SLD75 endplate excl. inner flange

93550183_93550883_93550983



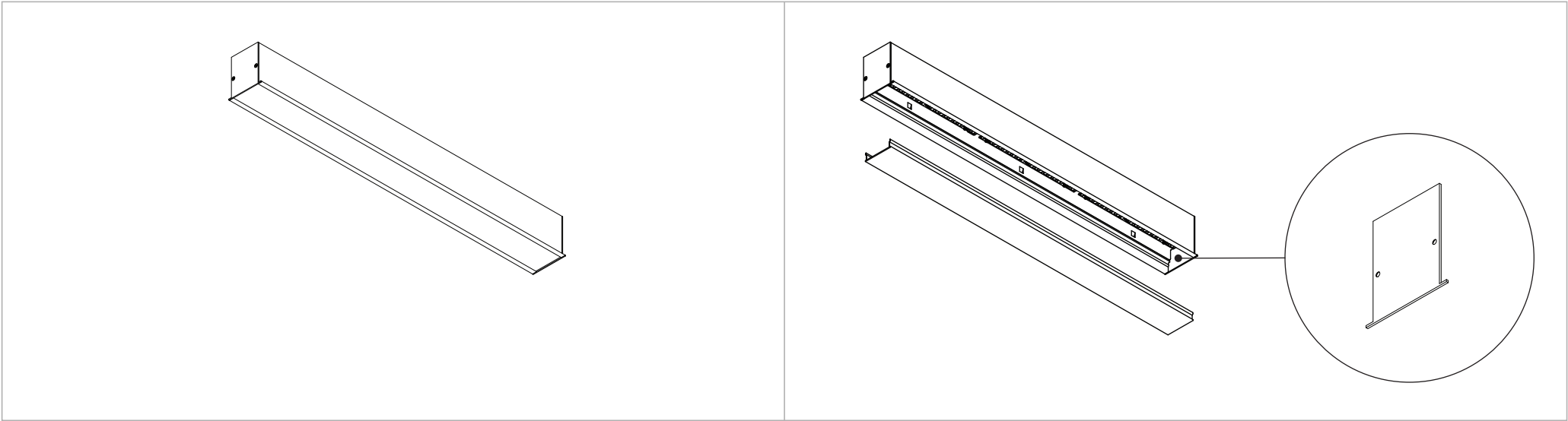
SLD75 flange endplate incl. inner flange

93552182_93552881_93552982



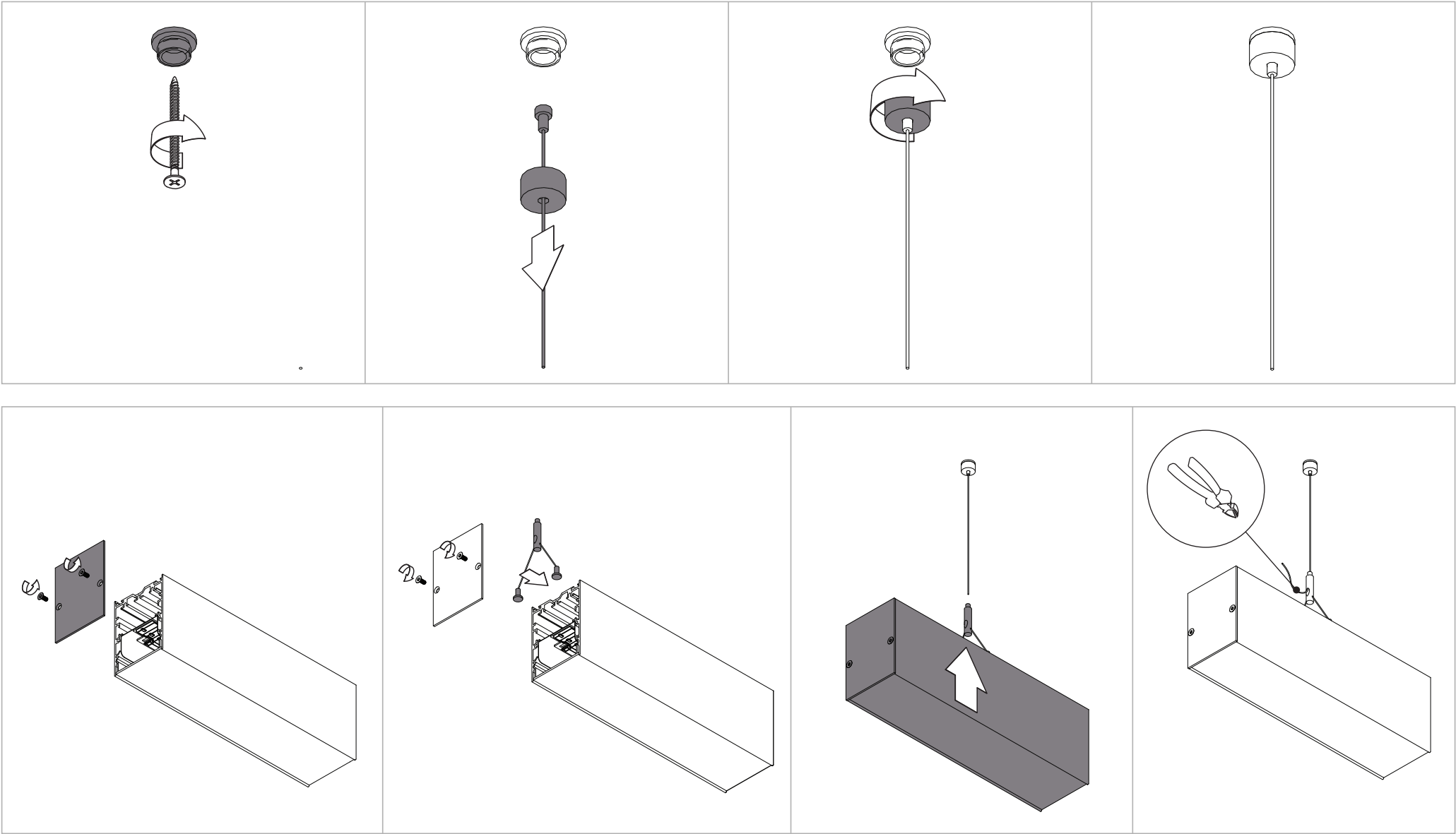
SLD75 flange endplate excl. inner flange

93552184_93552883_93552983



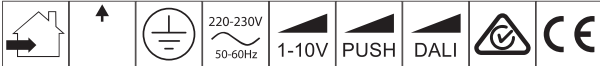
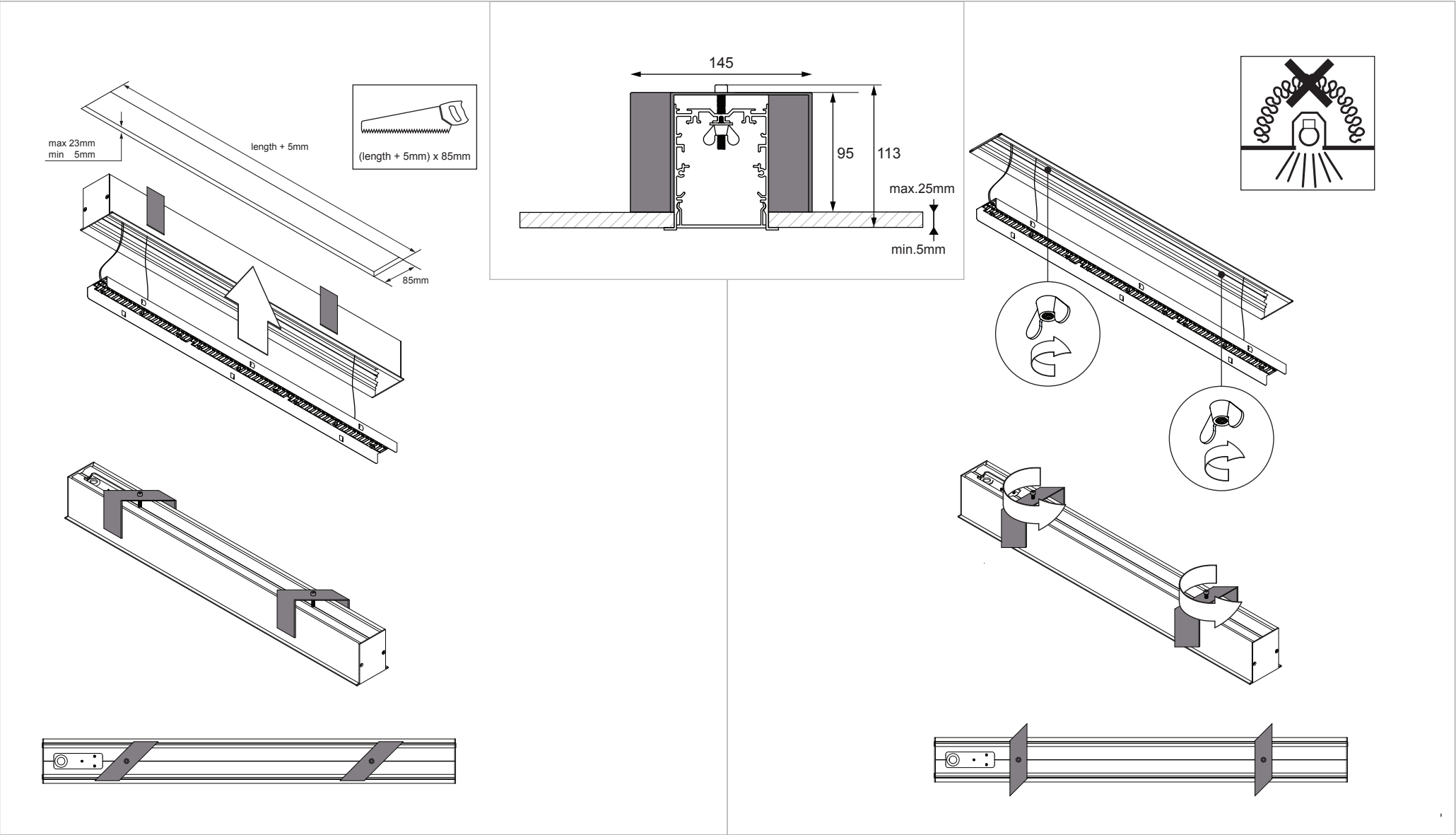
SLD75 twin suspension

93550145_93550845_93550945



SLD75 suspension bracket

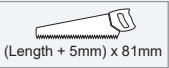
93550999



SLD75 recessed bracket trimless

93550997

Cut-out size



(Length + 5mm) x 81mm

LENGTH
PROFILE LENGTH + 5mm


WIDTH
MINIMUM 54mm
MAXIMUM 56mm

MINIMUM 7mm
MAXIMUM 21mm


PROFILE LENGTH

see profile drawing for distance

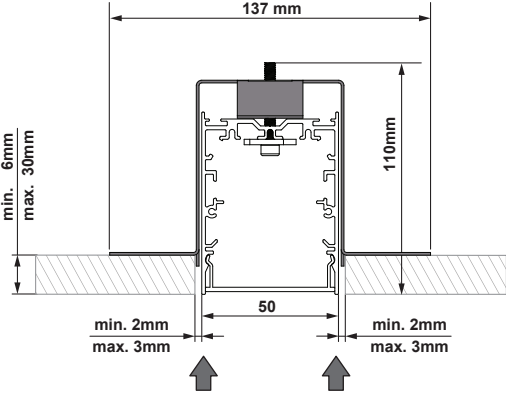
SCREWS NOT INCLUDED



Use FLEX filler



Dimensions.



137 mm

110 mm


50

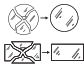
min. 6mm max. 30mm

min. 2mm max. 3mm


min. 2mm max. 3mm

Use FLEX filler






Replace protective shield when broken. The luminaire shall only be used complete with its protective shield.
On site conditions (e.g. heat, humidity, ...) can lead to expansion of the diffuser. Therefore onsite shortening of the diffuser can be required.





LIGHT SOURCE - DO NOT TOUCH LED
Touching the LED can result in permanent damage of the light source. The light source and/or driver contained in this luminaire shall only be replaced by the manufacturer or his service agent or a similar qualified person.



PREVENTING ELECTROSTATIC DAMAGE
A discharge of static electricity may damage sensitive components. Therefore do not touch the LED nor the stripped parts of the wires with bare hands. Always be properly insulated by using ESD gloves.







DRIVERS & ACCESSORIES

For latest version of driver matrix and available accessories check www.supermodular.com or connect with your sales contact.



220-230V

50-60Hz



02 - 14/05/2024