

SLD25

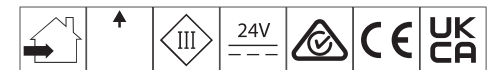
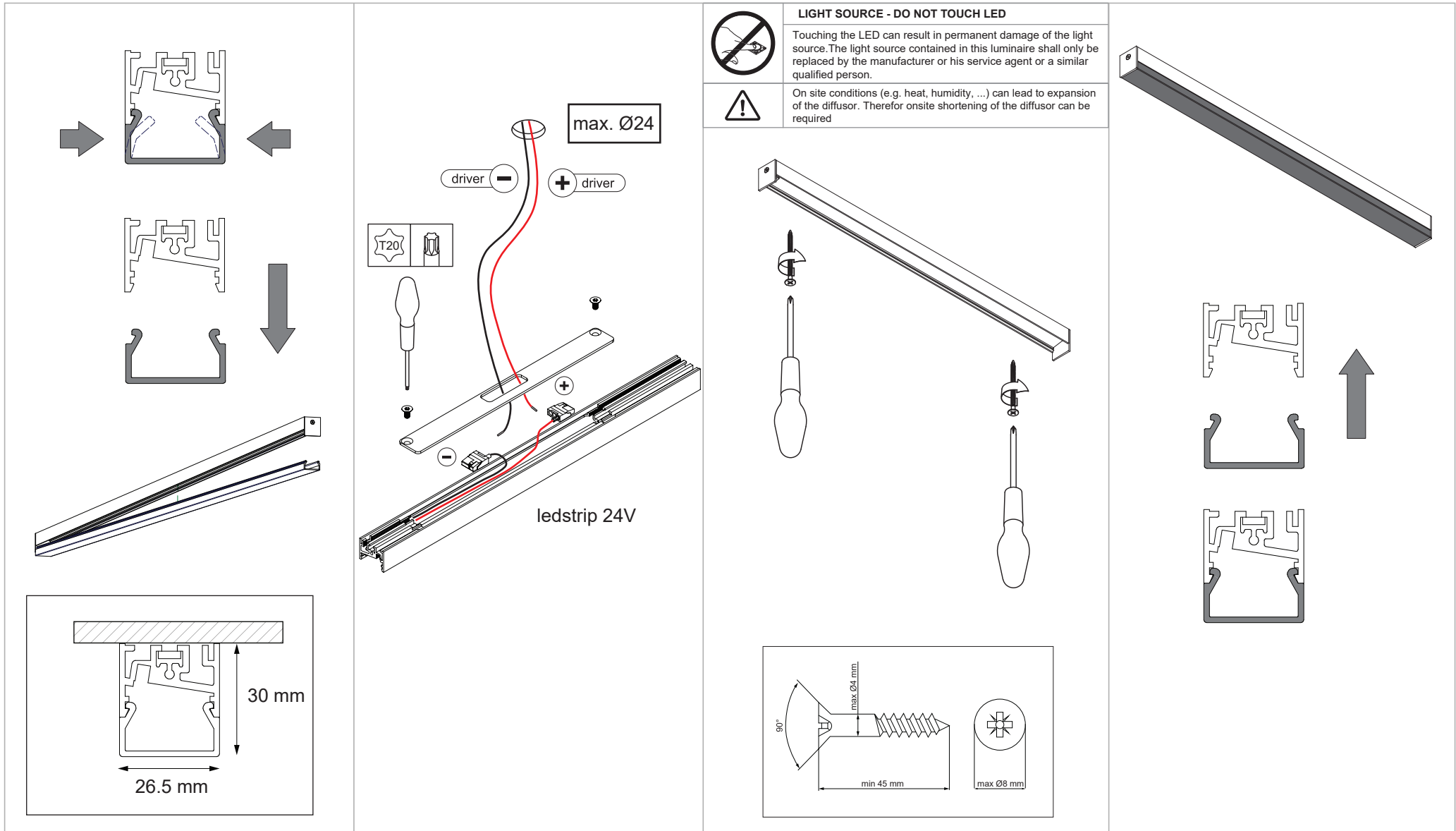
INSTALLATION INSTRUCTIONS



MODULAR
LIGHTING —
INSTRUMENTS

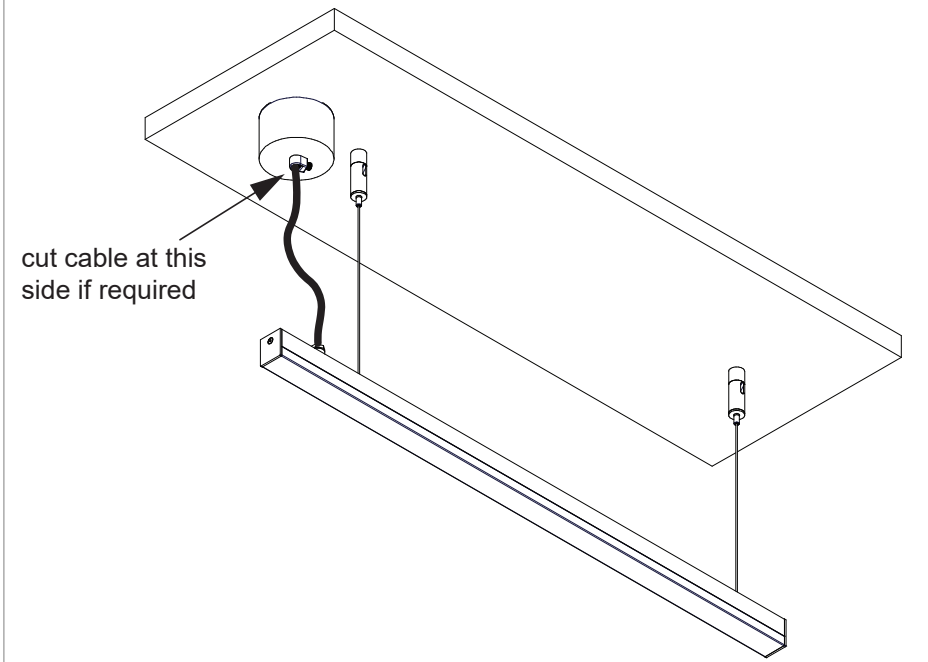
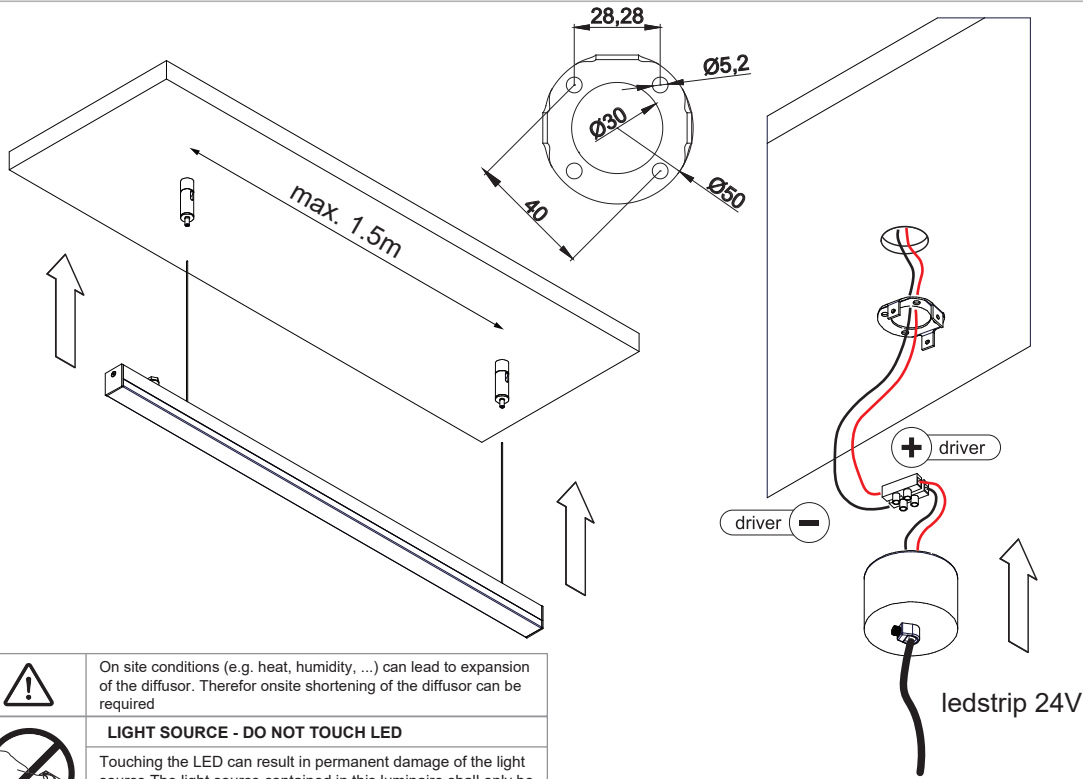
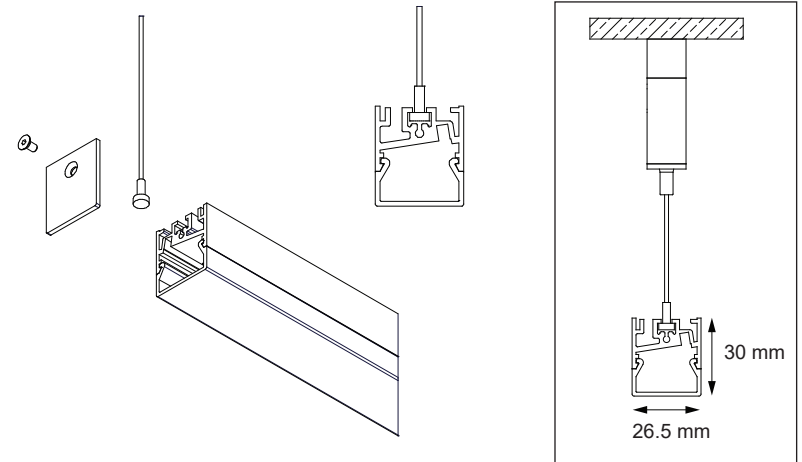
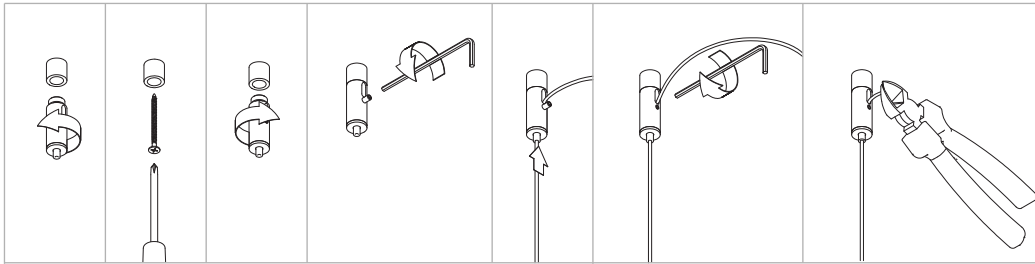
SLD25 POLY OUT Surface Mounted

93440005_93440905_93440906_93440917_93440918_93440932_93440505



SLD25 POLY OUT Suspended Mounted

93440005_93440905_93440906_93440917_93440918_93440932_93440506



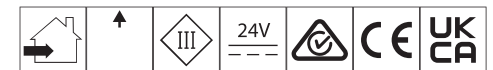
On site conditions (e.g. heat, humidity, ...) can lead to expansion of the diffuser. Therefore onsite shortening of the diffuser can be required



LIGHT SOURCE - DO NOT TOUCH LED

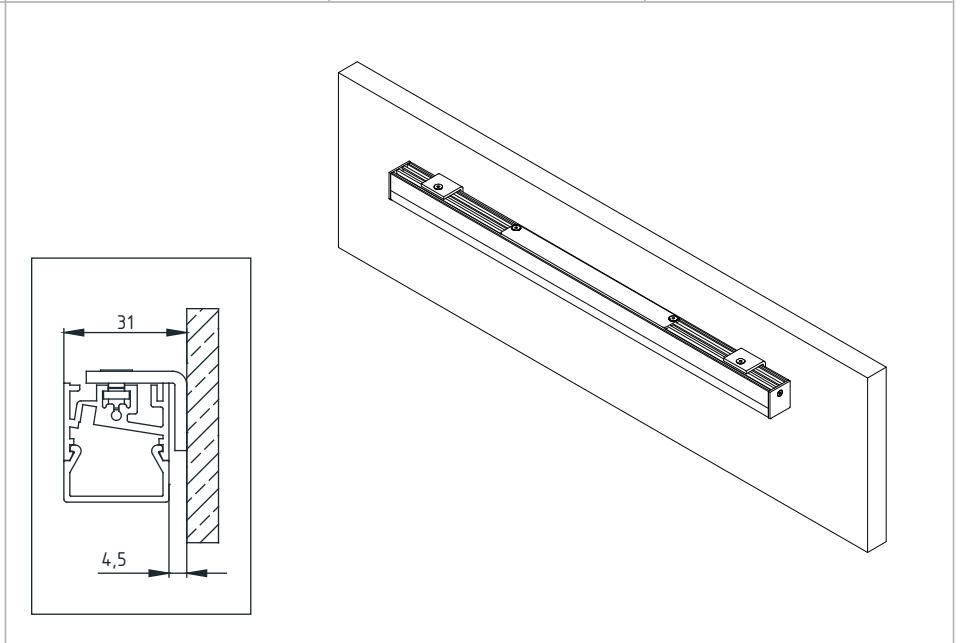
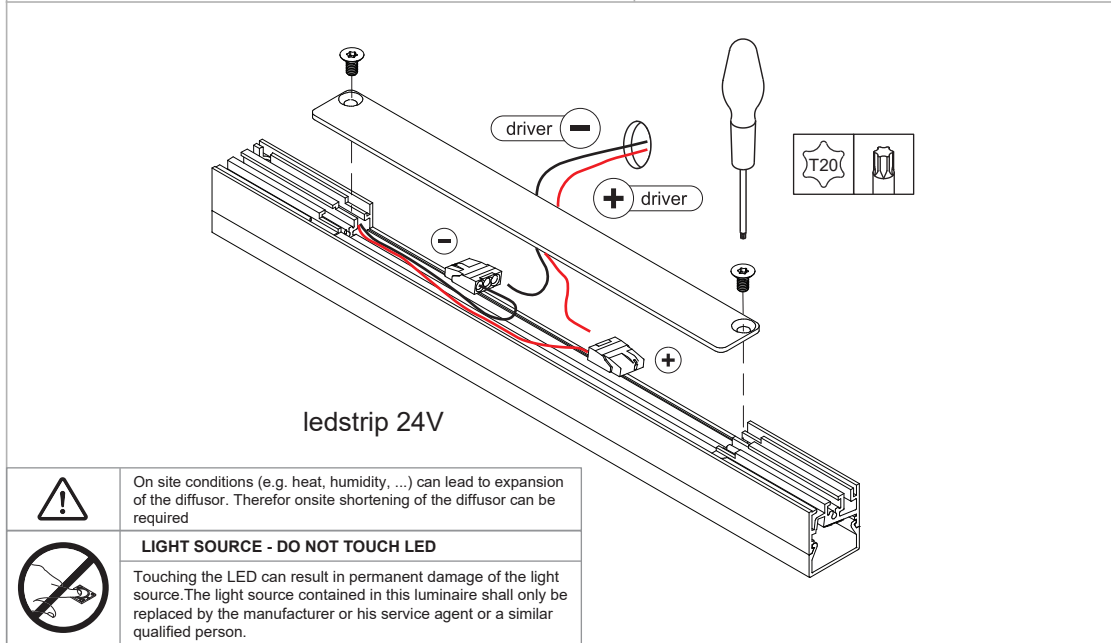
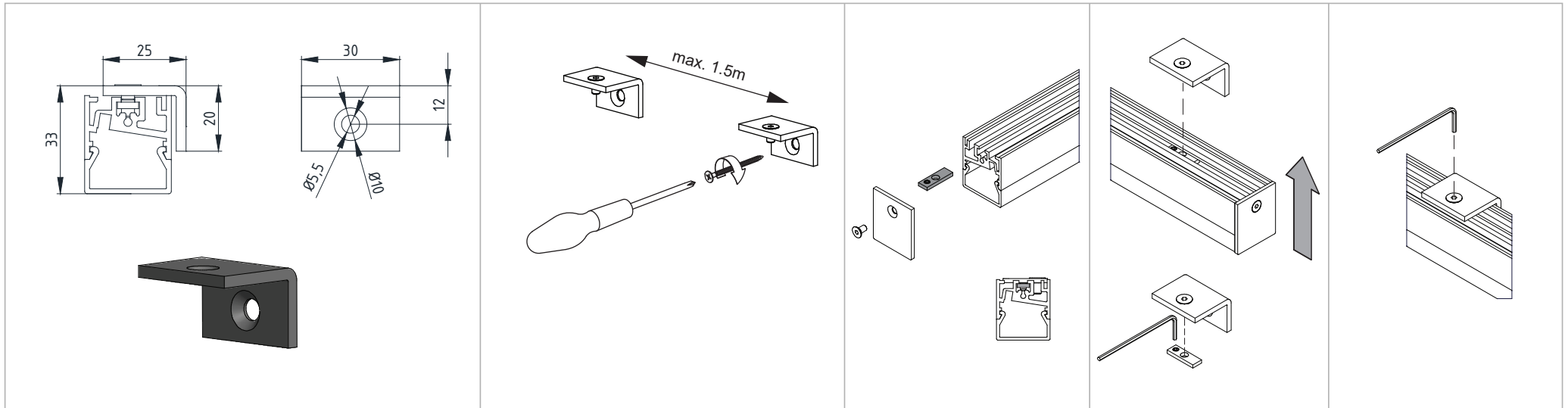
Touching the LED can result in permanent damage of the light source. The light source contained in this luminaire shall only be replaced by the manufacturer or his service agent or a similar qualified person.


ledstrip 24V




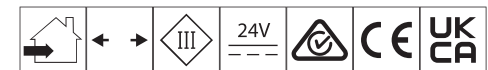
SLD25 POLY OUT Wall Mounted

93440005_93440905_93440906_93440917_93440918_93440932_93440504_93440161



 On site conditions (e.g. heat, humidity, ...) can lead to expansion of the diffuser. Therefore onsite shortening of the diffuser can be required

 **LIGHT SOURCE - DO NOT TOUCH LED**
Touching the LED can result in permanent damage of the light source. The light source contained in this luminaire shall only be replaced by the manufacturer or his service agent or a similar qualified person.



SLD25 POLY OUT 180° connection / 90° connection

93440050 - 93440060

