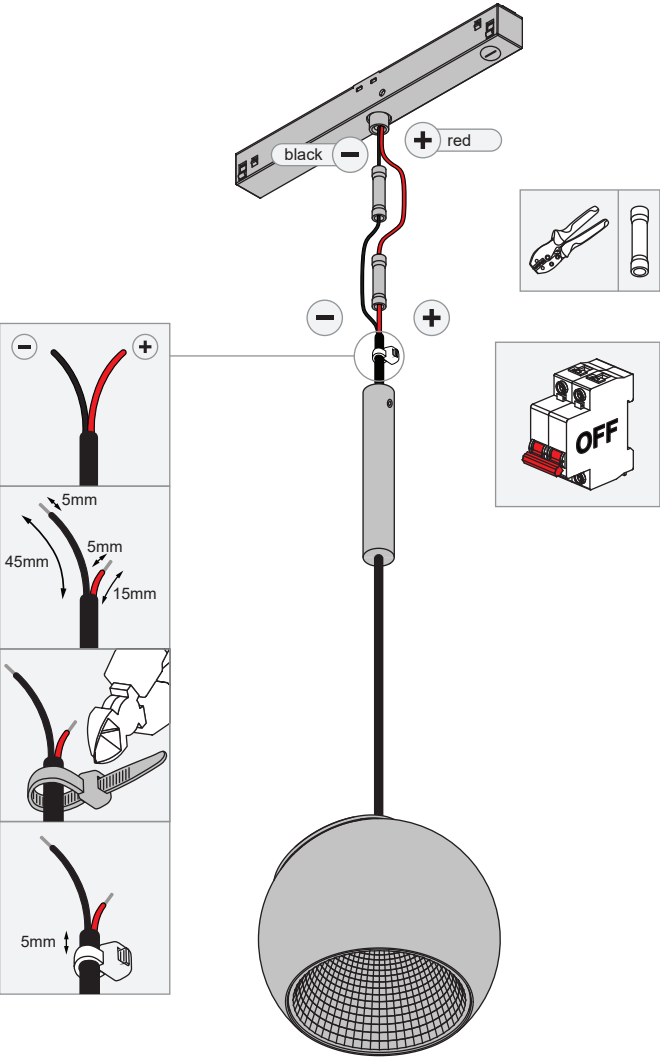


Marbul suspension adjustable track 48V LED GI

134810XX_134811XX_134812XX_134813XX_134814XX_134815XX

1.1 INSTALLATION



LIGHT SOURCE - DO NOT TOUCH LED

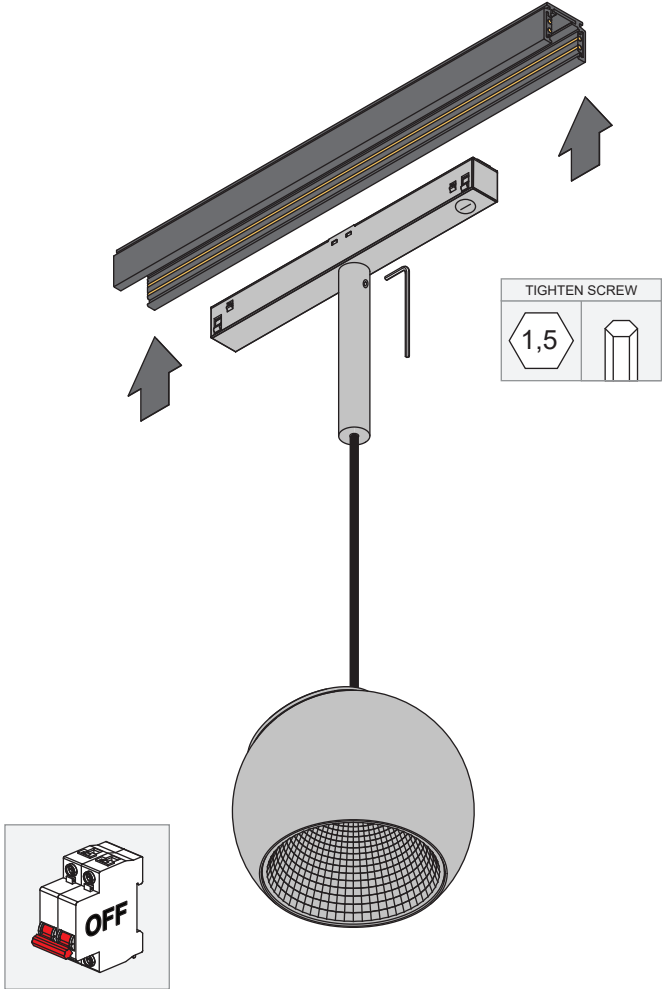
Touching the LED can result in permanent damage of the light source. The light source contained in this luminaire shall only be replaced by the manufacturer or his service agent or a similar qualified person.



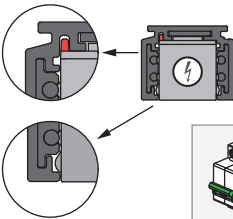
PREVENTING ELECTROSTATIC DAMAGE

A discharge of static electricity may damage sensitive components. Therefore do not touch the LED nor the stripped parts of the wires with bare hands. Always be properly insulated by using ESD gloves.

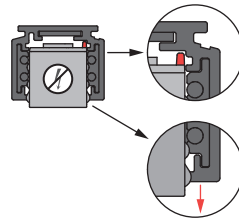
1.2 INSTALLATION



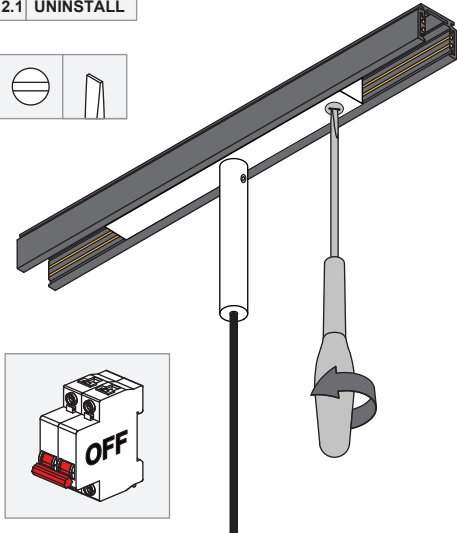
ADAPTER ORIENTATION



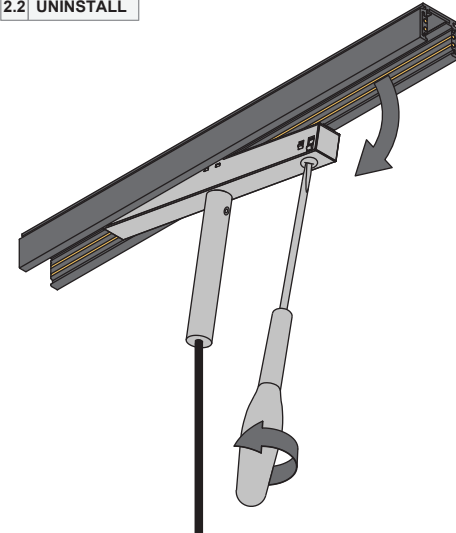
ADAPTER ORIENTATION



2.1 UNINSTALL



2.2 UNINSTALL



2.3 UNINSTALL

