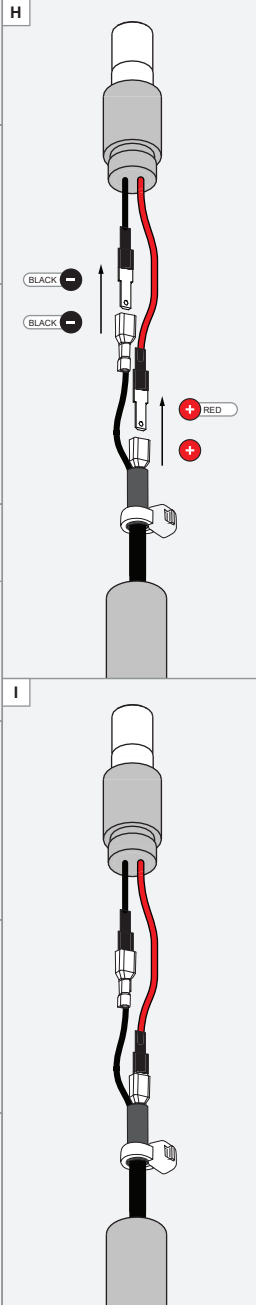
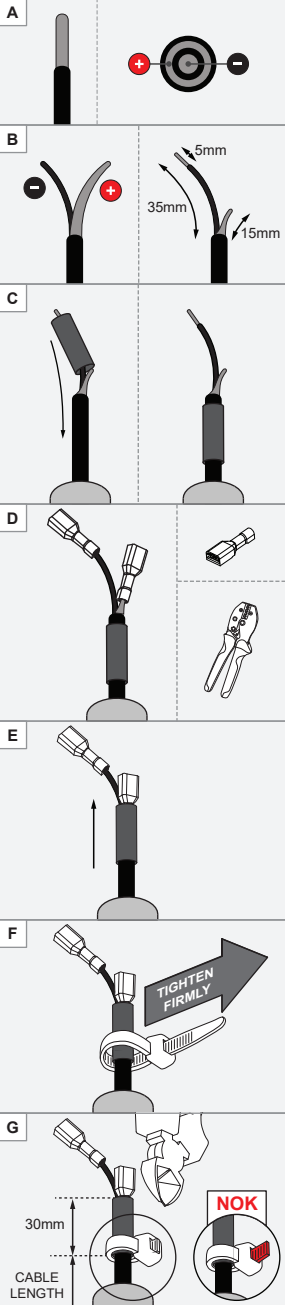
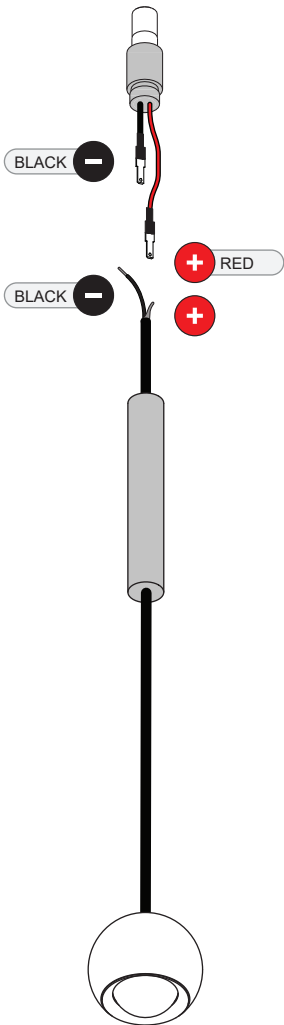


Marbulito suspension jack LED GE

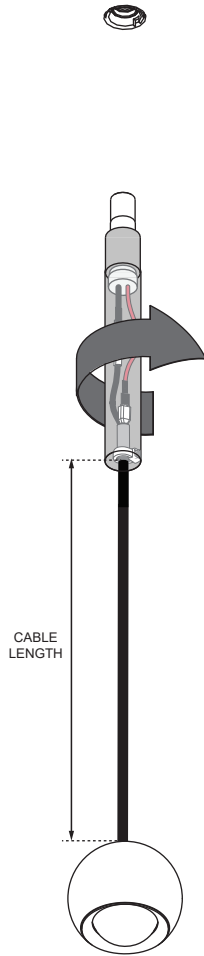
134240XX_134241XX

1 SHORTEN CABLE TO DESIRED LENGTH

"MODUPOINT LED" CONNECTION POINT
NOT INCLUDED

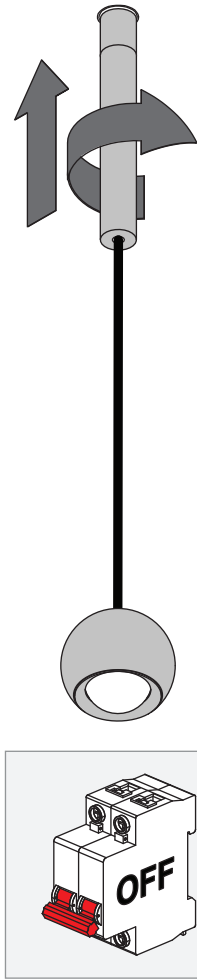


2 SCREW AND CLOSE FIXTURE

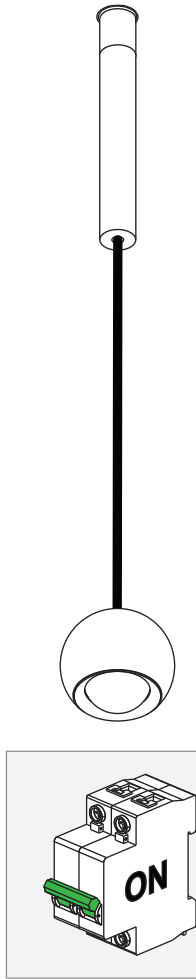


Drive Current (mA)	Forward Voltage		Power (W)
	min (Vf)	max (Vf)	
350	7,5	9,5	3,0
500	7,5	9,5	4,3
For serial connection, respect polarity!			
⊕ RED		⊖ BLACK	

3 PLUG IN "MODUPOINT LED"



4 POWER INSTALLATION



Replace protective shield when broken. The luminaire shall only be used complete with its protective shield.
Reference number: 1014379

DRIVERS & ACCESSORIES

For latest version of driver matrix and available accessories check www.supermodular.com or connect with your sales contact.

