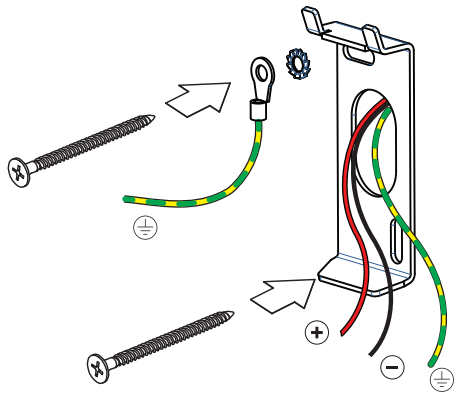
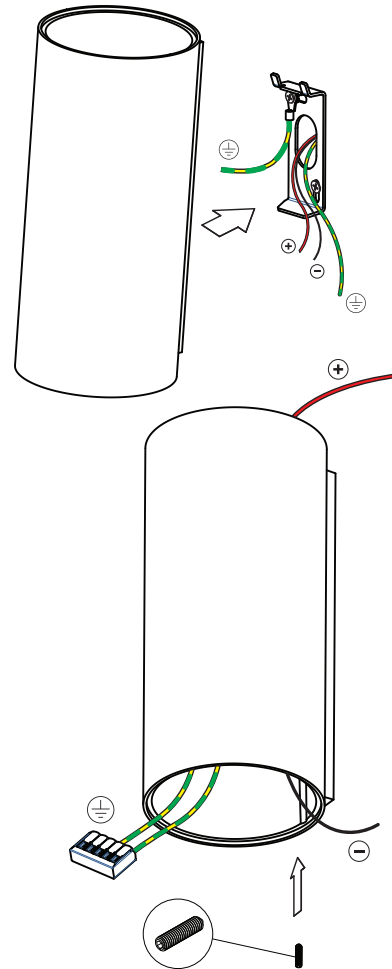
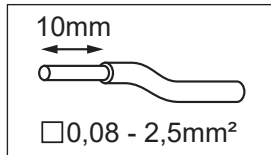
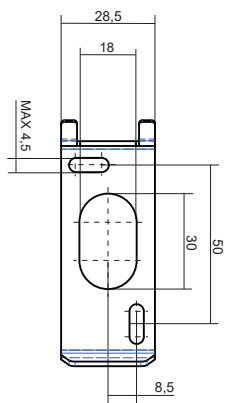


SmartST XL Wall 82 2xLED GE

128467XX



(SCREWS NOT INCLUDED)

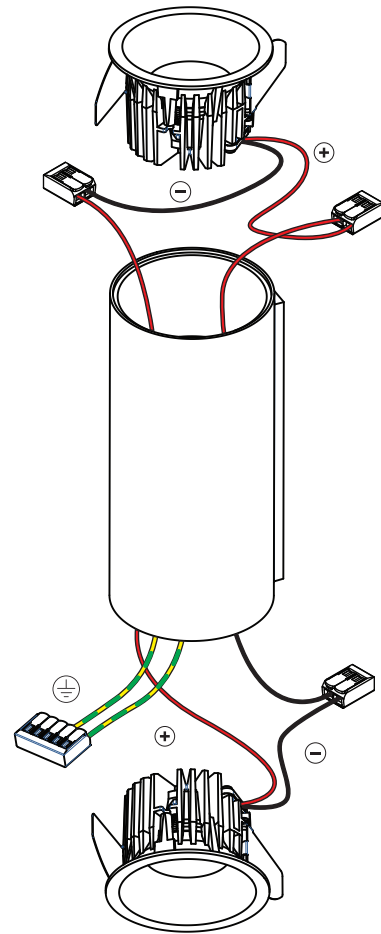


Smart 82 (IP) LED GE:
Smart 82 adjustable LED GE:

Drive Current (mA)	Forward Voltage		Power (W)
	min (Vf)	max (Vf)	
350	16,5	19,2	6,2
500	17,1	19,8	9,2

For serial connection, respect polarity!

⊕ RED	⊖ BLACK
-------	---------

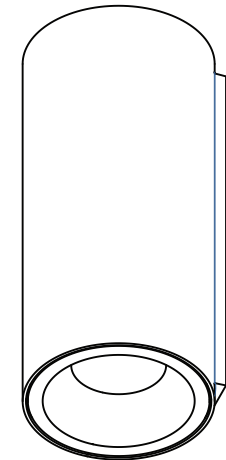


Smart 82 (IP) warmdim LED GE:
Smart 82 adjustable warmdim LED GE:

WARM DIM			
Drive Current (mA)	Forward Voltage		Power (W)
	min (Vf)	max (Vf)	
350	15,5	18,5	6

For serial connection, respect polarity!

⊕ RED	⊖ BLACK
-------	---------



INSTALL UNINSTALL



Always use a Smart IP rated fixture in the upright position

LIGHT SOURCE - DO NOT TOUCH LED
Touching the LED can result in permanent damage of the light source. The light source contained in this luminaire shall only be replaced by the manufacturer or his service agent or a similar qualified person.

PREVENTING ELECTROSTATIC DAMAGE
A discharge of static electricity may damage sensitive components. Therefore do not touch the LED nor the stripped parts of the wires with bare hands. Always be properly insulated by using ESD gloves.

CAN BE USED WITH :

- Smart 82 (IP*) LED GE
- Smart 82 adjustable LED GE
- Smart 82 (IP*) warmdim LED GE
- Smart 82 adjustable warmdim LED GE
- Smart 82 GU10 GE for tube/box

*in combination with Smart ST Wall = IP20

