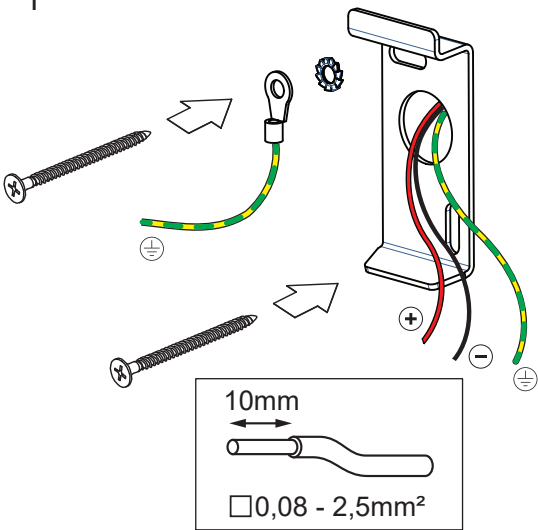


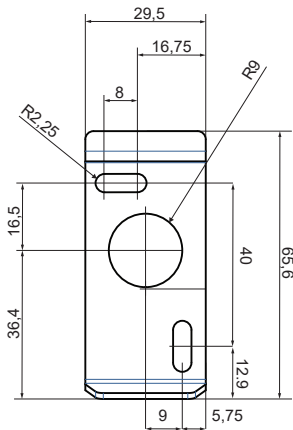
SmartST S Wall 82 1xLED GE

128466XX

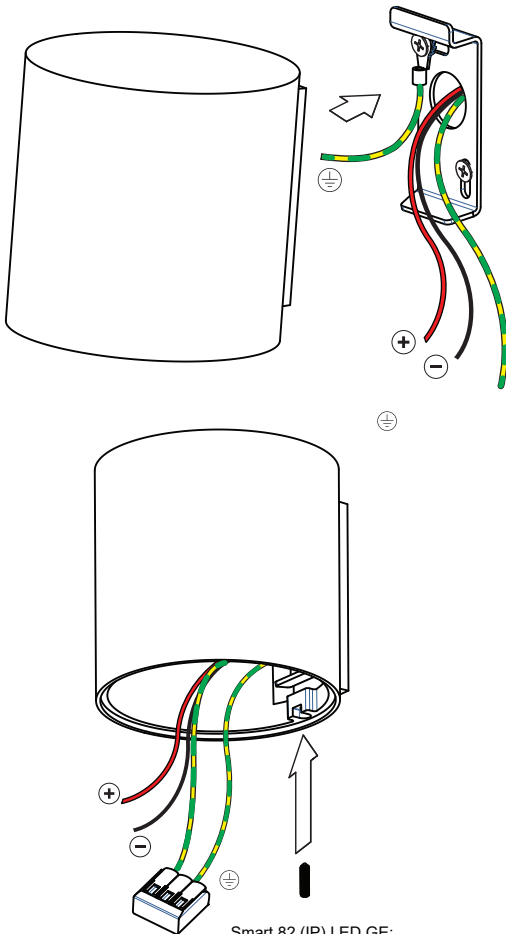
1



(SCREWS NOT INCLUDED)



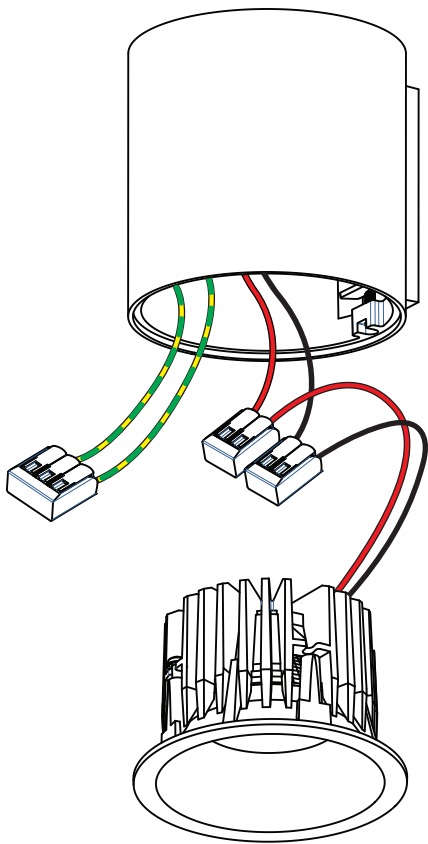
2



Smart 82 (IP) LED GE:  
Smart 82 adjustable LED GE:

Drive Current (mA)	Forward Voltage		Power (W)
	min (Vf)	max (Vf)	
350	16,5	19,2	6,2
500	17,1	19,8	9,2
For serial connection, respect polarity!			
⊕ RED		⊖ BLACK	

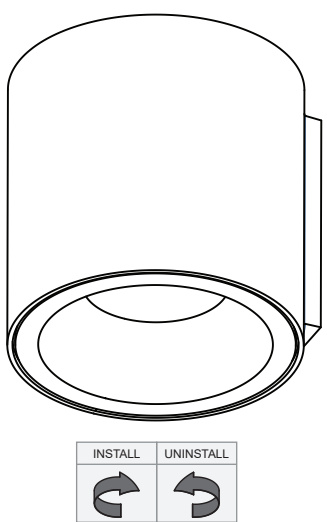
3



Smart 82 (IP) warmdim LED GE:  
Smart 82 adjustable warmdim LED GE:

WARM DIM			
Drive Current (mA)	Forward Voltage		Power (W)
	min (Vf)	max (Vf)	
350	15,5	18,5	6
For serial connection, respect polarity!			
⊕ RED		⊖ BLACK	

4



Always use a Smart IP rated fixture  
in the upright position



PREVENTING ELECTROSTATIC DAMAGE

A discharge of static electricity may  
damage sensitive components.  
Therefore do not touch the LED nor the  
stripped parts of the wires with bare



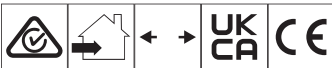
LIGHT SOURCE - DO NOT TOUCH LED

Touching the LED can result in permanent damage of  
the light source. The light source contained in this  
luminaire shall only be replaced by the manufacturer or  
his service agent or a similar qualified person.

CAN BE USED WITH :

- Smart 82 (IP\*) LED GE
- Smart 82 adjustable LED GE
- Smart 82 (IP\*) warmdim LED GE
- Smart 82 adjustable warmdim LED GE
- Smart 82 GU10 GE for tube/box

\*in combination with Smart ST Wall = IP20



05- 21/12/2022