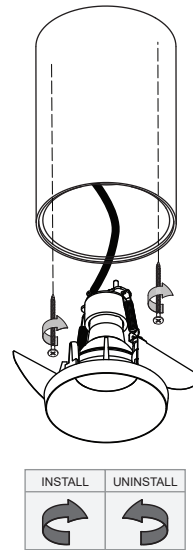
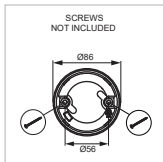
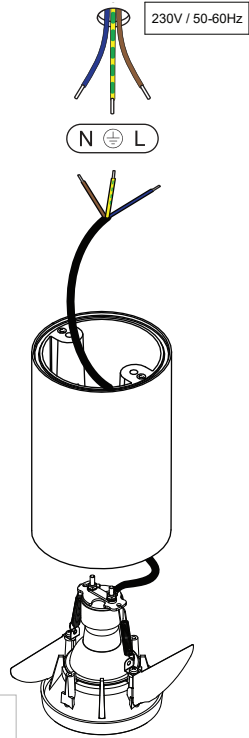


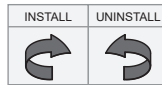
Smart surface tubed 82 large LED GE

128450XX

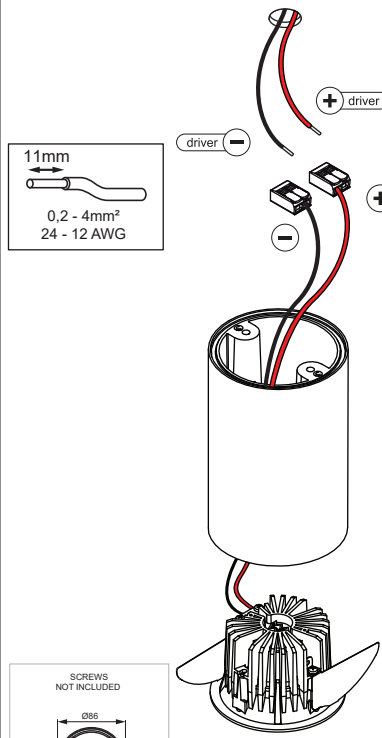
Combined with smart 82 LED retrofit **GU10**
(LED-fixture on visualisation not included)



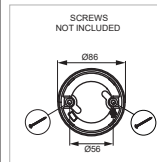
IP-rating
even combined
with included O-ring
fixture remains IP20



Combined with smart 82 LED **GE**
(LED-fixture on visualisation not included)

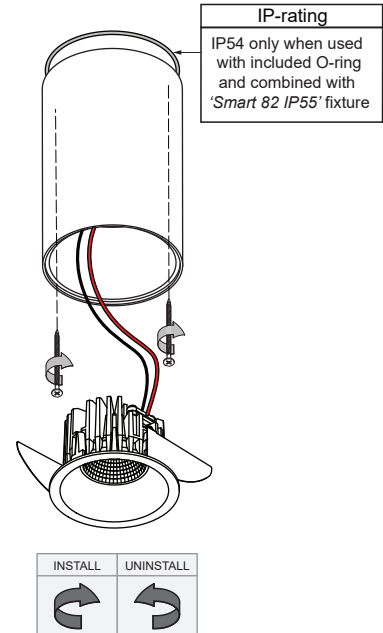


11mm
0,2 - 4mm²
24 - 12 AWG

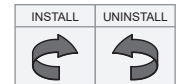


For serial connection, respect polarity!
⊕ RED ⊖ BLACK

CAN BE USED WITH		ATTENTION	
		Set at these MAX drive currents:	
Smart 82 (IP*) LED GE	500 mA		
Smart 82 adjustable LED GE	500 mA		
Smart 82 (IP*) warmdim LED GE	350 mA		
Smart 82 adjustable warmdim LED GE	350 mA		
Smart 82 GU10 for tube			



IP-rating
IP54 only when used
with included O-ring
and combined with
'Smart 82 IP55' fixture



LIGHT SOURCE - DO NOT TOUCH LED

Touching the LED can result in permanent damage of the light source. The light source contained in this luminaire shall only be replaced by the manufacturer or his service agent or a similar qualified person.

PREVENTING ELECTROSTATIC DAMAGE

A discharge of static electricity may damage sensitive components. Therefore do not touch the LED nor the stripped parts of the wires with bare hands. Always be properly insulated by using ESD gloves.

DRIVERS & ACCESSORIES

For latest version of driver matrix and available accessories check www.supermodular.com or connect with your sales contact.

