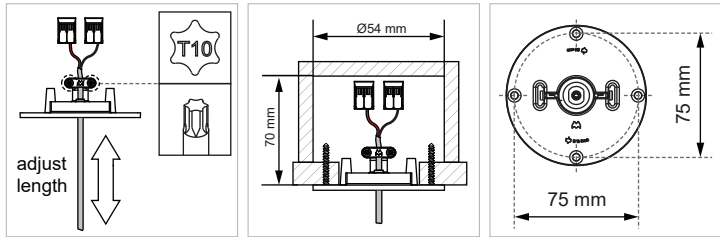
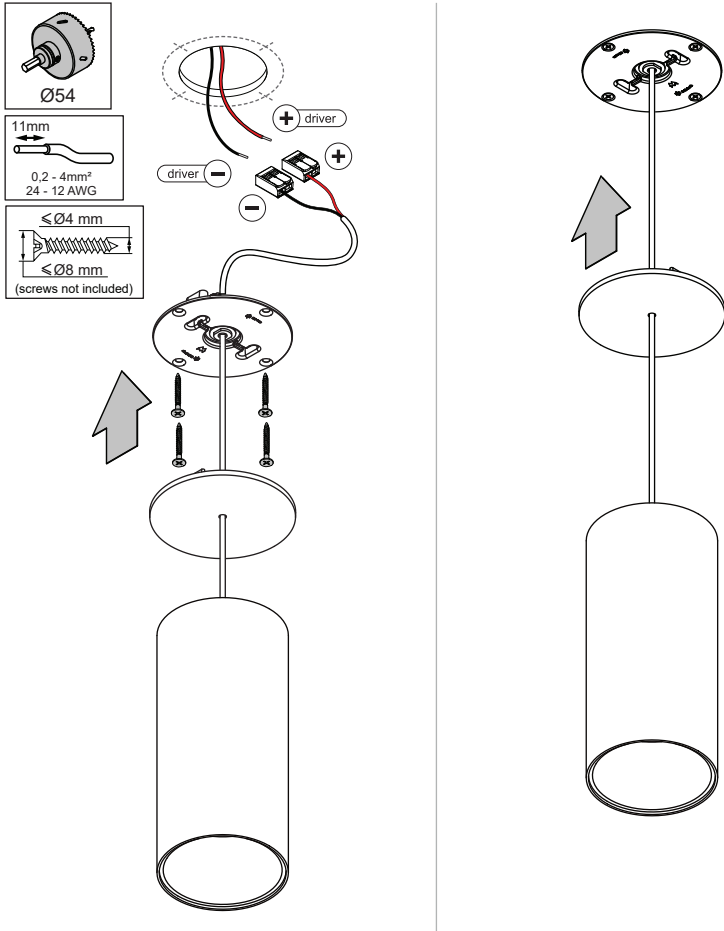
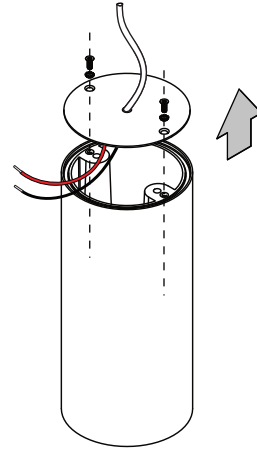


Smart Tube Suspension 82 XL GE

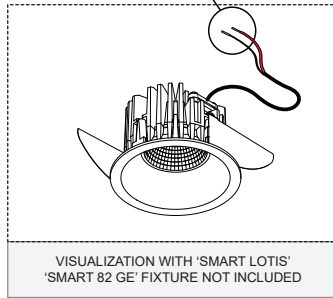
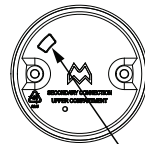
128429XX



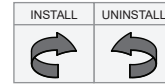
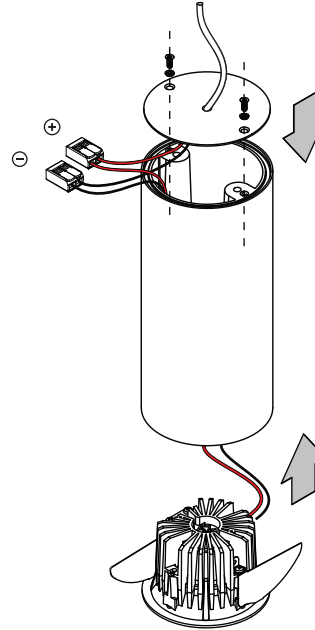
Open 'SMART TUBED' cover



Disconnect fixture connectors and pull wires through opening



Connect fixture and close tube cover (re-use included toothed washers & screws)



For serial connection, respect polarity!

⊕ RED ⊖ BLACK

CAN BE USED WITH

	ATTENTION	
	Set at these MAX drive currents:	
Smart 82 LED GE	500 mA	
Smart 82 adjustable LED GE	500 mA	
Smart 82 warmdim LED GE	350 mA	
Smart 82 adjustable warmdim LED GE	350 mA	



LIGHT SOURCE - DO NOT TOUCH LED

Touching the LED can result in permanent damage of the light source. The light source contained in this luminaire shall only be replaced by the manufacturer or his service agent or a similar qualified person.



PREVENTING ELECTROSTATIC DAMAGE

A discharge of static electricity may damage sensitive components. Therefore do not touch the LED nor the stripped parts of the wires with bare hands. Always be properly insulated by using ESD gloves.

DRIVERS & ACCESSORIES

For latest version of driver matrix and available accessories check www.supermodular.com or connect with your sales contact.

