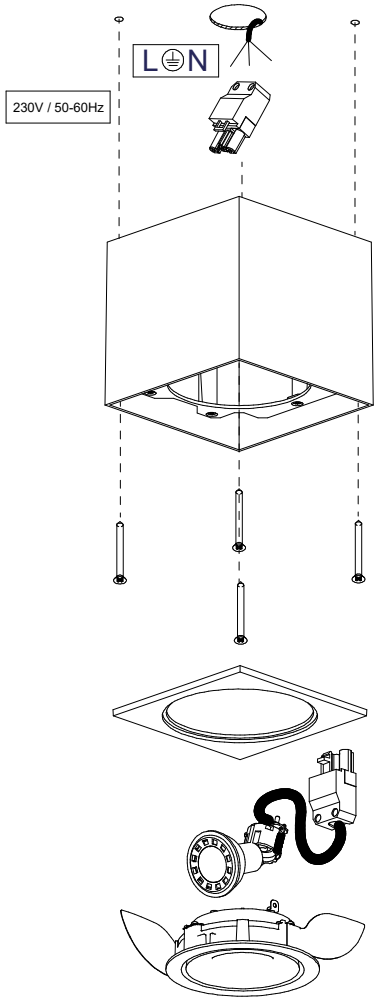


Smart Surface Box 115 GE for 1L

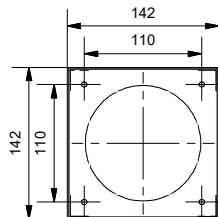
128020XX

1 for Smart Adj Ø115 ES50

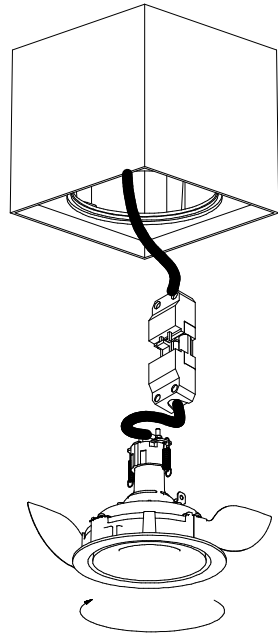


CAN BE USED WITH:
Smart 115 adjustable ES50

MUST BE USED WITH:
Smart Mask 115 1x

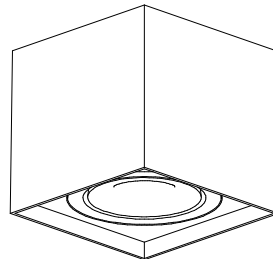


2

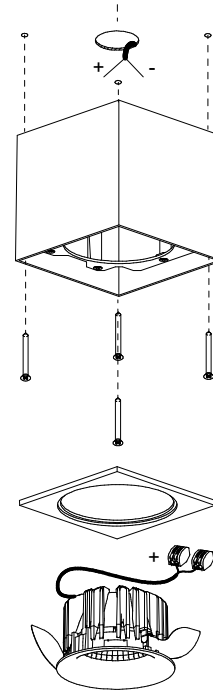


install : Twist clockwise
uninstall: Twist counterclockwise

3



1



Smart 115 (IP) LED GE:

Drive Current (mA)	Forward Voltage		Power (W)
	min (Vf)	max (Vf)	
350	29,1	33,7	11,0
500	29,9	34,7	16,2
For serial connection, respect polarity!			
⊕ RED		⊖ BLACK	

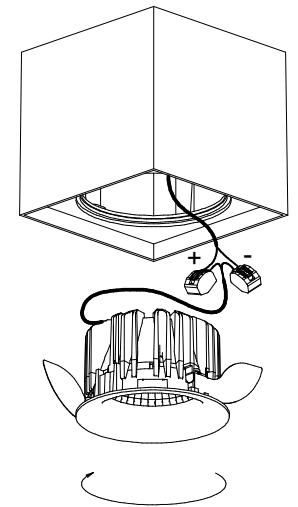
Smart 115 adjustable LED GE:

Drive Current (mA)	Forward Voltage		Power (W)
	min (Vf)	max (Vf)	
350	16,5	19,2	6,2
500	17,1	19,8	9,2
For serial connection, respect polarity!			
⊕ RED		⊖ BLACK	

Smart 115 adjustable warmdim LED GE:

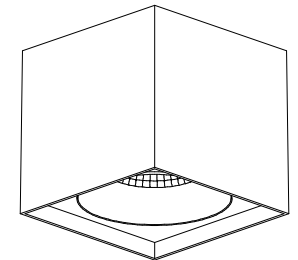
WARM DIM			
Drive Current (mA)	Forward Voltage		Power (W)
	min (Vf)	max (Vf)	
350	15,5	18,5	6
For serial connection, respect polarity!			
⊕ RED		⊖ BLACK	

2



install : Twist clockwise
uninstall: Twist counterclockwise

3



CAN BE USED WITH:
Smart 115 (IP*) LED GE
Smart 115 adjustable LED GE
Smart 115 adjustable warmdim LED GE

MUST BE USED WITH:
Smart Mask 115 1x

*in combination with Surface Box = IP20