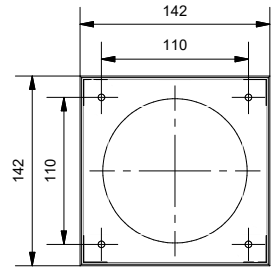


Smart Surface Box 115 GI for 1L

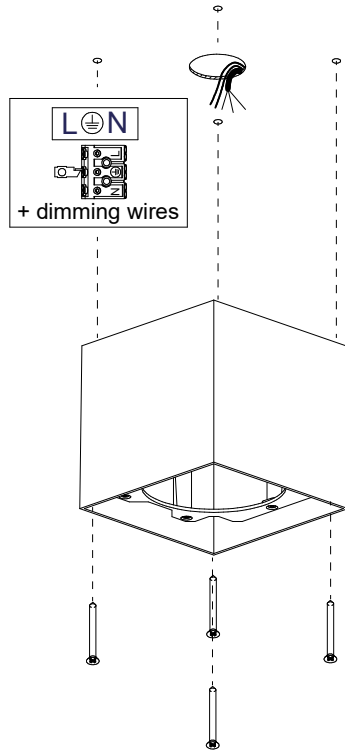
128000XX_128001XX_128002XX

1

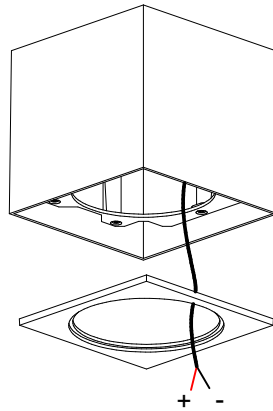


2

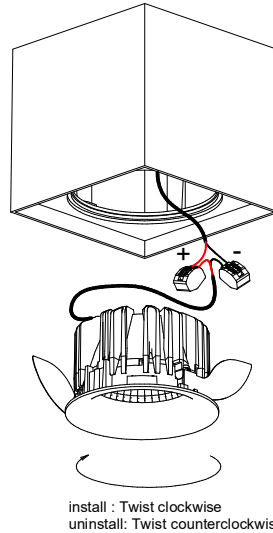
500mA DRIVER INCLUDED



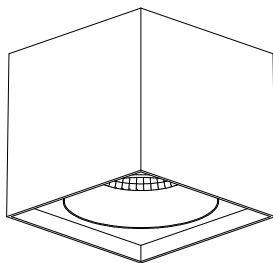
3



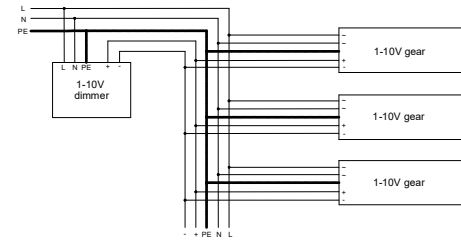
4



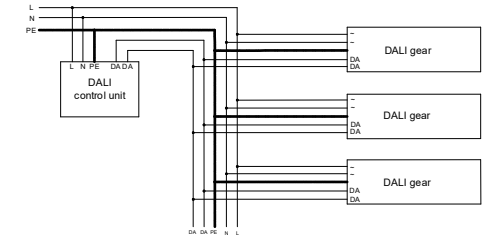
5



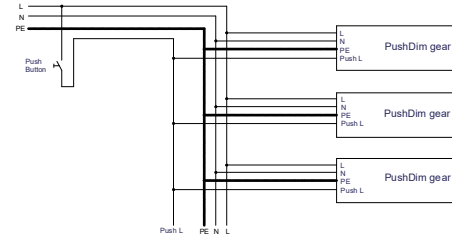
Sample 1-10V wiring diagram:



Sample DALI wiring diagram:



Sample PushDim wiring diagram:



SMART 115 GE and MASK not included

CAN BE USED WITH:
Smart 115 (IP*) LED GE
Smart 115 adjustable LED GE

MUST BE USED WITH:
Smart Mask 115 1x

CAN NOT BE USED WITH:
Smart 115 adjustable warmdim LED GE

*in combination with Smart Surface Box = IP20

