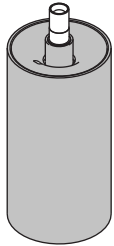


Minude Jack Adjustable 45 1x LED Medium DE

114630XX_114631XX

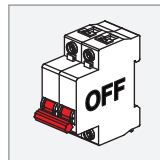
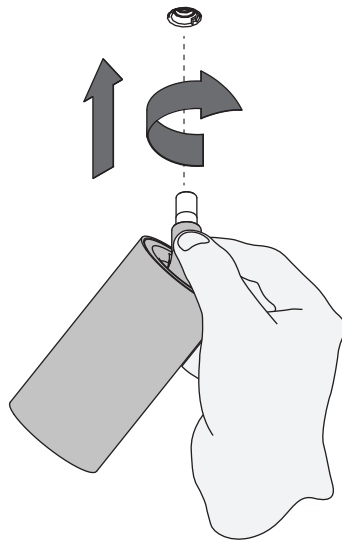
1.1 INSTALLATION: COMPONENTS



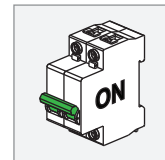
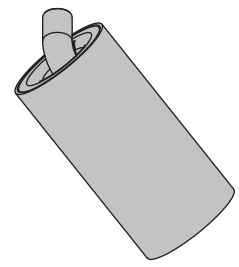
| ELECTRICAL SPECS LED-FIXTURE | | | |
|------------------------------|-----------------|----------|-----------|
| Drive Current (mA) | Forward Voltage | | Power (W) |
| | min (Vf) | max (Vf) | |
| 350 | 14,8 | 18,0 | 5,7 |
| 500 | 15,2 | 18,6 | 8,5 |
| + RED | | - BLACK | |

For serial connection, respect polarity!
Not suited for connection to mains voltage.
Combine with a Modular LED-driver.

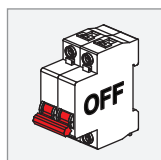
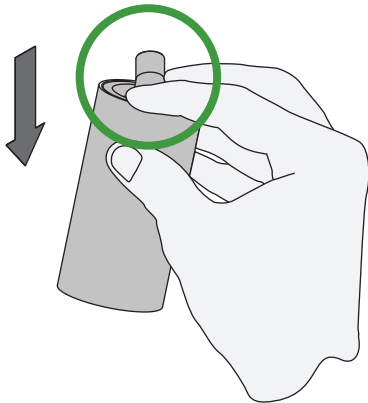
1.2 INSTALLATION: PLUG IN "MODUPOINT LED"



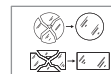
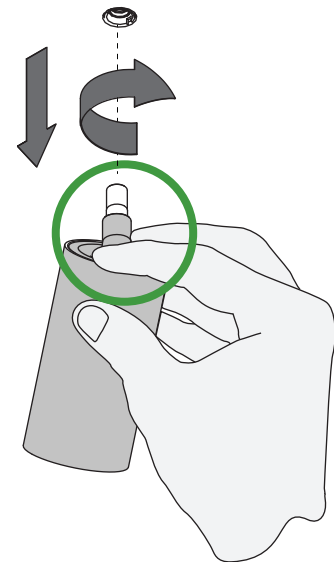
1.3 INSTALLATION: POWER ON



2.1 UNINSTALL



2.2 UNINSTALL



Replace protective shield when broken. The luminaire shall only be used complete with its protective shield.
Reference number: 1014378



LIGHT SOURCE - DO NOT TOUCH LED

Touching the LED can result in permanent damage of the light source. The light source and/or driver contained in this luminaire shall only be replaced by the manufacturer or his service agent or a similar qualified person.

DRIVERS & ACCESSORIES

For latest version of driver matrix and available accessories check www.supermodular.com or connect with your sales contact.