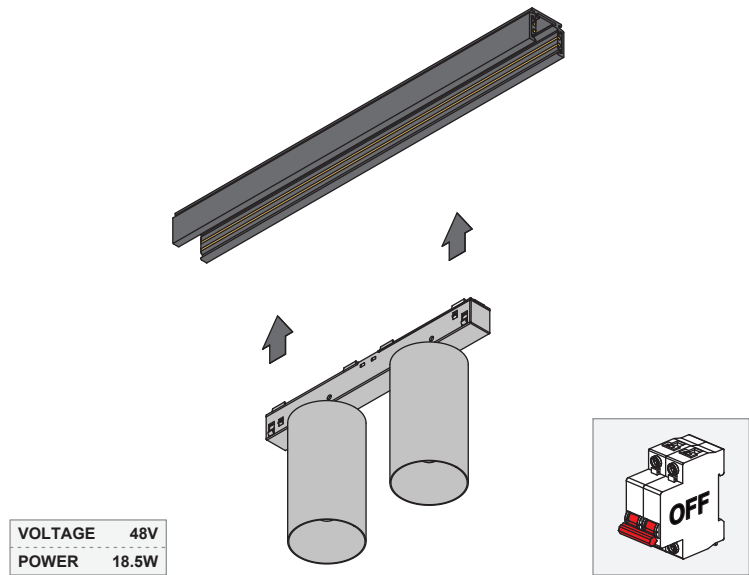


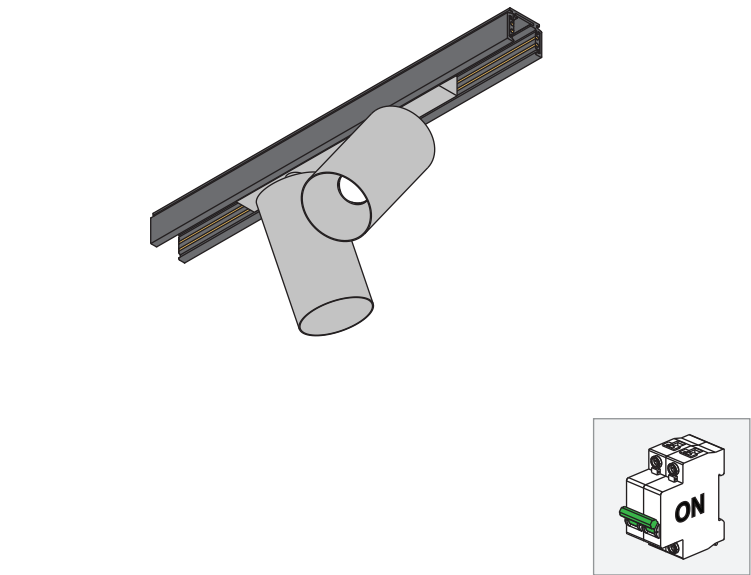
Minude Track 48V Adjustable 45 2x LED Medium DI

114604XX 114605XX 114606XX 114607XX

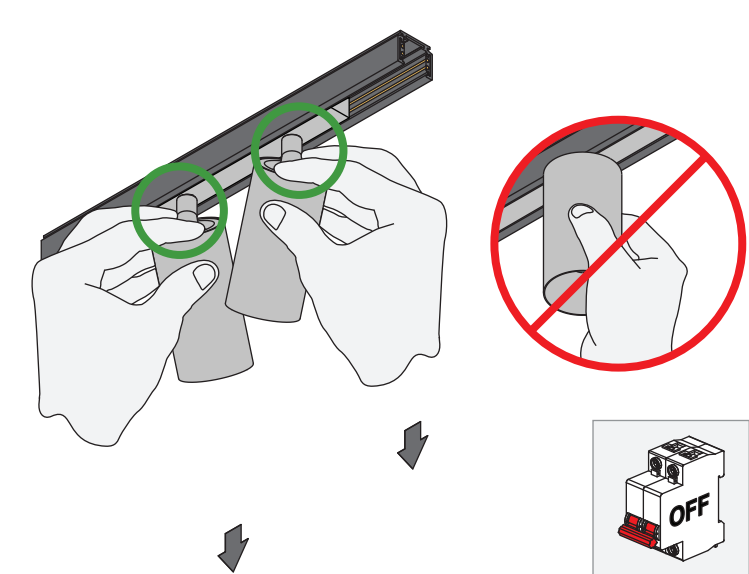
1.1 INSTALLATION



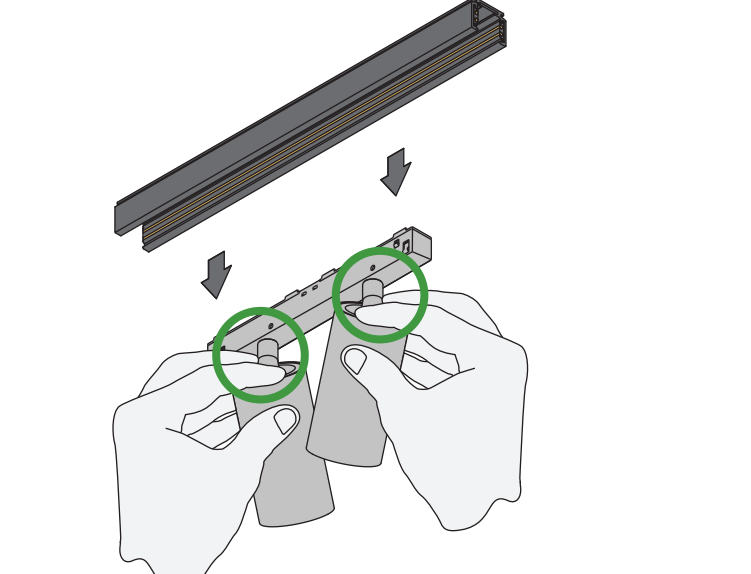
1.2 INSTALLATION



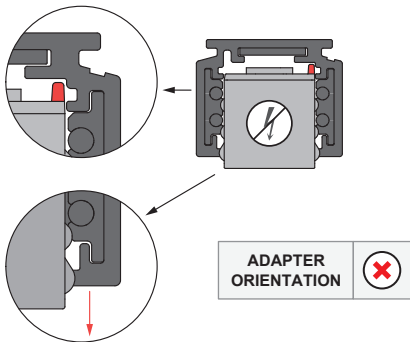
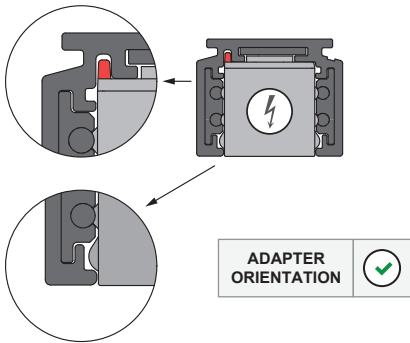
2.1 UNINSTALL



2.2 UNINSTALL



ELECTRICAL



Replace protective shield when broken. The luminaire shall only be used complete with its protective shield.
Reference number: 1014378



LIGHT SOURCE - DO NOT TOUCH LED

Touching the LED can result in permanent damage of the light source. The light source and/or driver contained in this luminaire shall only be replaced by the manufacturer or his service agent or a similar qualified person.



PREVENTING ELECTROSTATIC DAMAGE

A discharge of static electricity may damage sensitive components. Therefore do not touch the LED nor the stripped parts of the wires with bare hands. Always be properly insulated by using ESD gloves.

DRIVERS & ACCESSORIES

For latest version of driver matrix and available accessories check www.supermodular.com or connect with your sales contact.