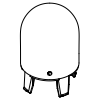


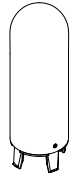
Placebo down LED

126223XX_126210XX_126211XX_126212XX_126213XX_126214XX_126215XX_126221XX_126216XX_126225XX_135401XX_135403XX_135405XX_135407XX_135409XX_135411XX

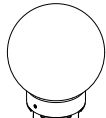
PLACEBO GLASS



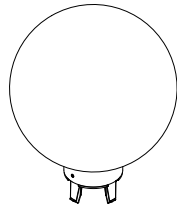
Ref nr. 12624038



Ref nr. 12624238



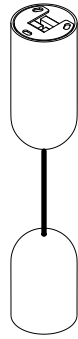
Ref nr. 12626038



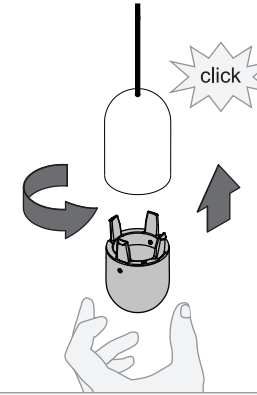
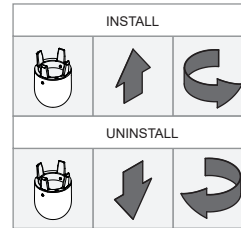
Ref nr. 12626238

PLACEBO GI

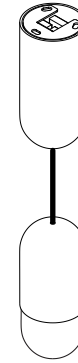
1



2



3

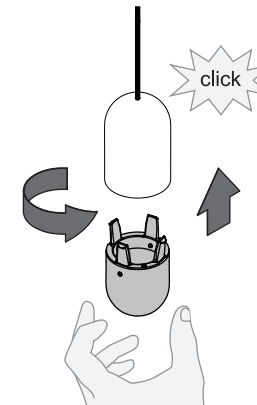
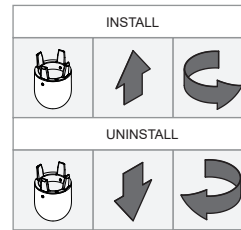


PLACEBO GE

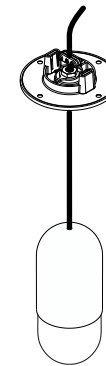
1



2

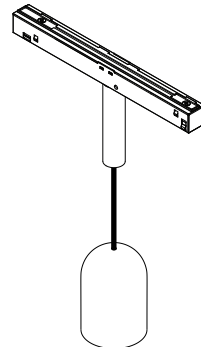


3

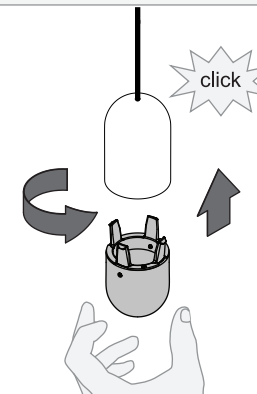
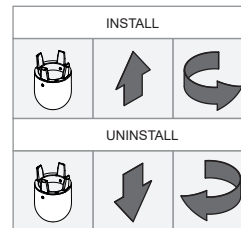


PLACEBO TRACK 48V

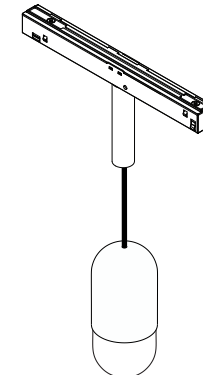
1



2



3



Replace protective shield when broken. The luminaire shall only be used complete with its protective shield.
Reference number: SEE ABOVE



LIGHT SOURCE - DO NOT TOUCH LED

Touching the LED can result in permanent damage of the light source. The light source contained in this luminaire shall only be replaced by the manufacturer or his service agent or a similar qualified person.



PREVENTING ELECTROSTATIC DAMAGE

A discharge of static electricity may damage sensitive components. Always be properly grounded when touching leads or circuitry inside the luminaire. Use a wrist strap connected by a ground cord to the housing. Avoid touching the light sources with bare hands.

DRIVERS & ACCESSORIES

For latest version of driver matrix and available accessories check www.supermodular.com or connect with your sales contact.