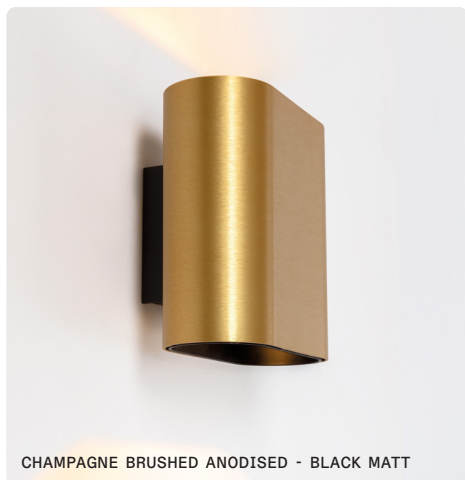
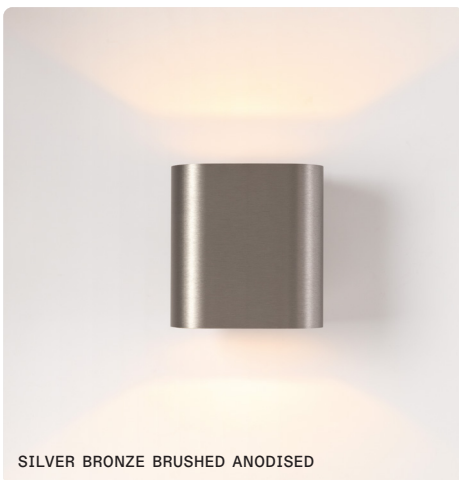


# DUELL WALL

UP/DOWN 2X



CHAMPAGNE BRUSHED ANODISED - BLACK MATT



SILVER BRONZE BRUSHED ANODISED



BRONZE BRUSHED ANODISED - CHAMPAGNE ANODISED

## DESCRIPTION

### Indoor version:

Wall mounted oval shaped LED luminaire for up and downlight application. The luminaire consists of 6 main components: the body with an outer and an inner shell, a wall box, an electrocoated internal bracket, a wall bracket and a LED driver.

The internal heat dissipation bracket holds the two LED's and accommodates the LED driver. The LED's are protected against touching or dust by means of a transparent polycarbonate cover. Both outer and inner shell are mounted on the internal bracket via the wall box. The wall bracket is fitted in the wall box by means of a screw. The wall box contains a 3-pole screw terminal for connection to the mains. In case of a dimmable version, two extra push-in connector are provided for the connection to the dimming system. IP20 protection grade for indoor use.

### Outdoor version:

Wall mounted oval shaped LED luminaire for up and downlight application for outdoor use. The luminaire consists of 5 main components: the body with an outer and an inner shell, a wall box, an electrocoated internal bracket and a wall bracket.

The internal heat dissipation bracket holds the two watertight LED modules. Both outer and inner shell are mounted on the internal bracket via the wall box. The wall bracket is fitted in the wall box by means of a screw. The wall box contains 2 watertight shrinkable connectors. IP55 protection grade suitable for outdoor use or indoor use in damp or wet locations. Not suitable for installation closer than 5km from the coast.

## MATERIALS

### Indoor version:

- Inner body: extruded aluminum. Available in black matt scratch resistant powder coating or finished in gold or champagne anodization
- Outer body: extruded aluminum. Available in fine-textured scratch resistant powder coating matt black or matt white. Also available in brushed anodization in the colours black, bronze, silver bronze, gold or champagne
- Wall box: diecast aluminum, finished in fine-textured scratch resistant powder coating matt black or matt white
- Internal bracket: sheetmetal aluminum, black electrocoated, thickness 3mm
- Wall bracket: sheetmetal, stainless steel, thickness 1.5mm
- LED protection cover: polycarbonate, transparent, thickness 1mm

### Outdoor version:

- Inner body: extruded aluminum. Available in gold or champagne anodization finish
- Outer body: extruded aluminum. Available in fine-textured scratch resistant powder coating matt black or matt white
- Wall box: diecast aluminum, finished in fine-textured scratch resistant powder coating matt black or matt white
- Internal bracket: sheetmetal aluminum, black electrocoated, thickness 3mm
- Wall bracket: sheetmetal, stainless steel, thickness 1.5mm

## TECHNICAL CHARACTERISTICS

### Indoor version:

- Dimensions: height 160mm, width 152mm, depth 102mm
- COB high-power LED
- Colour temperature: 2700K
- CRI90+
- Binning: 3 SDCM
- Total luminaire output: 763lm (2700K, champagne anodized inner shell)
- Power consumption: 12W (driver included), 64lm/W
- Built-in LED driver: mains (trailing edge) dimmable, DALI, 1-10V or pushdim
- Warranty period: 5 years
- Power: 220-230V, 50-60Hz
- Class 1
- Only for indoor use (IP20)
- Glow wire rating 960°C
- Lifetime: L90B10 @50.000 hours

### Outdoor version:

- Dimensions: height 160mm, width 152mm, depth 102mm
- Medium power LED, AC module
- Colour temperature: 2700K or 3000K
- CRI90+
- Binning: 3 SDCM
- Total luminaire output: 677lm (3000K, champagne anodized inner shell)
- Power consumption: 12W, 56lm/W (3000K, champagne anodized inner shell)
- No LED driver required
- Warranty period: 5 years
- Power: 220-230V, 50-60Hz
- Class 1
- Suitable for outdoor use (IP55)
- Glow wire rating 960°C
- Lifetime: L80B20 @50.000 hours

## INSTALLATION

### Indoor version:

Base mounted (stainless steel wallplate) with two universal chipboard screws of max.  $\varnothing$  4.5 mm (not included). Luminaire can easily be tilted on top of the wall bracket. The luminaire is tilted on the wall bracket and secured (anti-theft) by means of a countersunk torx screw (T20 screwdriver needed)

Electrical connection to the mains with a 3-pole screw terminal (included). Suitable for wiring sections up to 1.5mm<sup>2</sup> (16 AWG).

In case of a dimmable version, connection to the dimming system is obtained via 2 screwless push-in connectors suitable for wiring sections up to 1.5mm<sup>2</sup> (16 AWG).

### Outdoor version:

Base mounted (stainless steel wallplate) with two universal chipboard screws of max.  $\varnothing$  4.5 mm (not included). Luminaire can easily be tilted on top of the wall bracket. The luminaire is tilted on the wall bracket and secured (anti-theft) by means of a countersunk torx screw (T20 screwdriver needed)

Electrical connection to the mains (line and neutral) with 2 heat shrinkable watertight connectors (included) suitable for wiring sections up to 1.5mm<sup>2</sup> (16 AWG). Connection to the earthing is directly done inside the aluminum wall box.

## ACCESSORIES

None

## STANDARDS AND DIRECTIVES

- 2006/95/EC - Low Voltage Directive
- 2004/108/EC - EMC Directive
- 2011/65/EU - RoHS Directive
- 2009/125/EC - ECO design Directive
- 245/2009/EC + 347/2010/EU - ECO design Directive
- 1194/2012/EU - ECodesign Regulation
- EN 60598-1:2008 +A1:2009 - Luminaires. General requirements and tests
- EN 62471:2008 - Photobiological safety of LED lamps and lamp systems
- EN 62493: 2010 - Assessment of lighting equipment related to human exposure to electromagnetic fields
- EN 60598-2-1 - Fixed general purpose luminaires
- EN 55015:2006 +A1:2007 +A2:2009 - Limits and methods of measurement of radio disturbance characteristics of electrical lighting and similar equipment
- EN 61000-3-2:2006 +A1,A2:2009 - Limits for harmonic current emissions (equipment input current  $\leq$  16 A per phase)
- EN 61000-3-3:2013 - Limitation of voltage changes, voltage fluctuations and flicker in public low-voltage supply systems, for equipment with rated current  $\leq$  16 A per phase and not subject to conditional connection
- EN 61547:2009 - EMC Immunity Requirements
- EN 50581:2012 - Technical documentation for the assessment of electrical and electronic products with respect to the restriction of hazardous substances