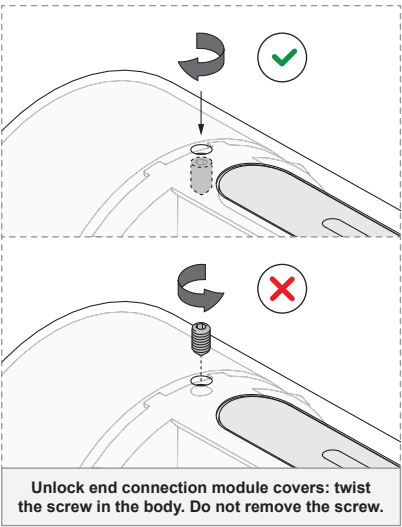
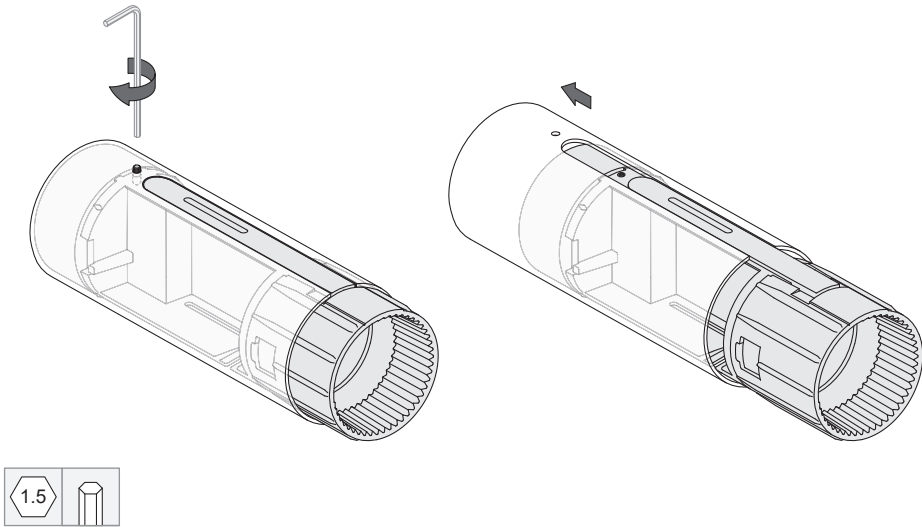


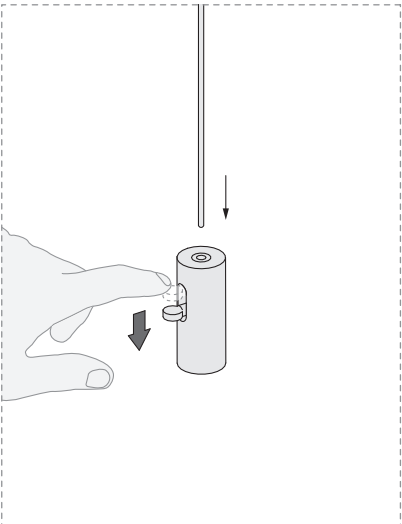
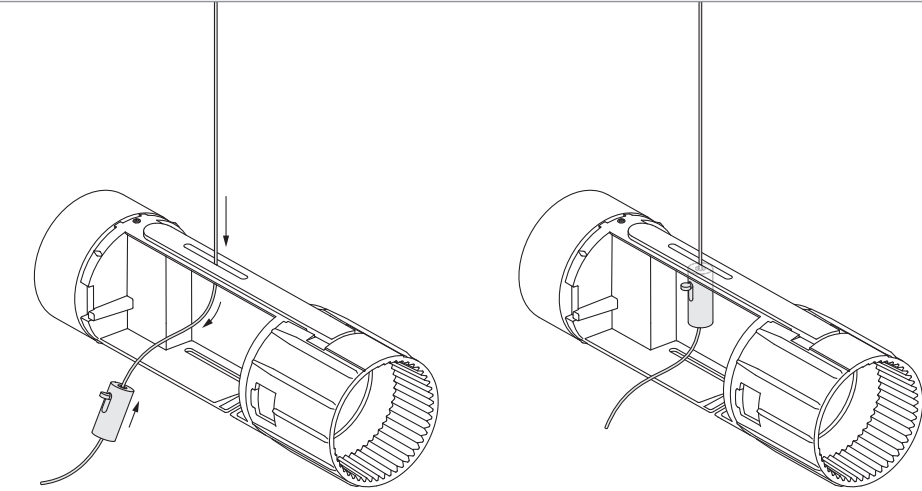
Straw

US_9365XXXX

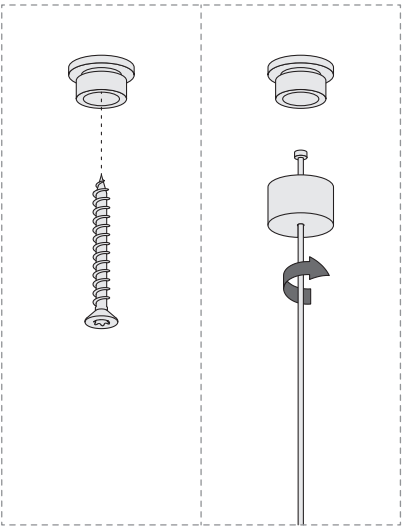
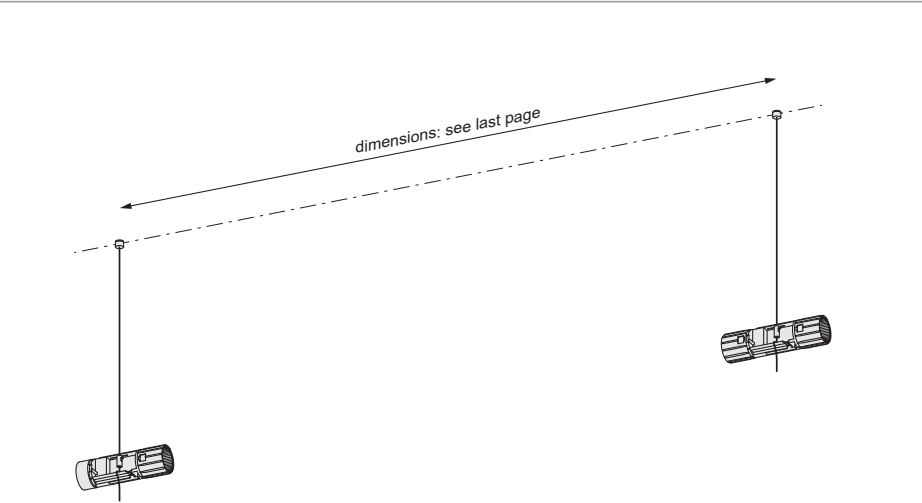
1. Remove the covers from the connection modules.



2. Add the steel cables to the connection modules.



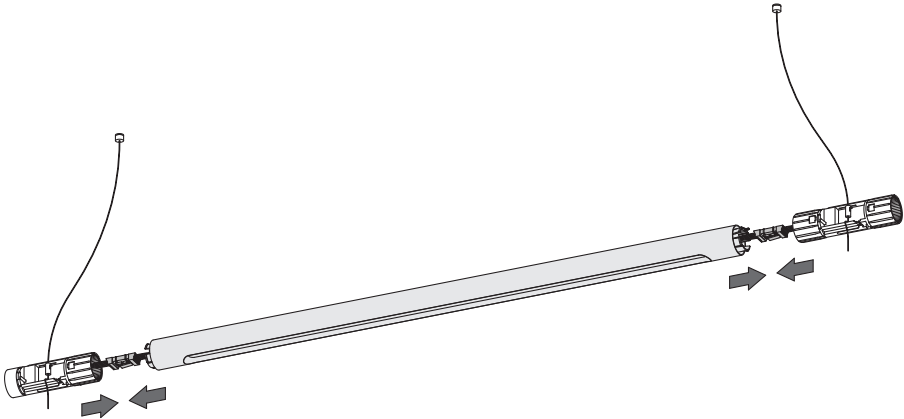
3. Mount the steel cables with the cable holders to the ceiling.

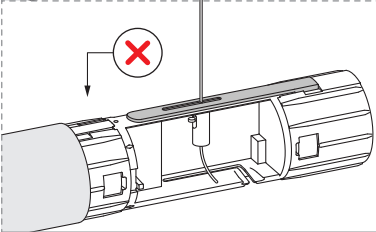
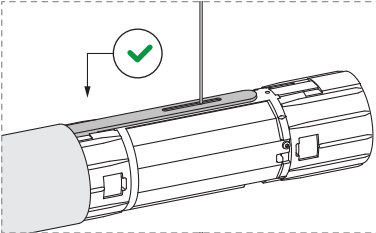


Straw

US_9365XXXX

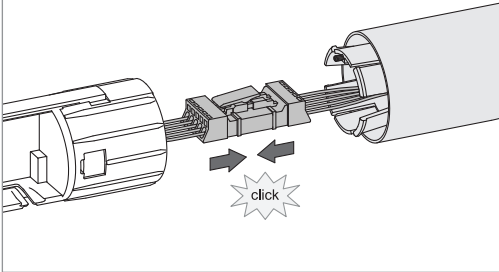
4. Connect the first linear module to the connection modules.



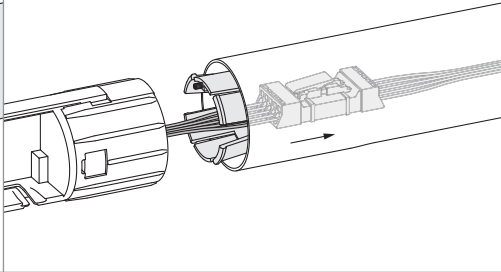


Pay attention to the orientation of the rib on the top side of the connection modules.

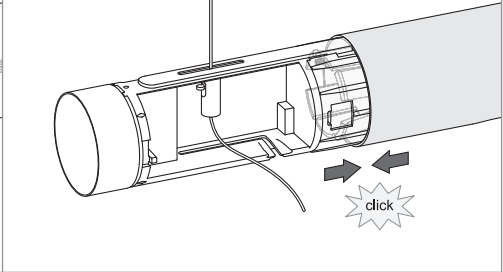
A



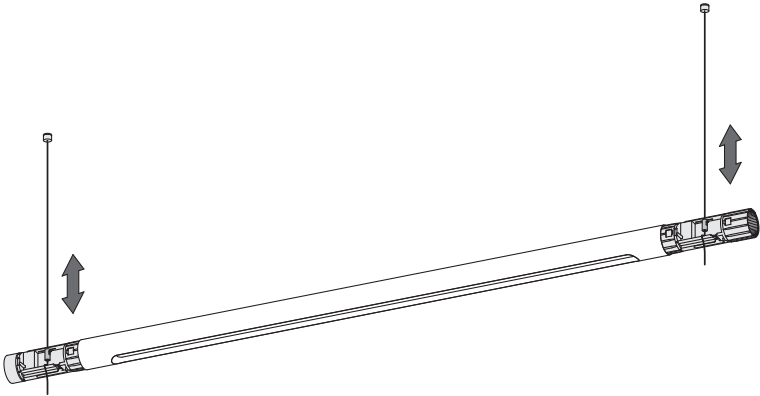
B

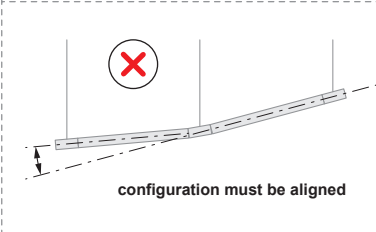
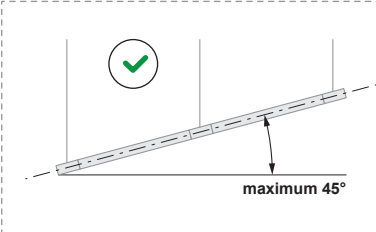


C




5. Level the first linear module.

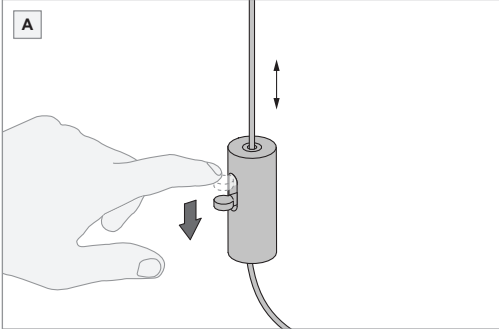




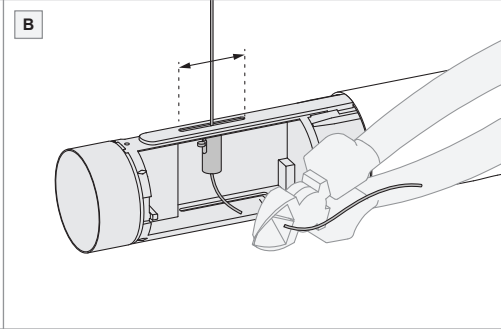
configuration must be aligned

OR  MAX 45°

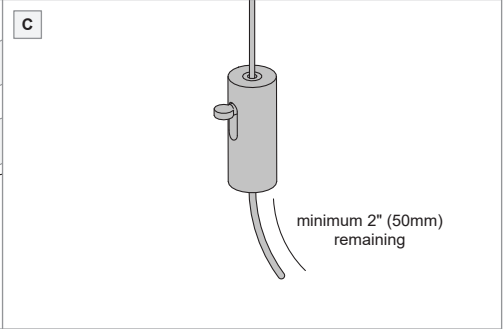
A



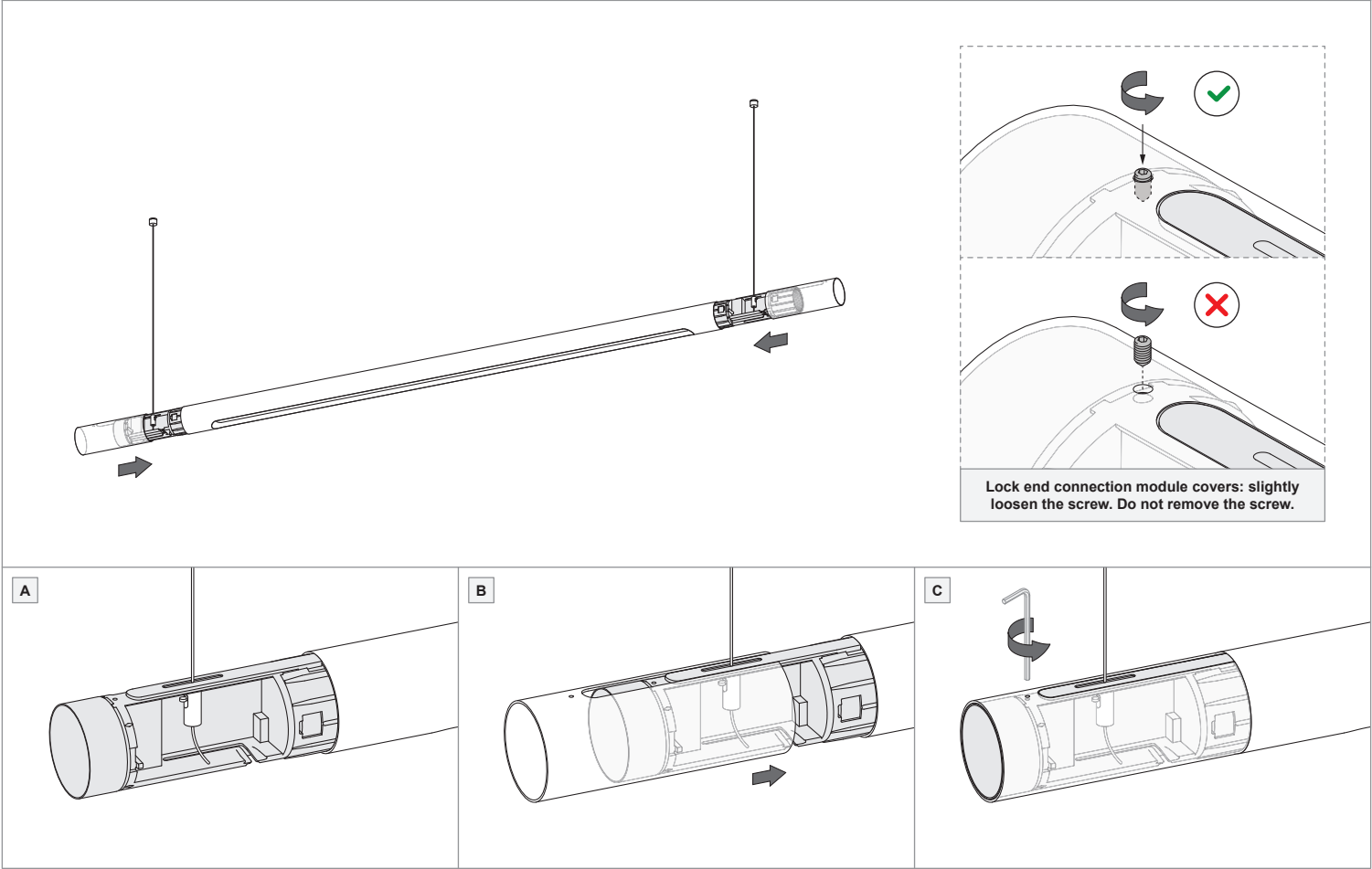
B



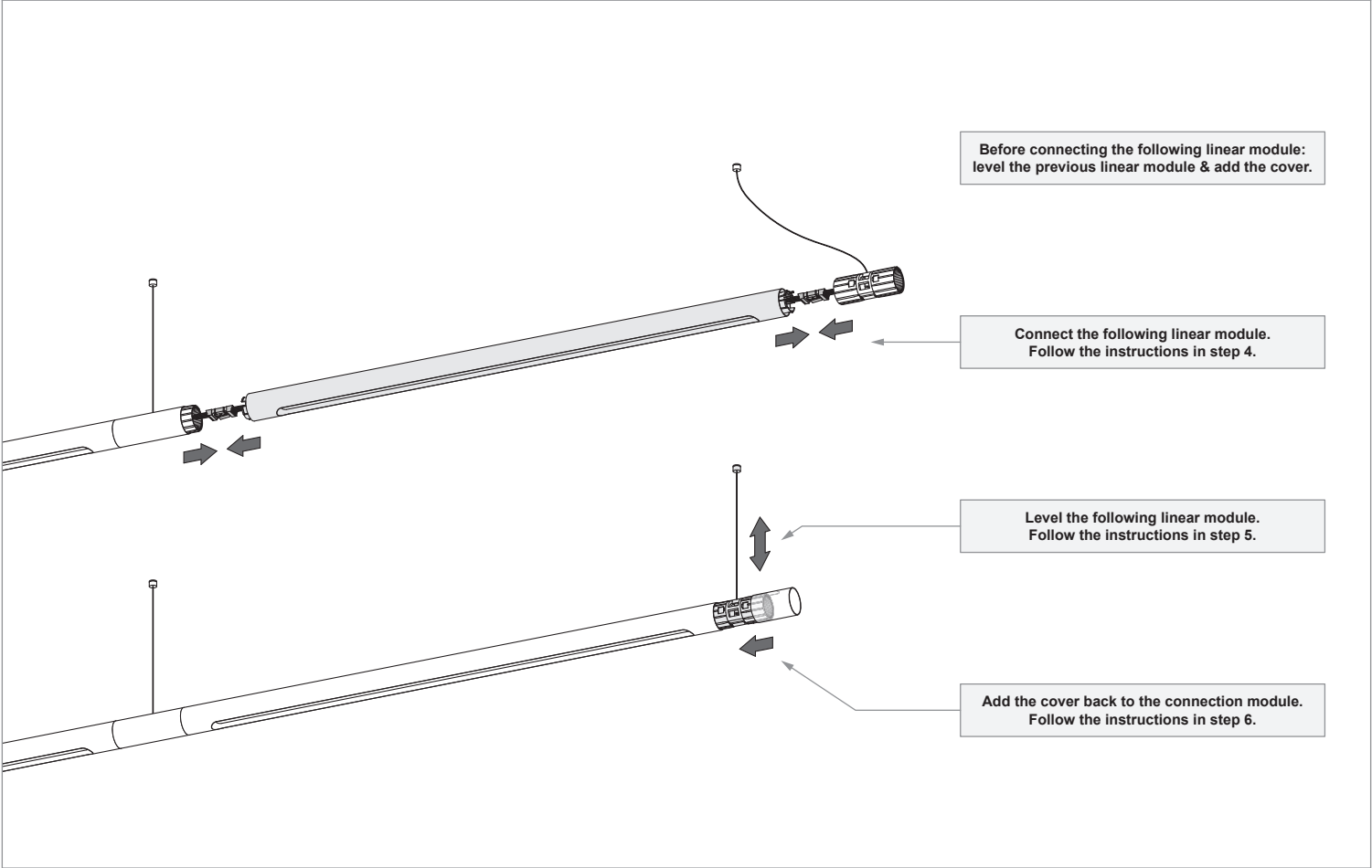
C



6. Add the covers back to the connection modules.



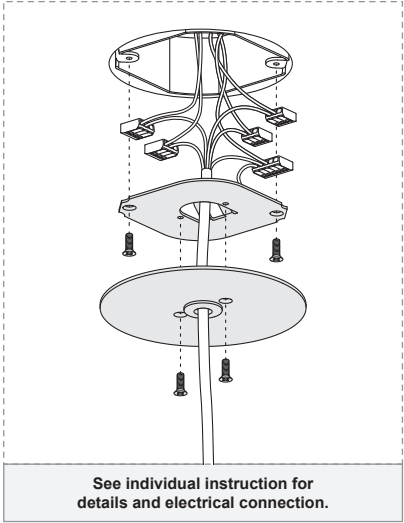
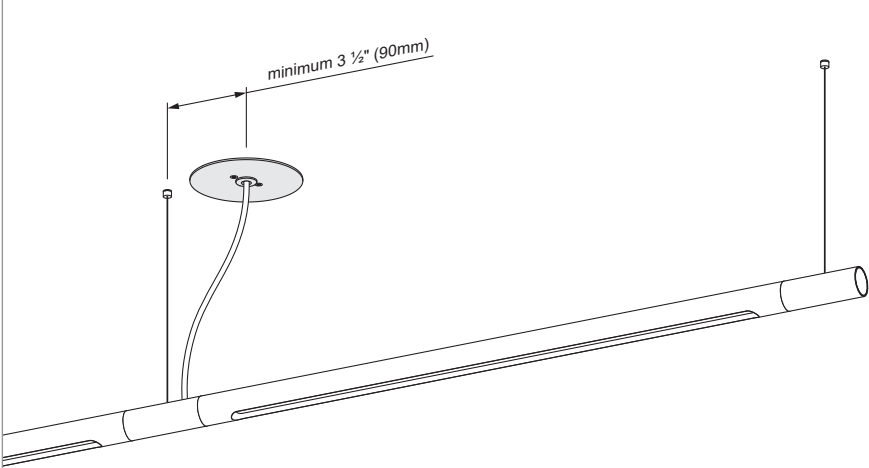
7. Add the following linear modules.



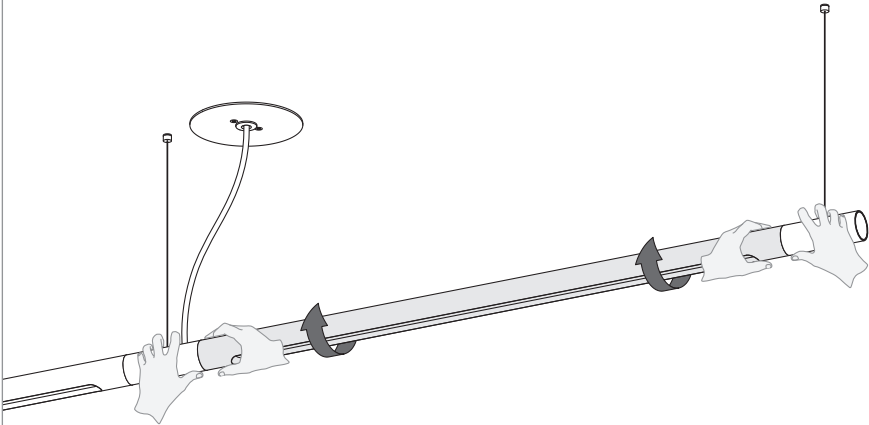
Straw

US_9365XXXX

8. Install the power feed canopy and make the electrical connection.

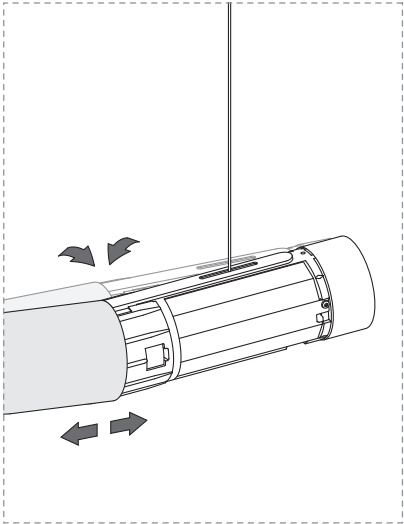
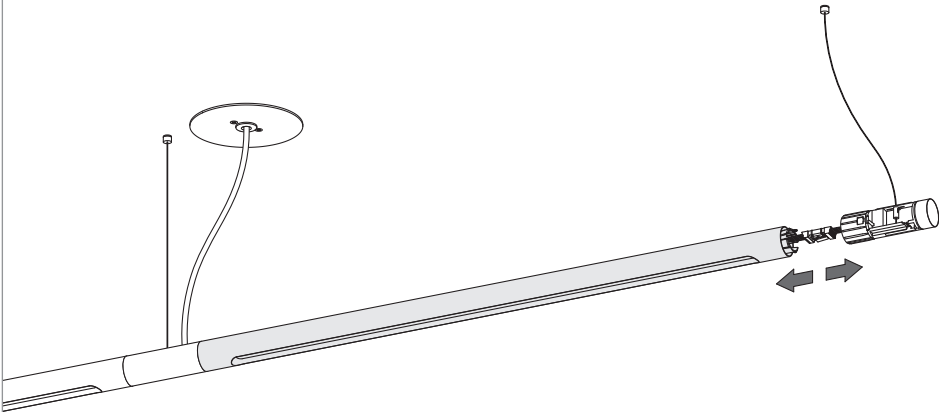


9. Module rotation.



Make sure both ends of each linear module are equally rotated to keep the configuration aligned.

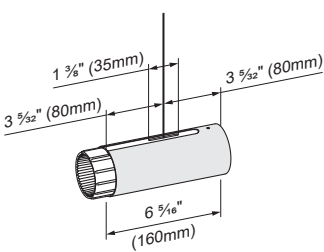
10. Unlock modules.



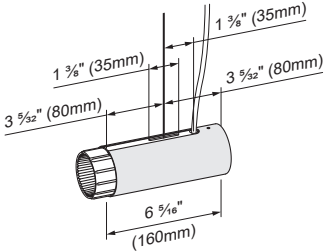
Straw - components & dimensions

US_9365XXXX

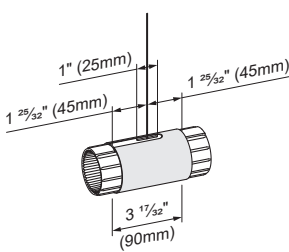
Components & dimensions - connection modules.



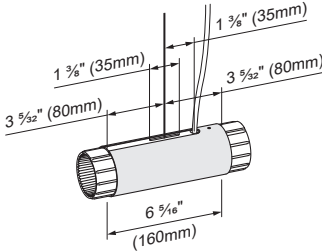
Straw 60 Suspension End
US_936560XX



Straw 60 Power Feed and Suspension End
US_936561XX

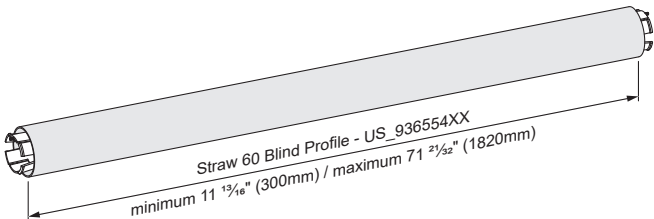


Straw 60 Suspension Mid
US_936562XX

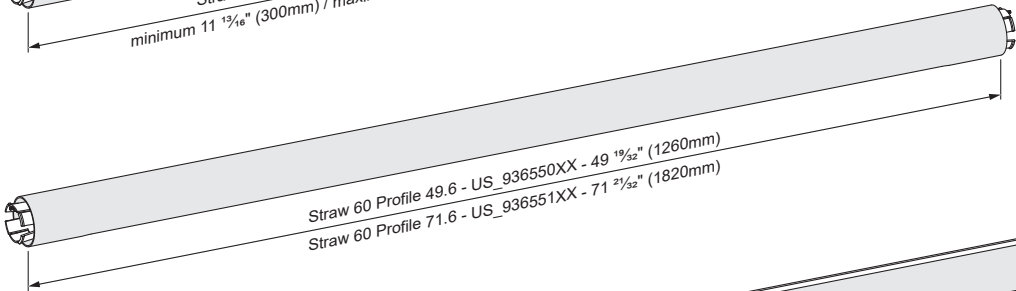


Straw 60 Power Feed and Suspension Mid
US_936563XX

Components & dimensions - linear modules.

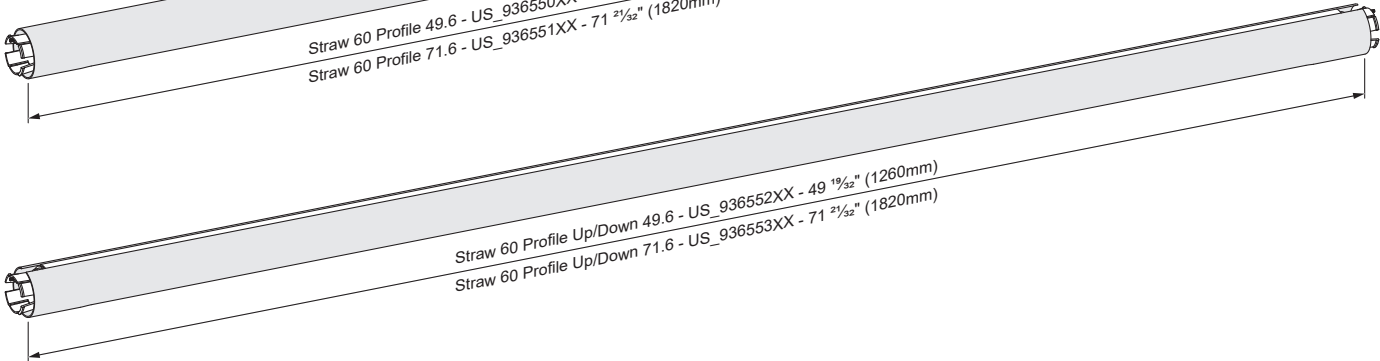


Straw 60 Blind Profile - US_936554XX



Straw 60 Profile 49.6 - US_936550XX - 49 19/32" (1260mm)

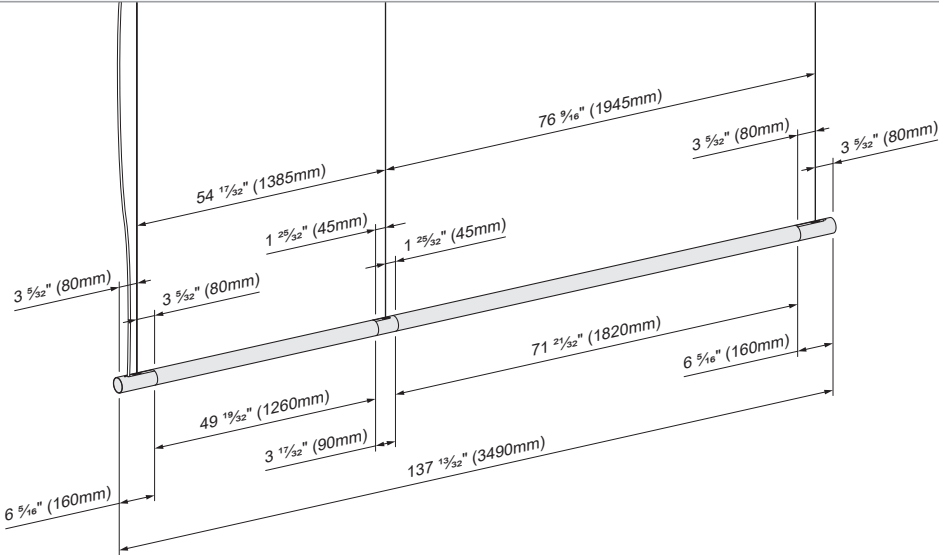
Straw 60 Profile 71.6 - US_936551XX - 71 2 1/2" (1820mm)



Straw 60 Profile Up/Down 49.6 - US_936552XX - 49 19/32" (1260mm)

Straw 60 Profile Up/Down 71.6 - US_936553XX - 71 2 1/2" (1820mm)

Configuration example.



Maximum amount of linear light modules,
to be connected to a single power feed.

7 pcs	when at least 1 module with uplight is connected
14 pcs	When no modules with uplight are connected

INSTALLATION INSTRUCTION

- Read all instructions.
- Save these instructions.

BASIC SAFETY PRECAUTIONS

- Dry locations only.

LIGHT SOURCE - DO NOT TOUCH LED



Touching the LED can result in permanent damage of the light source. The light source and/or driver contained in this luminaire shall only be replaced by the manufacturer or his service agent or a similar qualified person.

PREVENTING ELECTROSTATIC DAMAGE



A discharge of static electricity may damage sensitive components. Therefore do not touch the LED nor the stripped parts of the wires with bare hands. Always be properly insulated by using ESD gloves.

COMPONENTS & ACCESSORIES

For latest version of all available components and accessories, check www.supermodular.com or connect with your sales contact.

