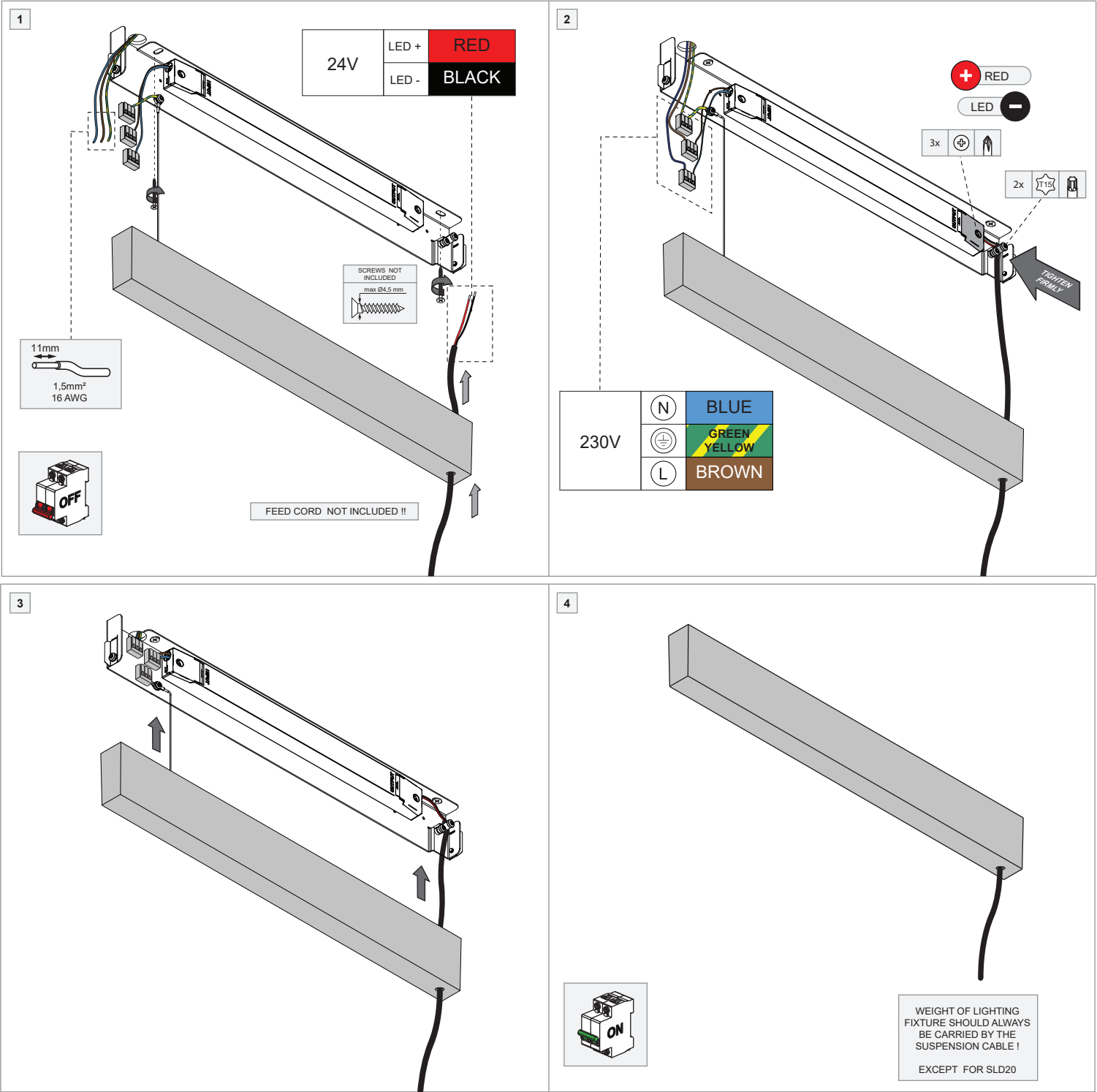


LED Driver Constant Voltage 24V Surface (For Suspended Mounting) Non-Dim 100W

93009506\_93009507



ELECTRICAL RATINGS				
VERSION	INPUT		OUTPUT	
	Voltage (V)	Frequency (Hz)	Voltage (V)	Power (W)
93009506-93009507 (100W)	230 AC	50 - 60	24 DC	100

MOUNTING HOLES	

SECONDARY ELECTRICAL CONNECTION WITH 24V LEDSTRIP (PROFILE)

70mm

5mm

0.75mm² 18 AWG

24V

LED + RED

LED - BLACK

**PREVENTING ELECTROSTATIC DAMAGE**

A discharge of static electricity may damage sensitive components. Therefore do not touch the LED nor the stripped parts of the wires with bare hands. Always be properly insulated by using ESD gloves.

**CAN BE COMBINED WITH** (NOT INCLUDED)

- Profiles with ledstrip = max.100W

**LIGHT ENGINES & ACCESSORIES**

For latest version of all light engines and available accessories check [www.supermodular.us](http://www.supermodular.us) or connect with your sales contact.

