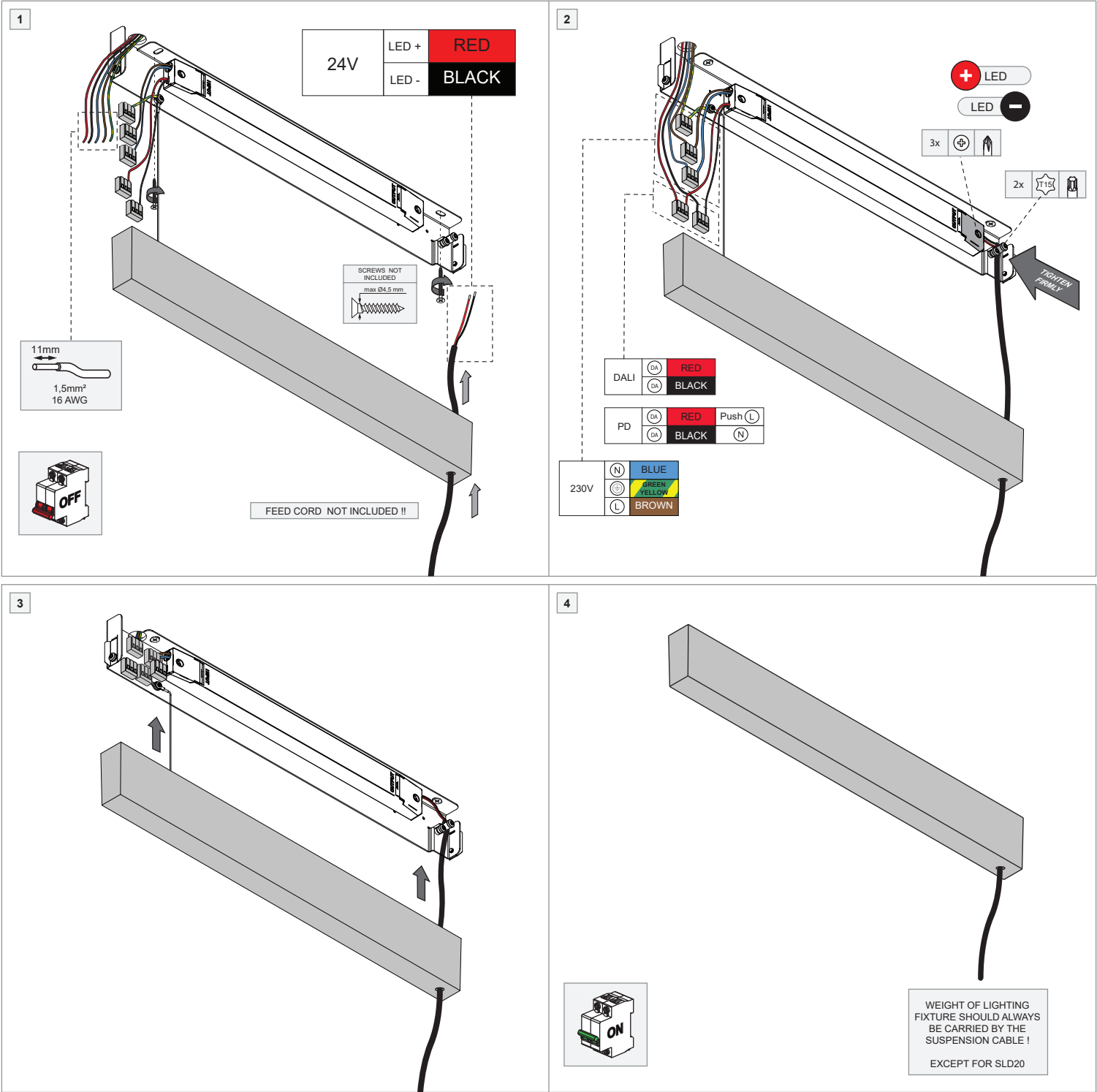


LED Driver Constant Voltage 24V Surface (For Suspended Mounting)DALI/Push-Dim 100W

98009506_98009507



VERSION	ELECTRICAL RATINGS			
	INPUT		OUTPUT	
	Voltage (V)	Frequency (Hz)	Voltage (V)	Power (W)
98009506-98009507 (100W)	230 AC	50 - 60	24 DC	100

MOUNTING HOLES	
<div><div>36mm</div><div>5.5mm</div><div>12mm</div><div>385mm</div><div>475mm</div><div>11mm</div><div>13mm</div><div>28mm</div><div>30mm</div></div>	

SECONDARY ELECTRICAL CONNECTION WITH 24V LEDSTRIP (PROFILE)

70mm

5mm

0,75mm²

18 AWG

24V

LED +

RED

LED -

BLACK

ESD

PREVENTING ELECTROSTATIC DAMAGE

A discharge of static electricity may damage sensitive components. Therefore do not touch the LED nor the stripped parts of the wires with bare hands. Always be properly insulated by using ESD gloves.

CAN BE COMBINED WITH

(NOT INCLUDED)

- Profiles with ledstrip = max. 100W

LIGHT ENGINES & ACCESSORIES

For latest version of all light engines and available accessories check www.supermodular.us or connect with your sales contact.

