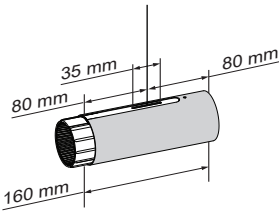


Straw - Dimensions and Combinations

9365XXXX

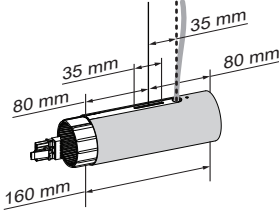
Suspension End

936560XX



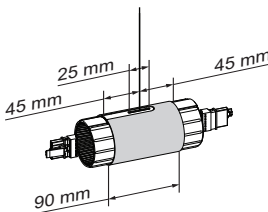
Power Feed and Suspension End

936561XX



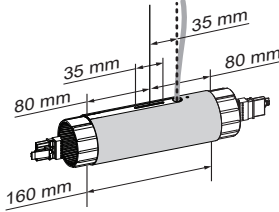
Suspension Mid

936562XX



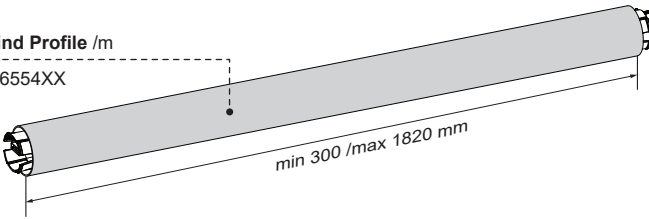
Power Feed and Suspension Mid

936563XX



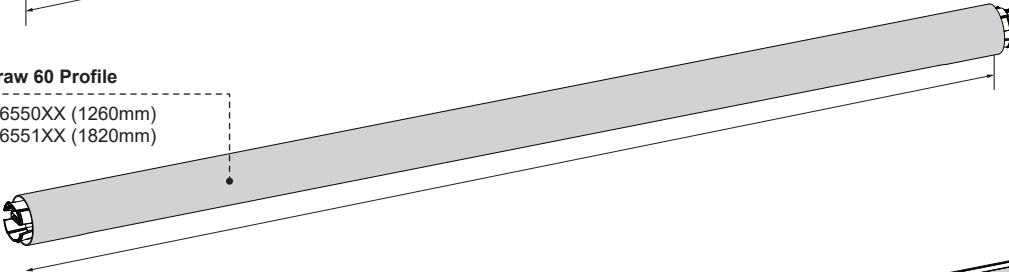
Blind Profile /m

936554XX



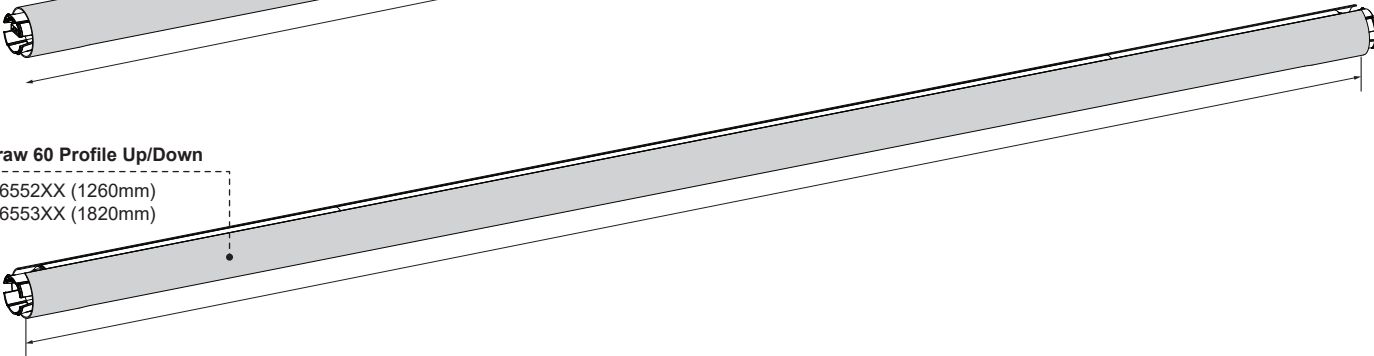
Straw 60 Profile

936550XX (1260mm)  
936551XX (1820mm)

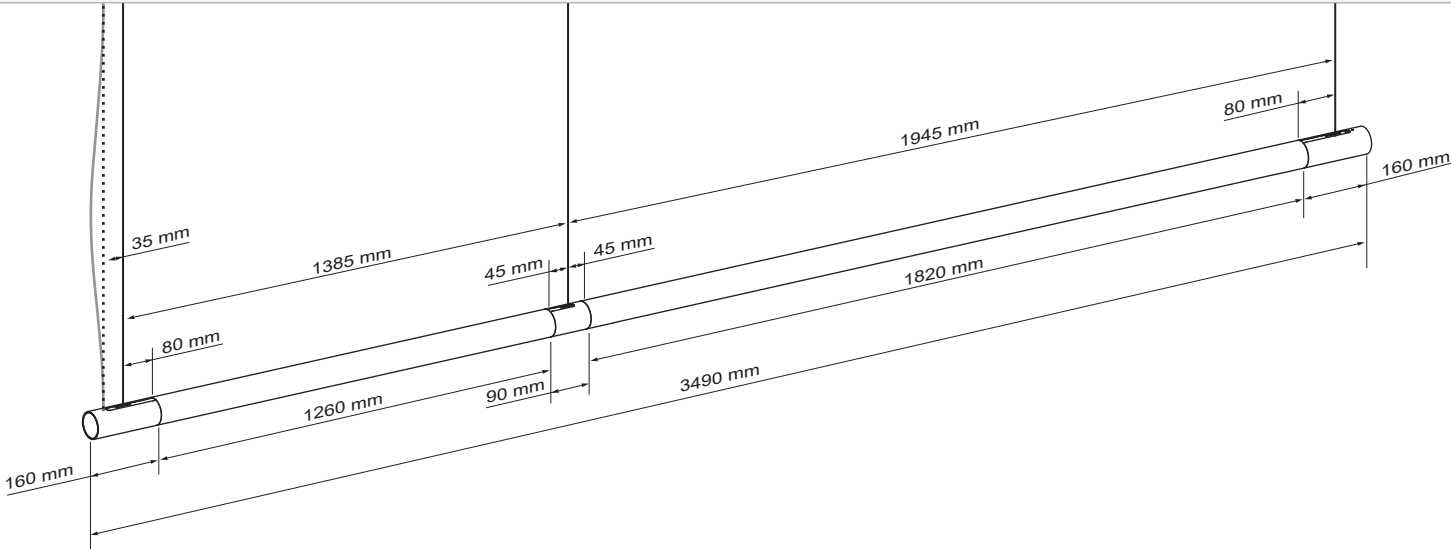


Straw 60 Profile Up/Down

936552XX (1260mm)  
936553XX (1820mm)

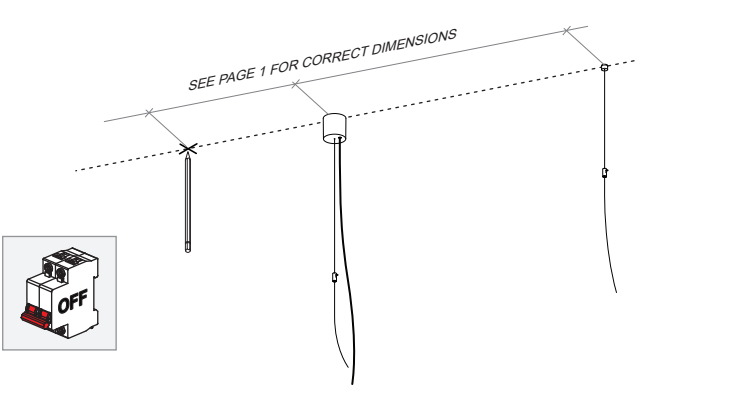


Configuration example



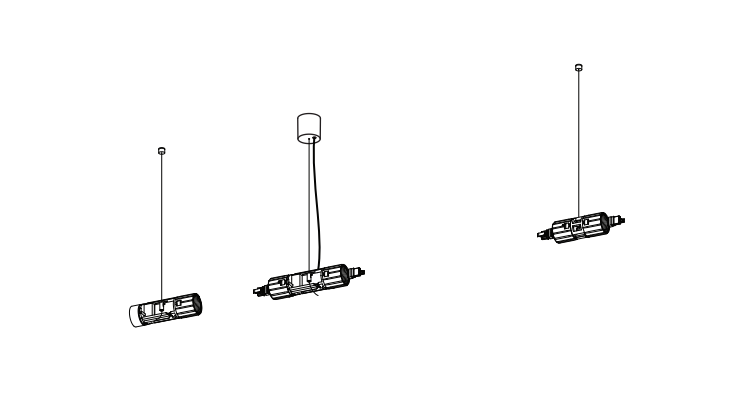
1

MOUNT SUSPENSION SETS AND POWER FEED CANOPY.  
SEE SEPARATE INSTALLATION INSTRUCTIONS FOR SUSPENSION SETS AND POWER FEED CANOPY



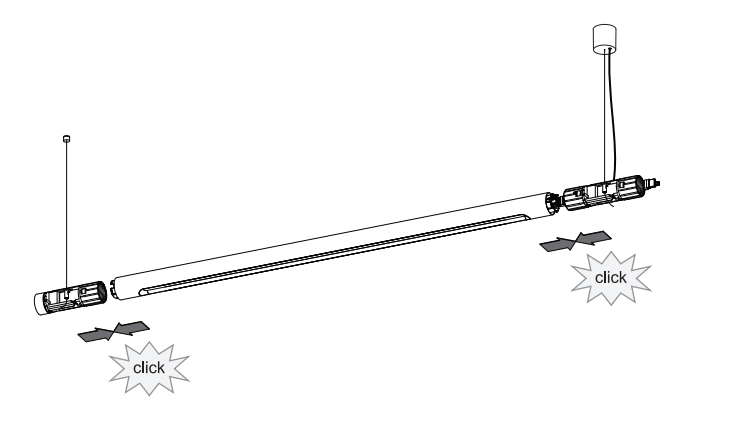
2

CONNECT MID/END MODULES ON SUSPENSION SETS. CONNECT POWERFEEDCABLE  
SEE SEPARATE INSTALLATION INSTRUCTIONS FOR SUSPENSION SETS AND POWER FEED CANOPY



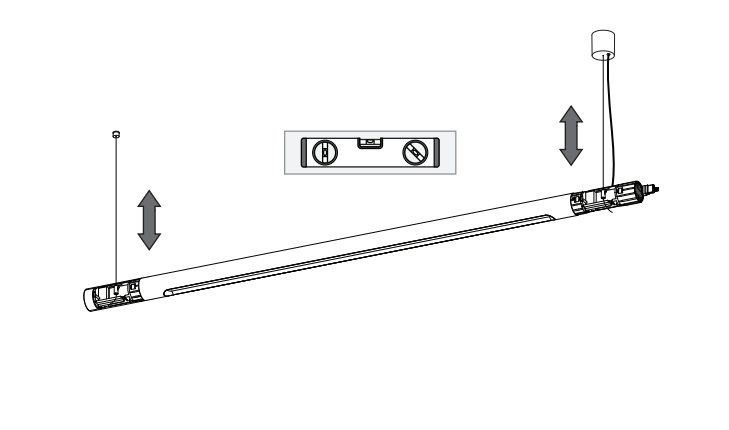
3

CONNECT FIRST LINEAR MODULE



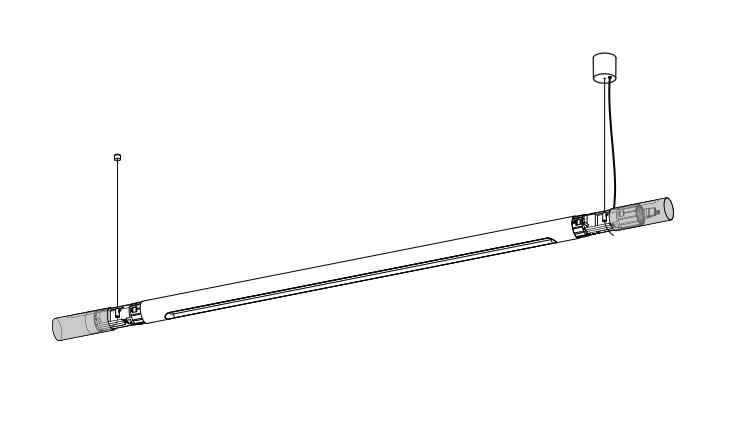
4

LEVEL CONFIGURATION



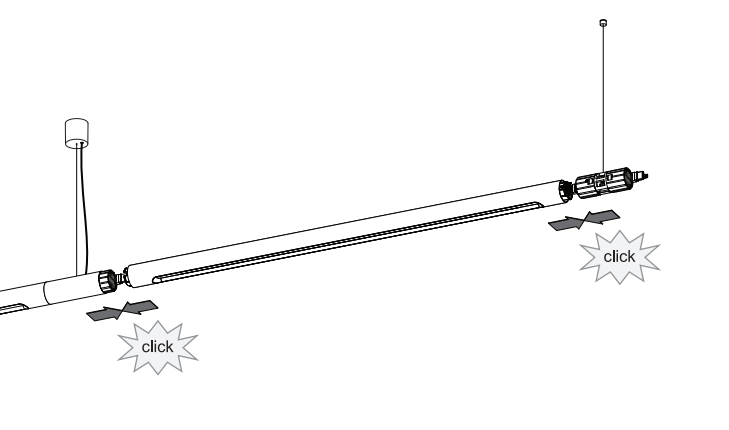
5

MOUNT COVERS BEFORE CONNECTING SECOND LINEAR MODULE



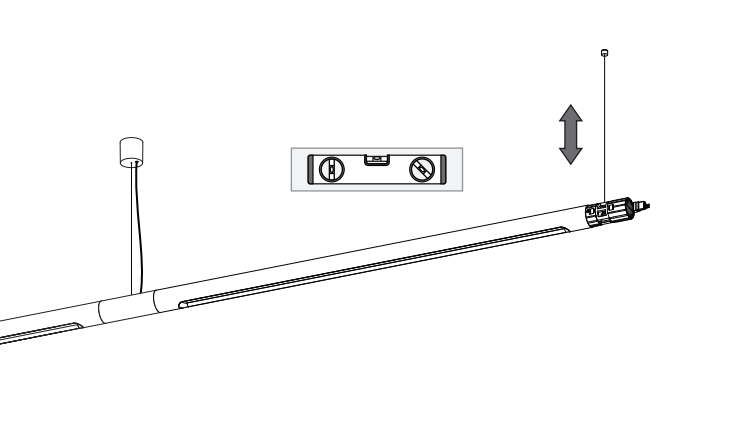
6

CONNECT NEXT LINEAR MODULE



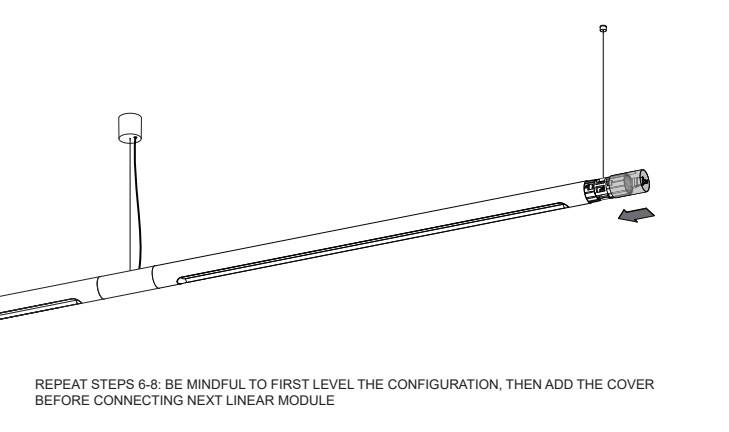
7

LEVEL CONFIGURATION



8

MOUNT COVER BEFORE CONNECTING NEXT MODULE

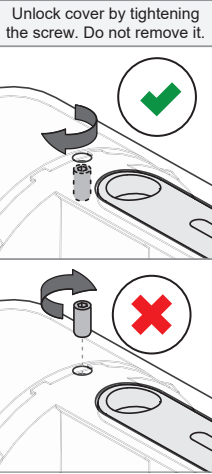
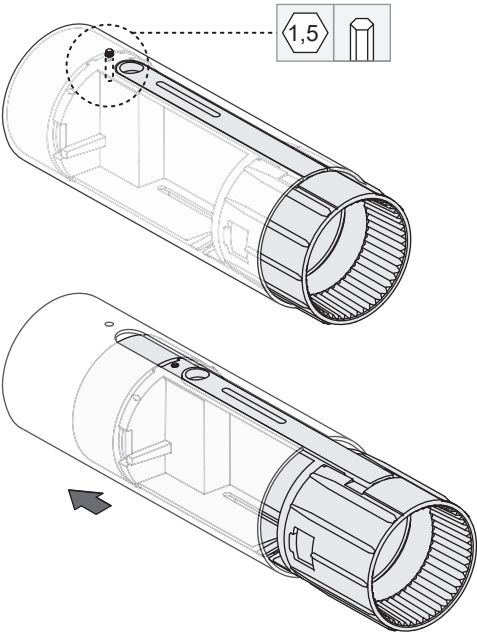


REPEAT STEPS 6-8: BE MINDFUL TO FIRST LEVEL THE CONFIGURATION, THEN ADD THE COVER BEFORE CONNECTING NEXT LINEAR MODULE

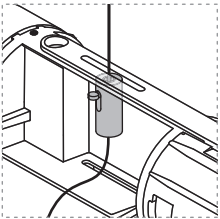
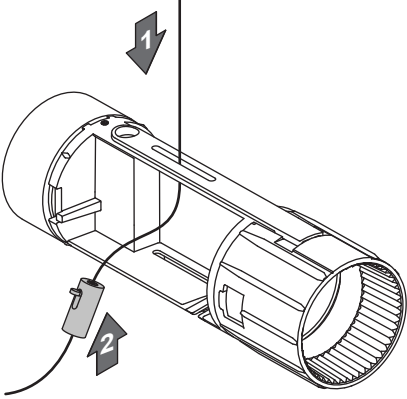
Straw

936560XX\_936561XX\_936562XX\_936563XX

REMOVE COVER

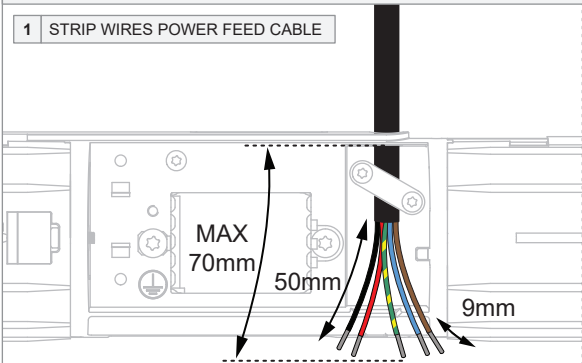


ATTACH CONNECTION MODULES ON SUSPENSION SET

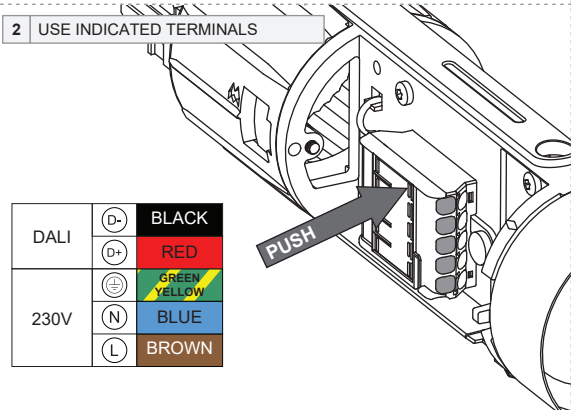


ADDITIONAL FOR SUSPENSION MODULES WITH POWERFEED

1 STRIP WIRES POWER FEED CABLE

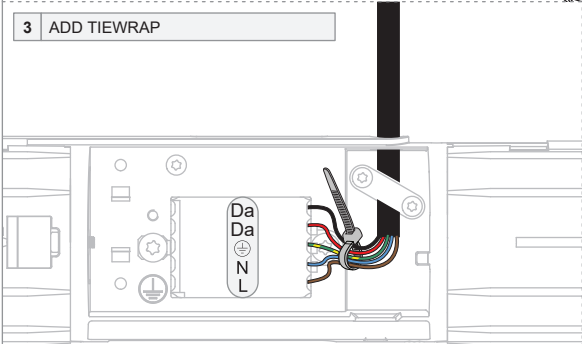


2 USE INDICATED TERMINALS

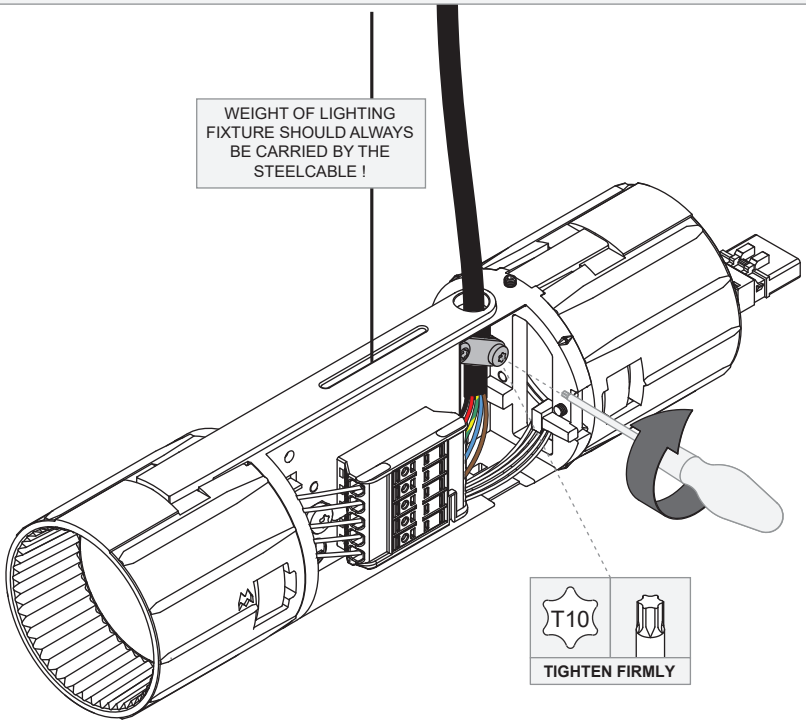


|      |    |                 |
|------|----|-----------------|
| DALI | D- | BLACK           |
|      | D+ | RED             |
|      |    | GREEN<br>YELLOW |
| 230V | N  | BLUE            |
|      | L  | BROWN           |

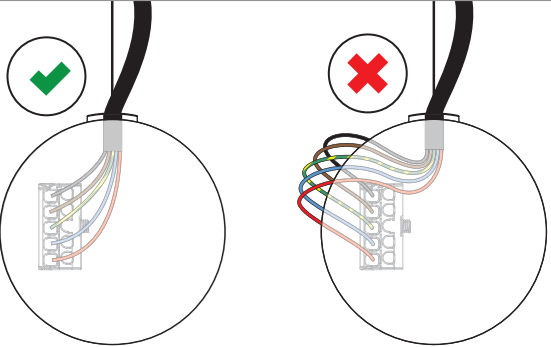
3 ADD TIEWRAP



WEIGHT OF LIGHTING  
FIXTURE SHOULD ALWAYS  
BE CARRIED BY THE  
STEELCABLE !



MAKE SURE THE WIRES ARE MOUNTED WITHIN THE PRODUCT ENCLOSURE !

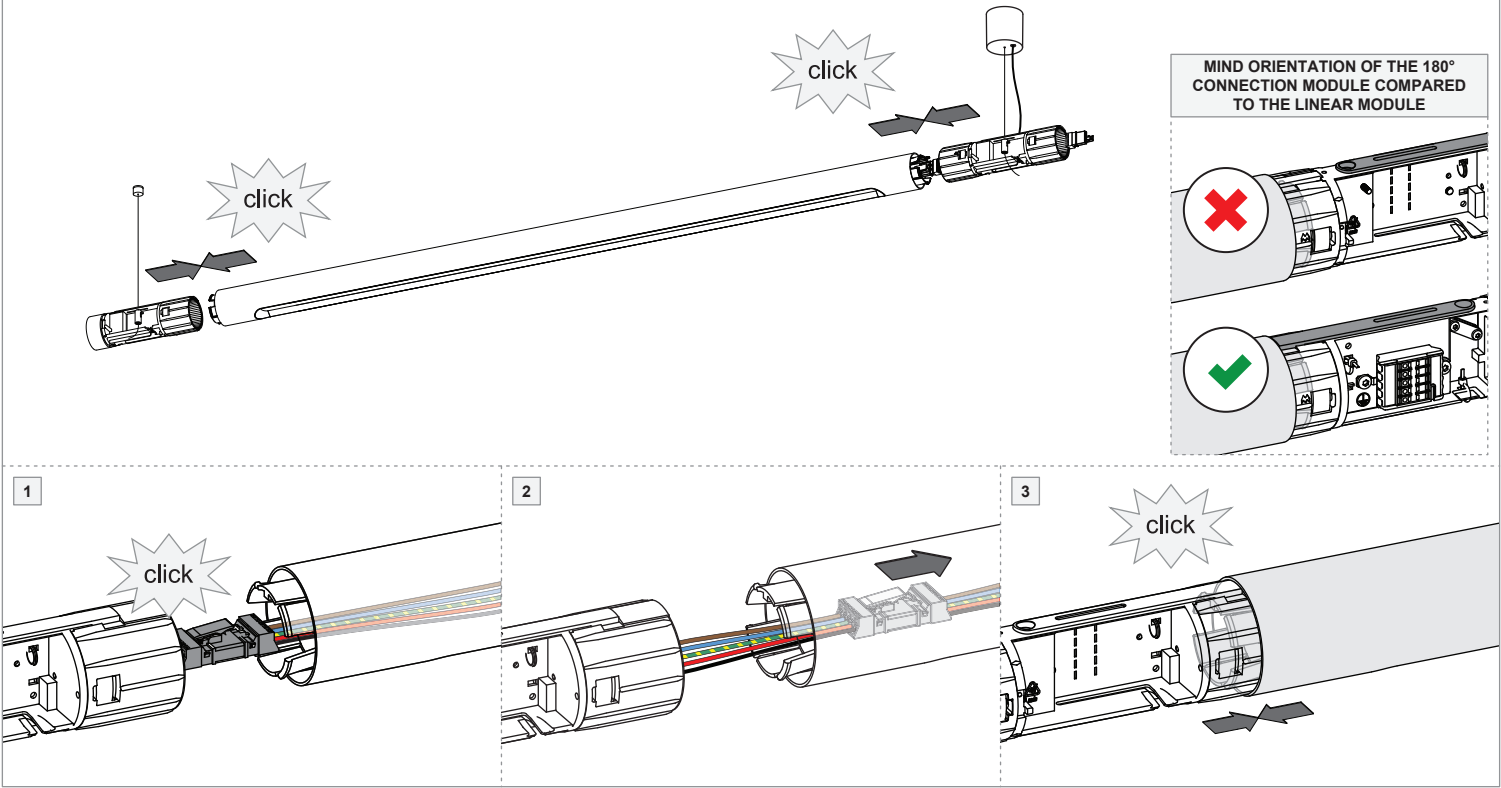


Straw

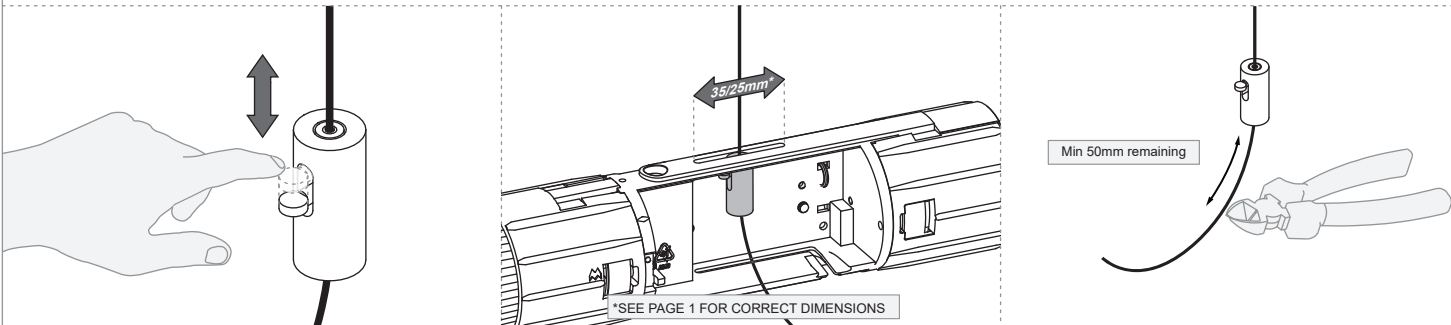
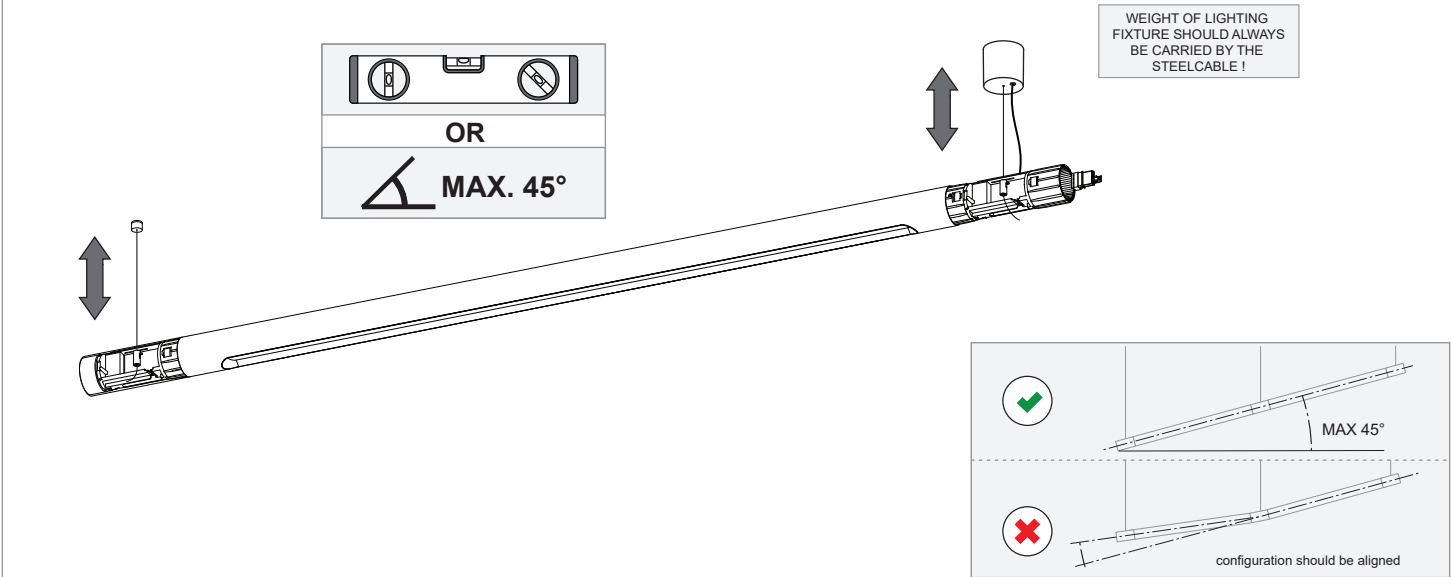
936560XX\_936561XX\_936562XX\_936563XX\_936550XX\_936551XX\_936552XX\_936553XX\_936554XX

CONNECT LINEAR MODULE BETWEEN 2x SUSPENSION MODULE

| MAXIMUM AMOUNT OF LINEAR LIGHT MODULES<br>CONNECTED TO 1 POWER FEED: |         |       |
|--|---------|-------|
|  | NON-DIM | DALI  |
| STRAW 60 LINEAR  | 21 pc   | 15 pc |
| STRAW 60 LINEAR UP   | 11 pc   | 7 pc  |



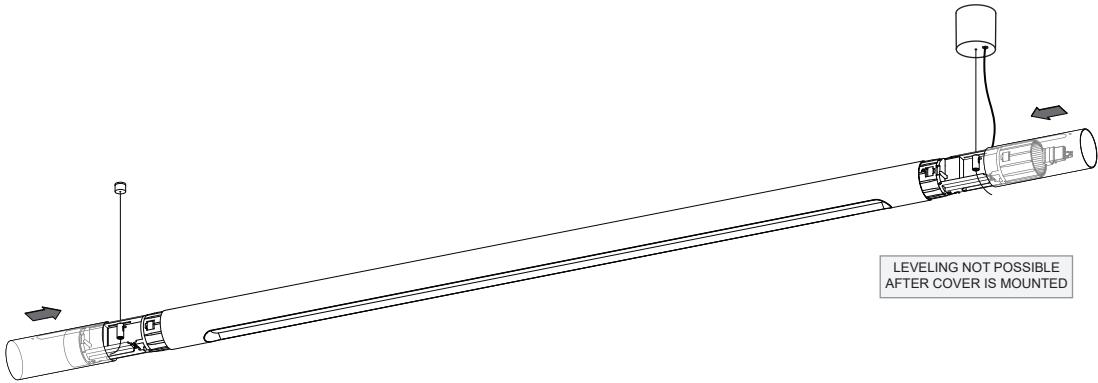
LEVEL CONFIGURATION



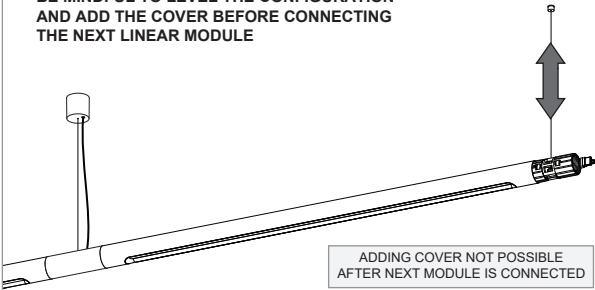
Straw

936560XX\_936561XX\_936562XX\_936563XX\_936550XX\_936551XX\_936552XX\_936553XX\_936554XX

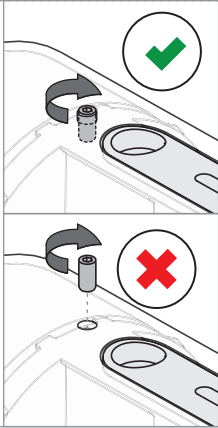
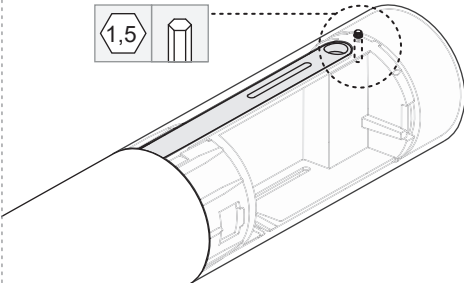
ADD COVERS



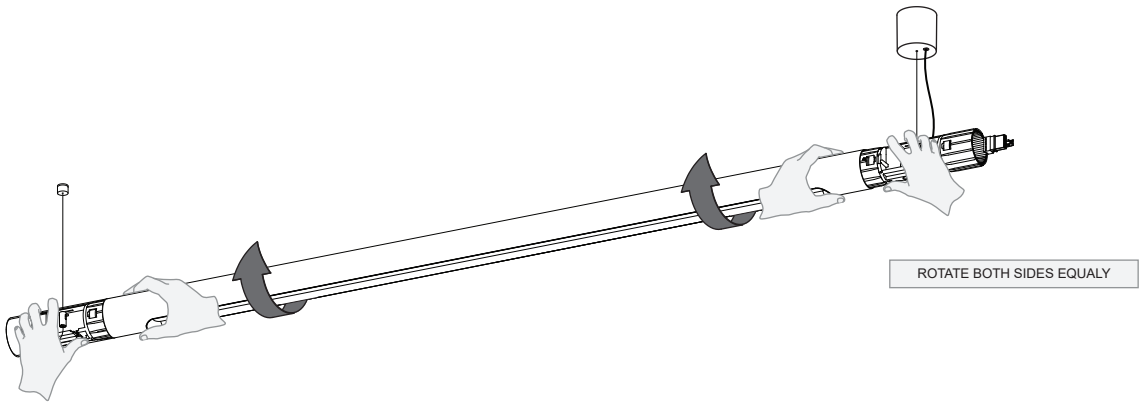
FOR CONFIGURATIONS WITH MULTIPLE LINEAR MODULES:  
BE MINDFUL TO LEVEL THE CONFIGURATION  
AND ADD THE COVER BEFORE CONNECTING  
THE NEXT LINEAR MODULE



LOCK END COVERS



MODULE ROTATION



UNLOCK MODULES

