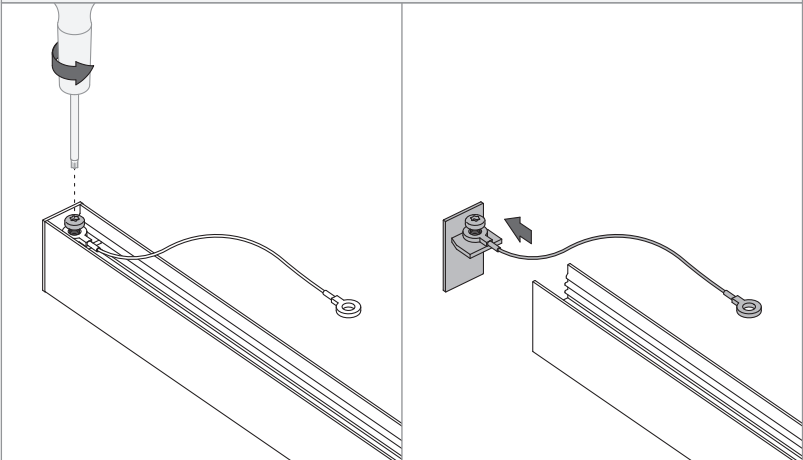


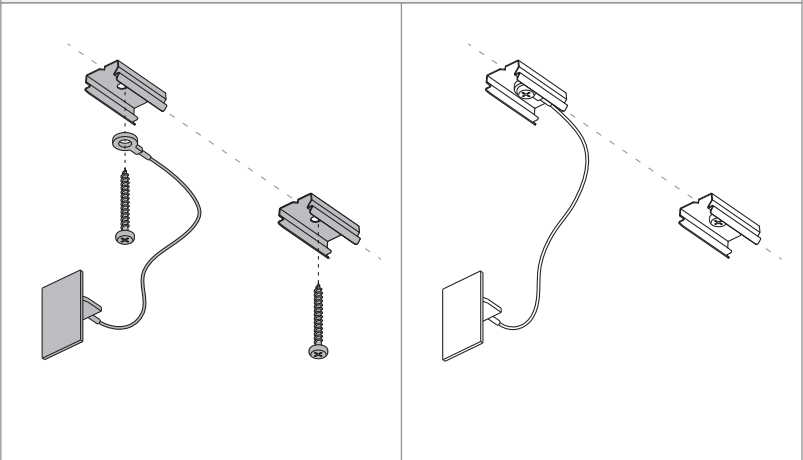
SLD20 - surface installation (1/2)

936300XX\_936310XX\_93632000\_93632100\_93632400\_93632500\_93632800\_93633000

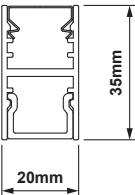
Remove the endplates with safety cable from the base profile.



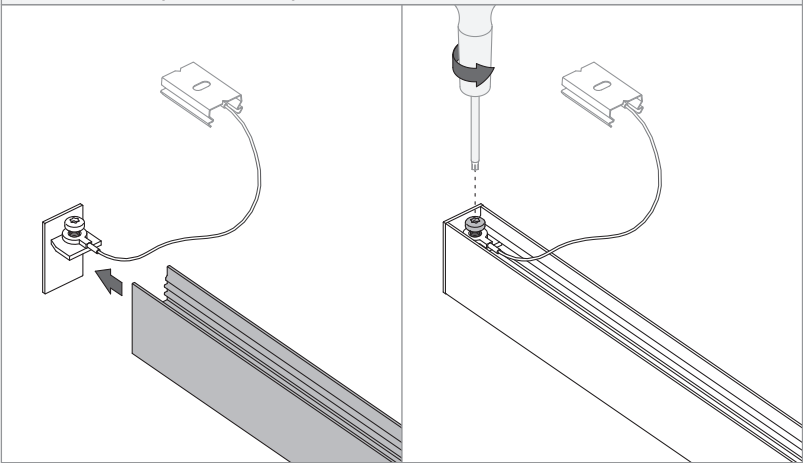
Mount the fixation springs and attach the endplates with the safety cable.



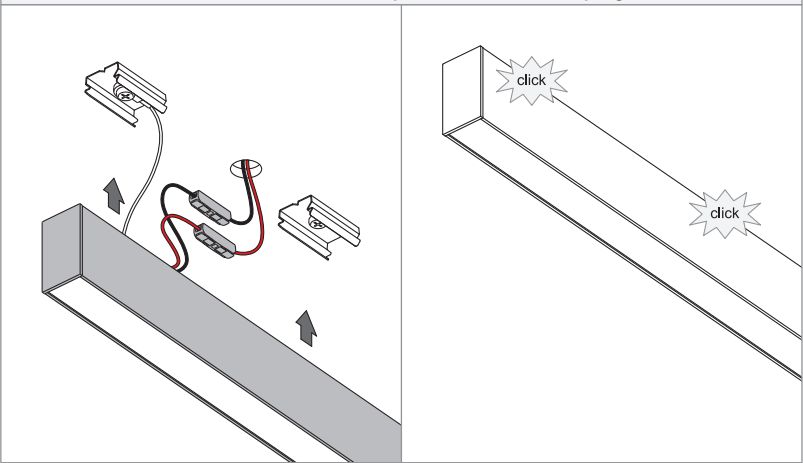
Dimensions.



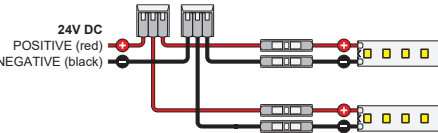
Re-attach the base profile to the endplates.



Make the electrical connection and click the base profile onto the fixation springs.

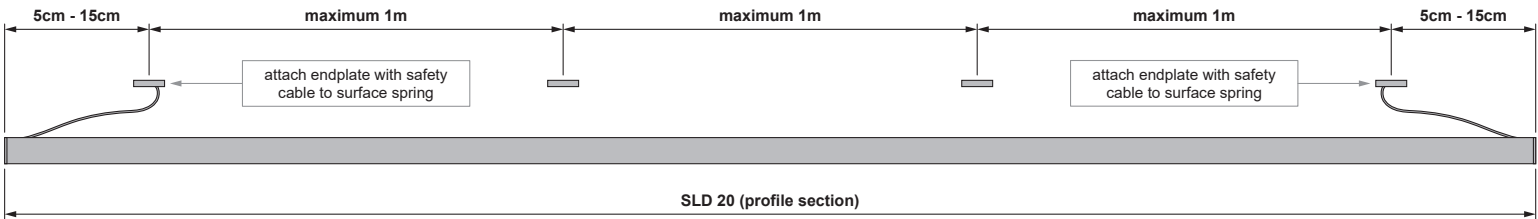


Electrical connection.



Make sure power is off when making or changing electrical connections. Respect the polarity. Always use a parallel connection for multiple 24V DC luminaires on a single power unit.

Fixation spring information.



On-site conditions (e.g. heat, humidity...) can lead to expansion of the diffuser. Therefore on-site shortening of the diffuser can be required.



**LIGHT SOURCE - DO NOT TOUCH LED**

Touching the LED can result in permanent damage of the light source. The light source and/or driver contained in this luminaire shall only be replaced by the manufacturer or his service agent or a similar qualified person.



**PREVENTING ELECTROSTATIC DAMAGE**

A discharge of static electricity may damage sensitive components. Therefore do not touch the LED nor the stripped parts of the wires with bare hands. Always be properly insulated by using ESD gloves.

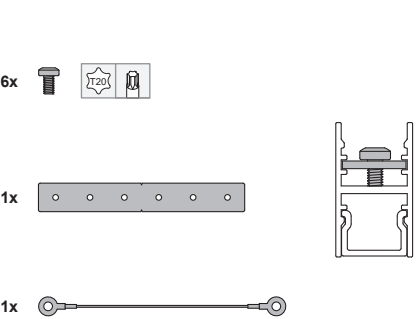




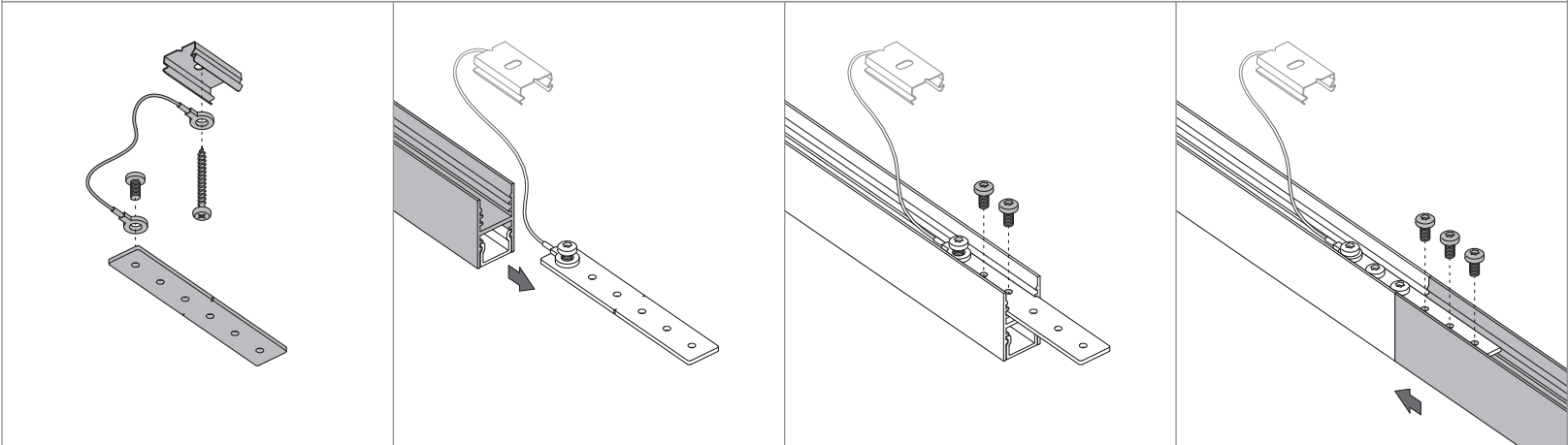
SLD20 - surface installation (2/2) (180° / 90° connection)

936300XX\_936310XX\_93632000\_93632100\_93632400\_93632500\_93632800\_93633000

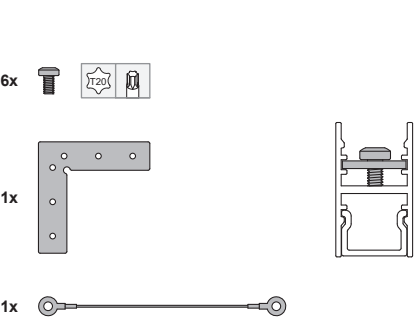
180° surface connection, components.



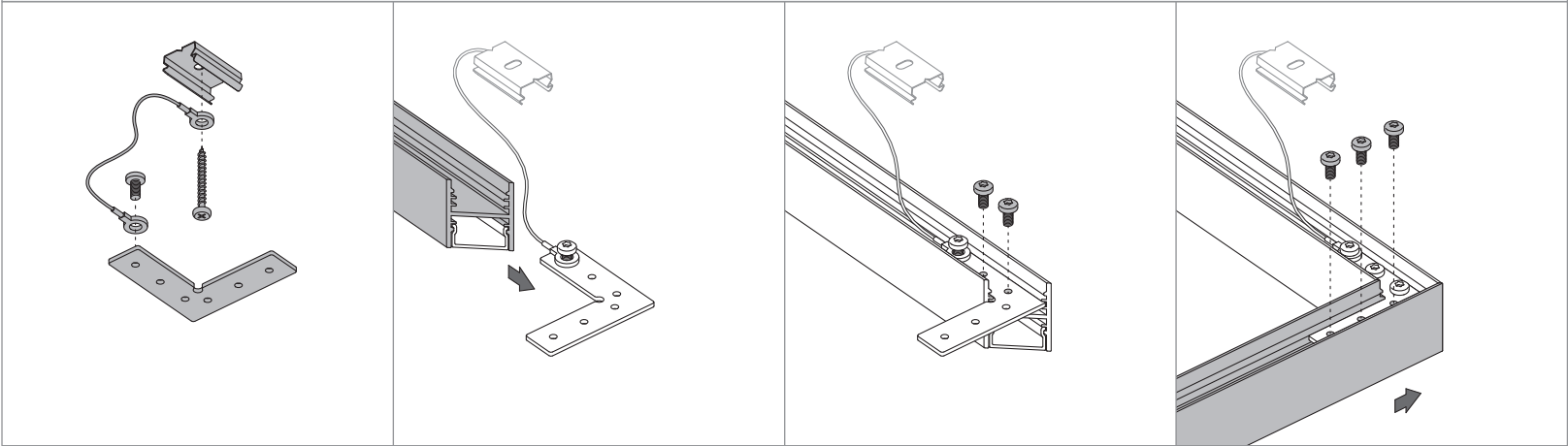
180° surface connection, installation.



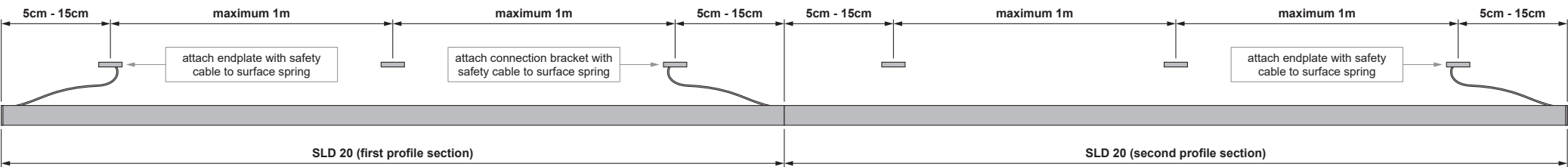
90° surface connection, components.



90° surface connection, installation.



Fixation spring information, when 90° / 180° surface connection is used.





SLD20 - suspended installation (1/3)

936300XX\_936310XX\_93632000\_93632100\_93632400\_93632500\_936326XX\_936327XX\_936331XX\_936332XX\_936333XX

Mount the cable holders to the ceiling.

For sloped ceilings: cable holders must be combined with hinge (not included).

Add the suspension kits to the base profile.

Suspension kit information.

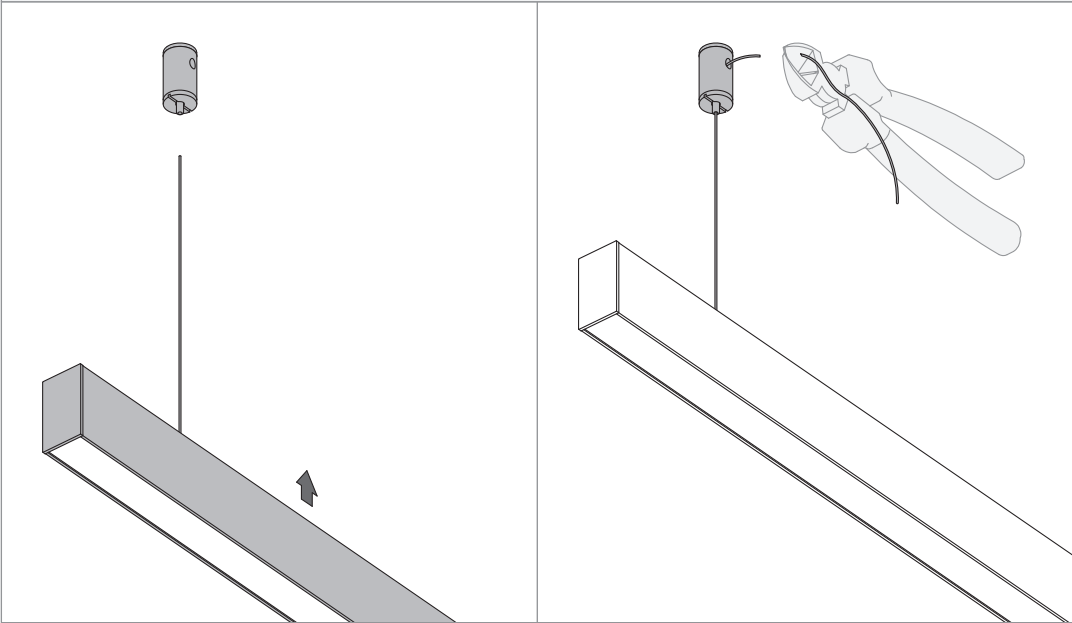
Dimensions.



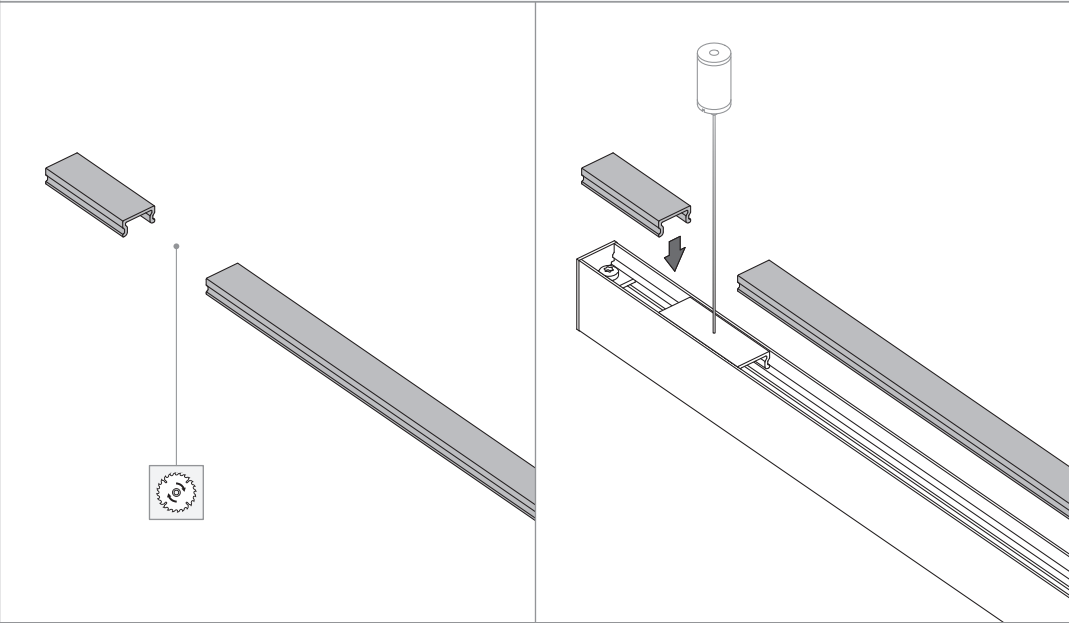
SLD20 - suspended installation (2/3)

936300XX\_936310XX\_93632000\_93632100\_93632400\_93632500\_936326XX\_936327XX\_936331XX\_936332XX\_936333XX

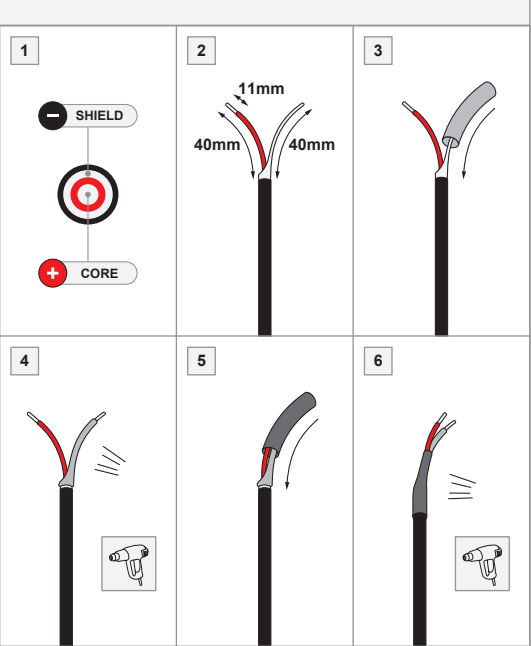
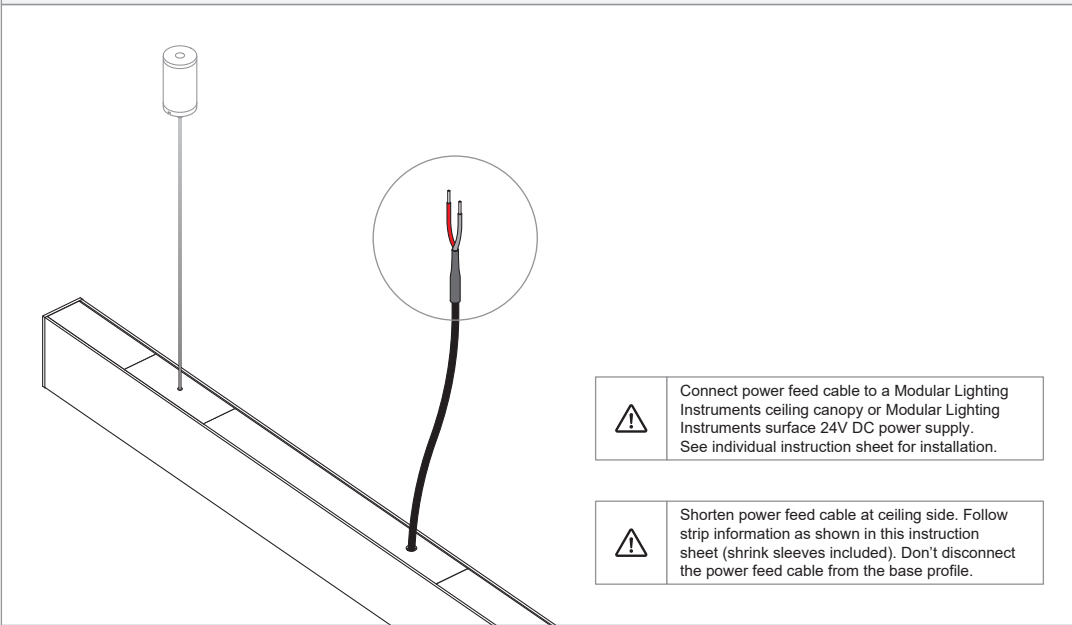
Guide the steel cables through the cable holders.



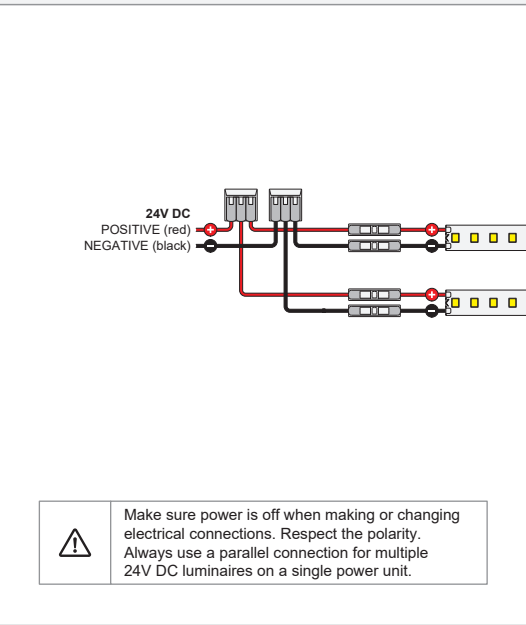
Cut the cover (polycarbonate) to length and click the pieces in the top of the base profile.



Power feed cable information.



Electrical connection.

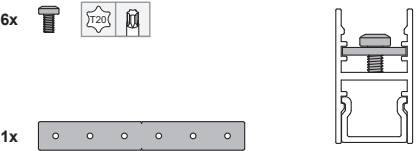




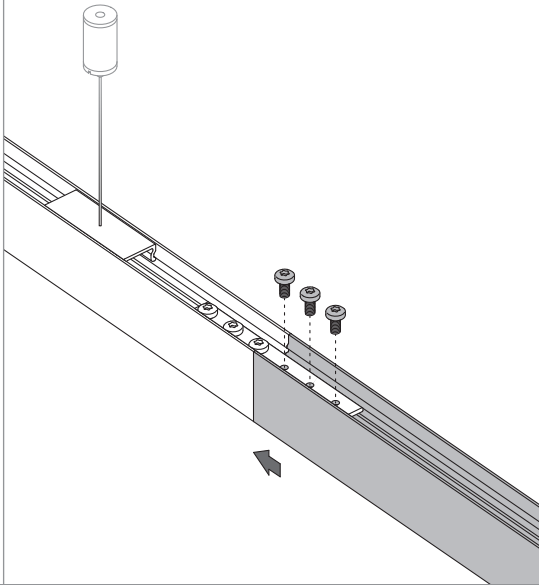
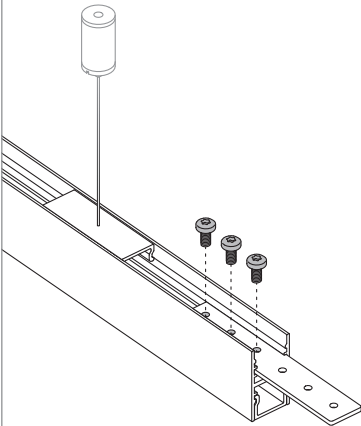
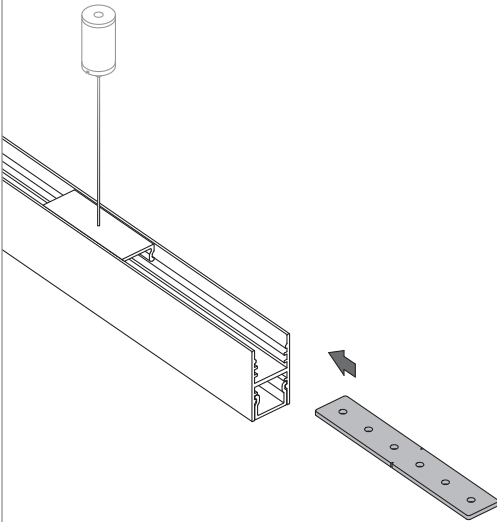
SLD20 - suspended installation (3/3) (180° / 90° connection)

936300XX\_936310XX\_93632000\_93632100\_93632400\_93632500\_936326XX\_936327XX\_936331XX\_936332XX\_936333XX

180° suspended connection, components.



180° suspended connection, installation.



90° suspended connection, components.



90° suspended connection, installation.

