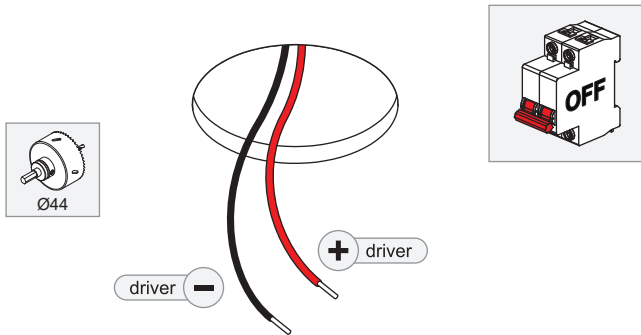


# Minude Out Recessed 49 23 Outdoor 1x IP54 LED Medium DE

138700XX\_138701XX

1

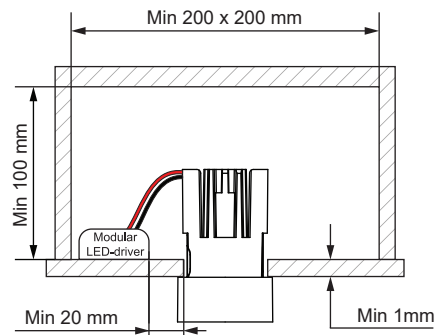


ELECTRICAL SPECS LED-FIXTURE			
Drive Current (mA)	Forward Voltage		Power (W)
	min (Vf)	max (Vf)	
350	14,8	18,0	5,7
500	15,2	18,6	8,5
+ RED		- BLACK	
For serial connection, respect polarity! Not suited for connection to mains voltage. Combine with a Modular LED-driver.			

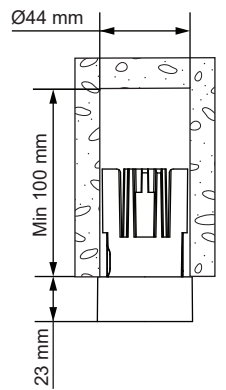
### Minimum volume requirement



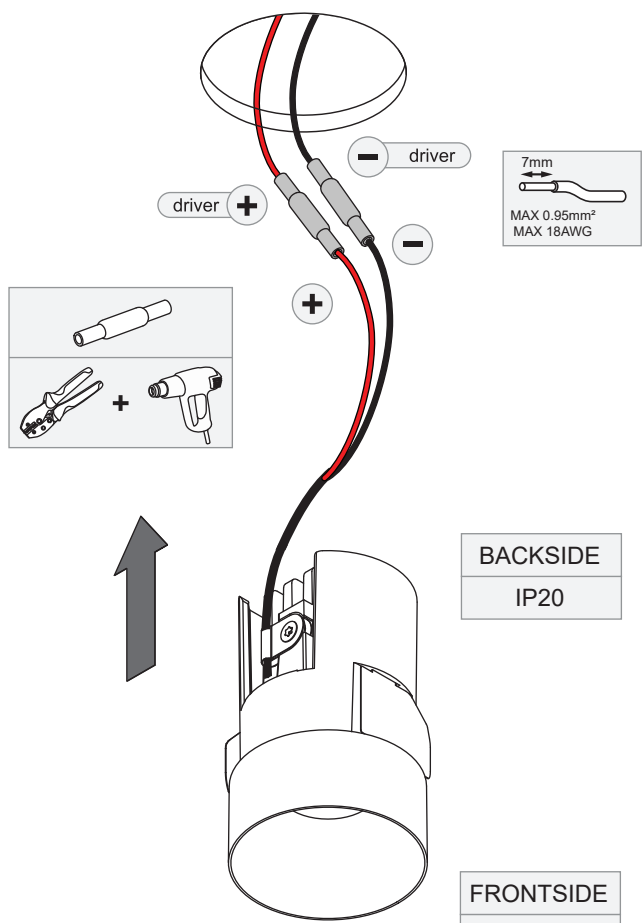
With driver in false ceiling:



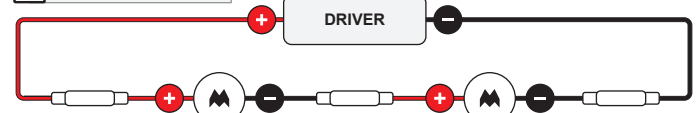
In concrete:



2

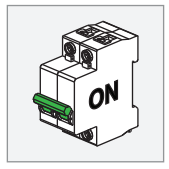
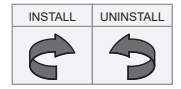
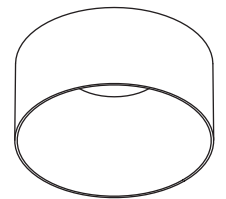


### ⚠ SERIAL CONNECTION:



Always use a serial connection for multiple luminaires on a single driver!  
Only use luminaires with the same input ratings!

3

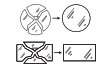


NOT SUITABLE FOR INSTALLATION  
≤5KM FROM THE COAST



### CLEANING INSTRUCTIONS

To avoid corrosion, clean at least quarterly with a non-abrasive cloth and a neutral detergent. Parts of the fixture which are not protected by the installation housing may not come into contact with the ground or aggressive chemical material (e.g. fertilizers, weed killers, lime,...). Excessive use of de-icing agent in the vicinity of the fixture must be avoided.



Replace protective shield when broken. The luminaire shall only be used complete with its protective shield.  
Reference number: 1014378



### PREVENTING ELECTROSTATIC DAMAGE

A discharge of static electricity may damage sensitive components. Therefore do not touch the LED nor the stripped parts of the wires with bare hands. Always be properly insulated by using ESD gloves.

### DRIVERS & ACCESSORIES

For latest version of driver matrix and available accessories check [www.supermodular.com](http://www.supermodular.com) or connect with your sales contact.

