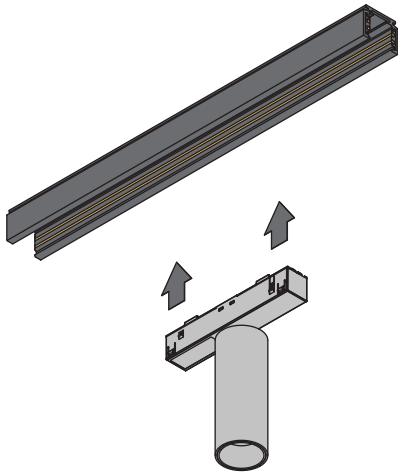


Nyto Track 48V Adjustable 30 1x LED Non-Dim

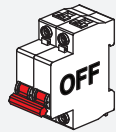
138200XX\_138203XX\_138206XX\_138209XX\_138212XX\_138215XX

1.1 INSTALLATION

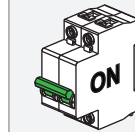
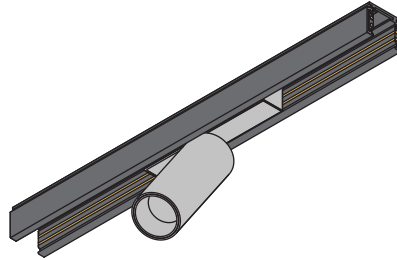
⚠ ONLY TO BE INSTALLED OUTSIDE ARM'S REACH



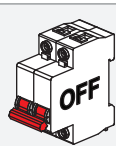
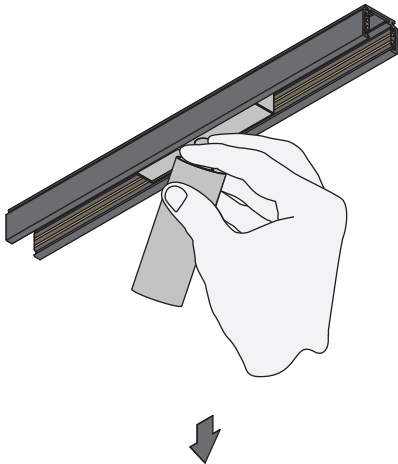
VOLTAGE	48 V
POWER spot	5.2 W
POWER medium, flood	7.1 W



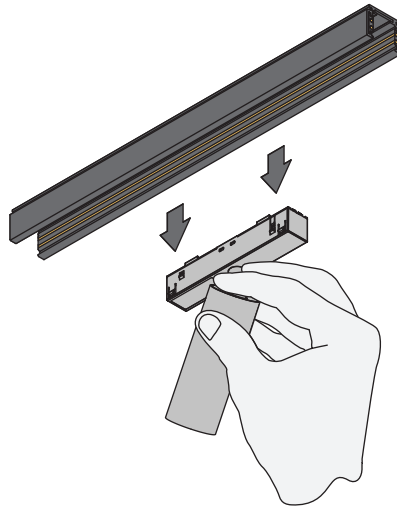
1.2 INSTALLATION



2.1 UNINSTALL

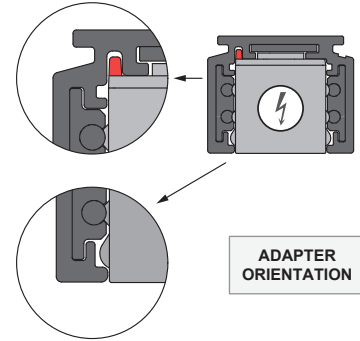


2.2 UNINSTALL

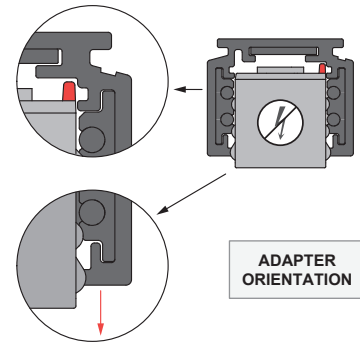


⚠ Turn off power before taking out luminaires from the track system

ELECTRICAL



ADAPTER ORIENTATION



ADAPTER ORIENTATION



Replace protective shield when broken. The luminaire shall only be used complete with its protective shield.  
Reference number: 1016387 (spot and medium), 1016388 (flood).



**LIGHT SOURCE - DO NOT TOUCH LED**  
Touching the LED can result in permanent damage of the light source. The light source and/or driver contained in this luminaire shall only be replaced by the manufacturer or his service agent or a similar qualified person.



**PREVENTING ELECTROSTATIC DAMAGE**  
A discharge of static electricity may damage sensitive components. Therefore do not touch the LED nor the stripped parts of the wires with bare hands. Always be properly insulated by using ESD gloves.

DRIVERS & ACCESSORIES

For latest version of driver matrix and available accessories check [www.supermodular.com](http://www.supermodular.com) or connect with your sales contact.

