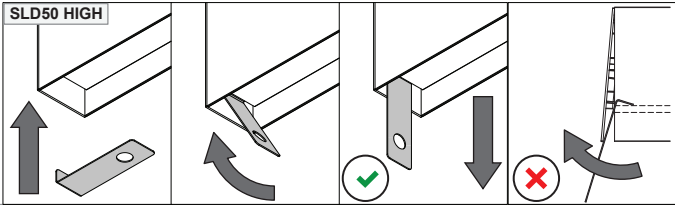
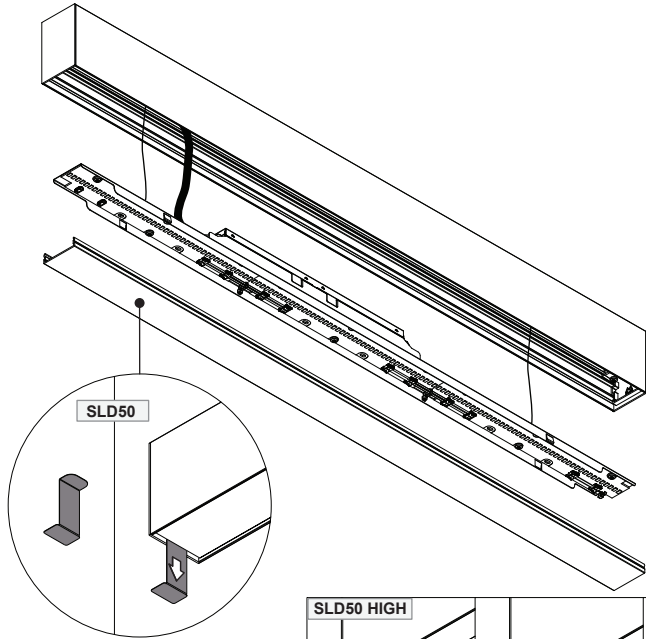
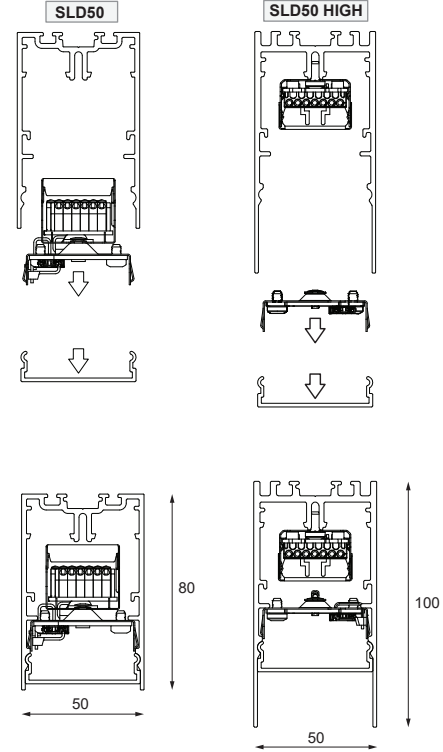


SLD50 (HIGH) LEDLINE 2700-6500K Tunable White DALI

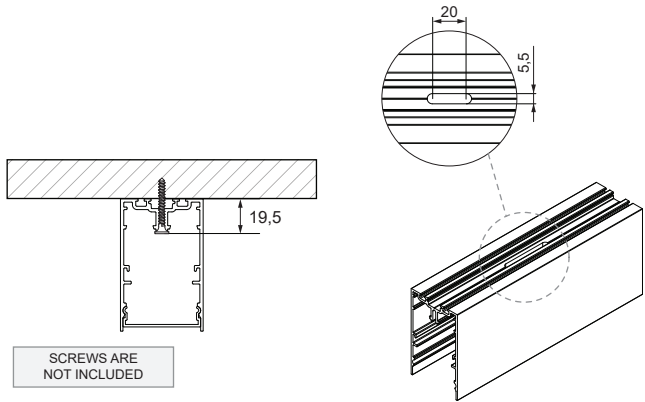
98564303\_98564304\_98564305\_98564306

OPEN PROFILE

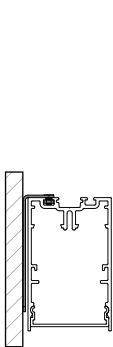


MOUNTING OPTIONS

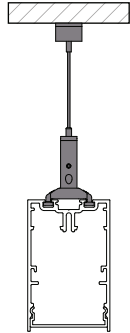
SURFACE



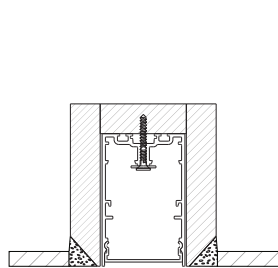
WALL\*



SUSPENDED\*

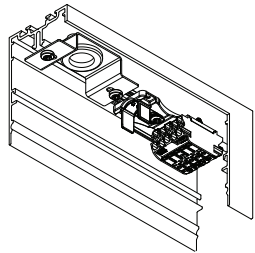


RECESSED (TRIMLESS)\*

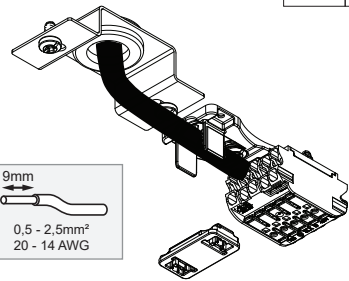


\* SEE INSTRUCTION MANUALS

CONNECTION



N	BLUE
L	BROWN
⊕	GREEN YELLOW
D+	RED
D-	BLACK



DALI tunable white control

recommended use: DALI2 application controller & input device with support for colour control (Part 209, DT8, Type Tc)  
the function in installations with other devices must be tested for compliance in advance.

max QTY of drivers on MCB

MCB type	B10	B13	B16	C10	C13	C16
number of LED drivers	14	18	22	14	18	22



On site conditions (e.g. heat, humidity, ...) can lead to expansion of the diffuser. Therefore onsite shortening of the diffuser can be required



Replace protective shield when broken. The luminaire shall only be used complete with its protective shield.  
Reference number: SLD50 Poly In (1012155) - SLD50 Prismatic (1012157) - SLD50 Poly Out (1012157)



LIGHT SOURCE - DO NOT TOUCH LED

Touching the LED can result in permanent damage of the light source. The light source contained in this luminaire shall only be replaced by the manufacturer or his service agent or a similar qualified person.



PREVENTING ELECTROSTATIC DAMAGE

A discharge of static electricity may damage sensitive components. Therefore do not touch the LED nor the stripped parts of the wires with bare hands. Always be properly insulated by using ESD gloves.



220-230V  
50-60Hz

1-10V

PUSH

DALI



IP 20



UK  
CA

