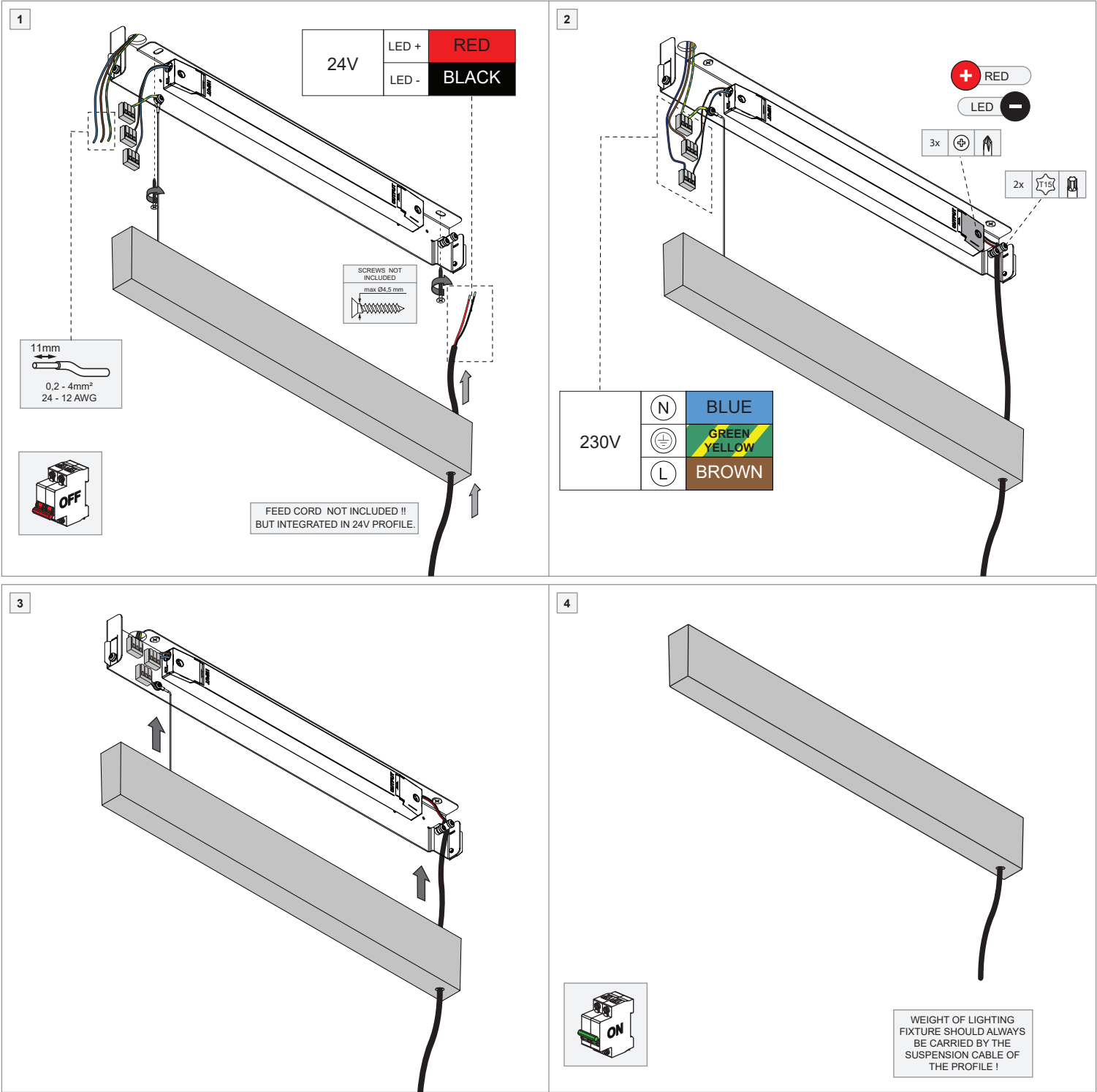


LED Driver Constant Voltage 24V Surface (For Suspended Mounting) Non-Dim 100W

93009504_93009505



ELECTRICAL RATINGS				
VERSION	INPUT		OUTPUT	
	Voltage (V)	Frequency (Hz)	Voltage (V)	Power (W)
93009504-93009505 (100W)	230 AC	50 - 60	24 DC	100

MOUNTING HOLES	

SECONDARY ELECTRICAL CONNECTION WITH 24V LEDSTRIP (PROFILE)

70mm

5mm

0,75mm²
18 AWG

24V

LED +	RED
LED -	BLACK

WEIGHT OF LIGHTING
FIXTURE SHOULD ALWAYS
BE CARRIED BY THE
SUSPENSION CABLE OF
THE PROFILE !

PREVENTING ELECTROSTATIC DAMAGE

A discharge of static electricity may damage sensitive components. Therefore do not touch the LED nor the stripped parts of the wires with bare hands. Always be properly insulated by using ESD gloves.

CAN BE COMBINED WITH

(NOT INCLUDED)

- Profiles with ledstrip = max.100W
- Geometry Suspended Adjustable

LIGHT ENGINES & ACCESSORIES

For latest version of all light engines and available accessories check www.supermodular.us or connect with your sales contact.

