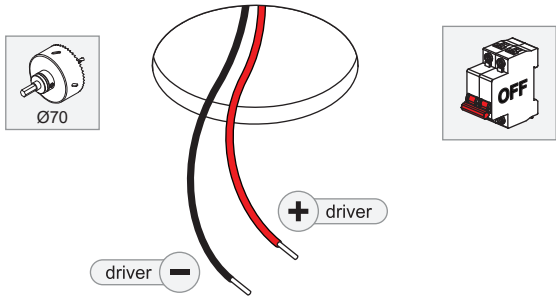


Thimble Recessed Adjustable 74 1x LED Spot DE

116212XX_116213XX

1

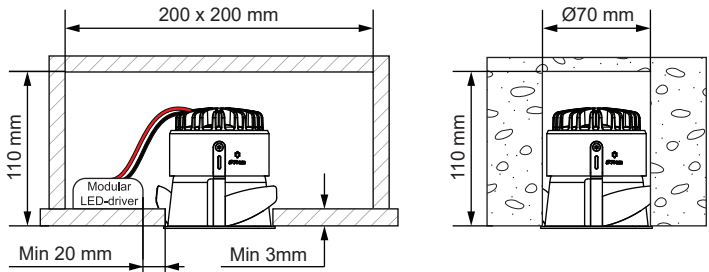


ELECTRICAL SPECS LED-FIXTURE

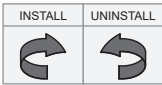
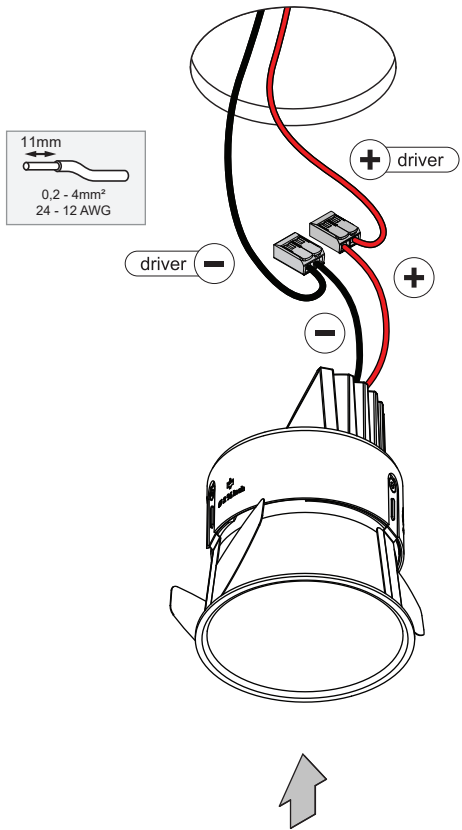
Drive Current (mA)	Forward Voltage		Power (W)
	min (Vf)	max (Vf)	
350	11,2	13,2	4,1
500	11,2	13,2	6,1
+ RED		- BLACK	

For serial connection, respect polarity!
Not suited for connection to mains voltage.
Combine with a Modular LED-driver.

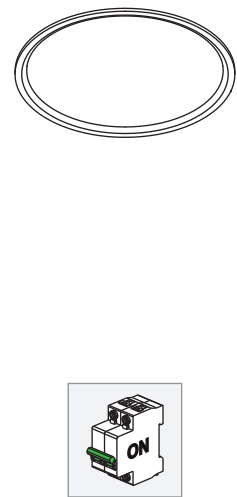
Minimum volume requirement



2



3



Replace protective shield when broken. The luminaire shall only be used complete with its protective shield.
Reference number: 1014378

LIGHT SOURCE - DO NOT TOUCH LED
Touching the LED can result in permanent damage of the light source. The light source and/ or driver contained in this luminaire shall only be replaced by the manufacturer or his service agent or a similar qualified person.

PREVENTING ELECTROSTATIC DAMAGE
A discharge of static electricity may damage sensitive components. Therefore do not touch the LED nor the stripped parts of the wires with bare hands. Always be properly insulated by using ESD gloves.

DRIVERS & ACCESSORIES
For latest version of driver matrix and available accessories check www.supermodular.com or connect with your sales contact.

