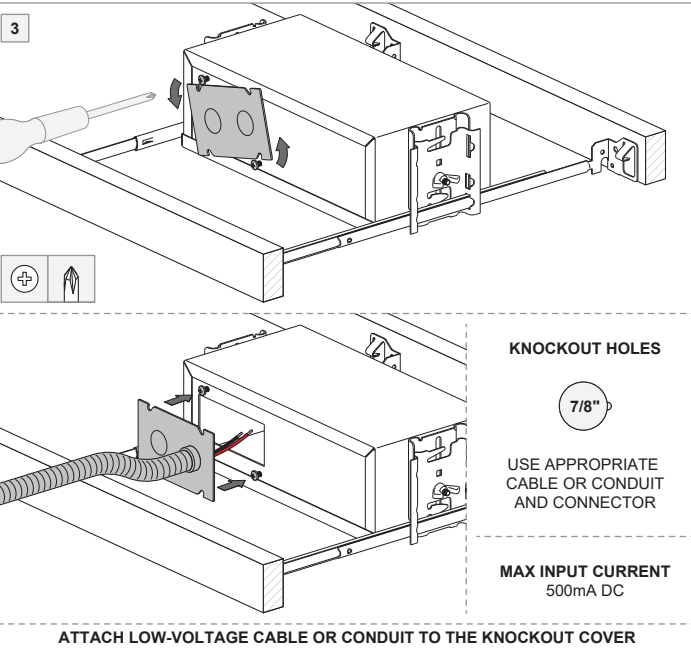
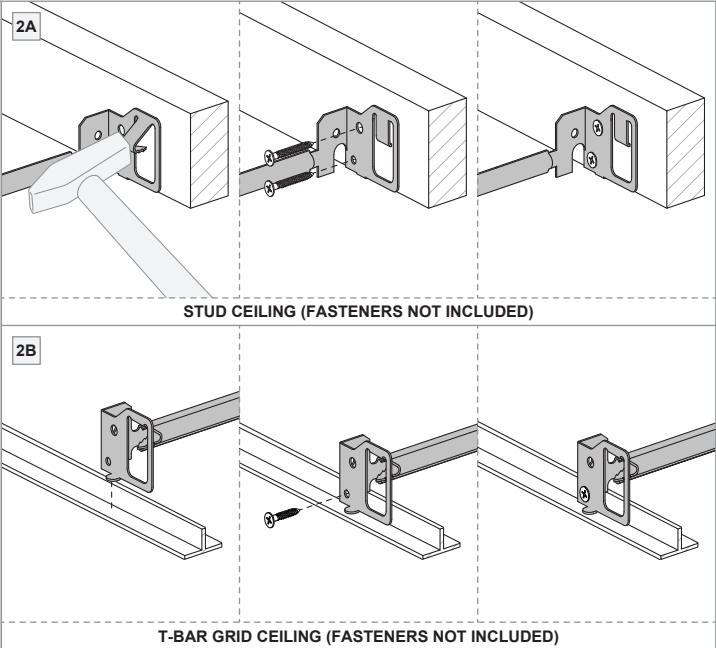
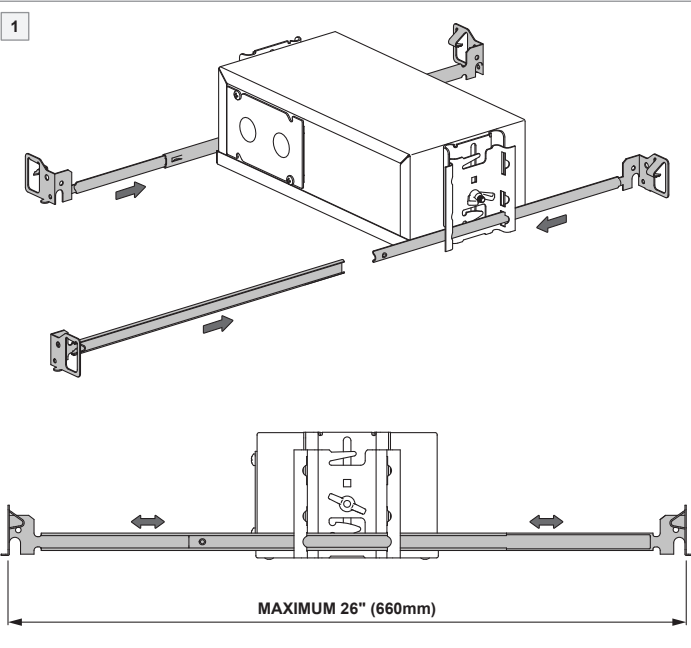
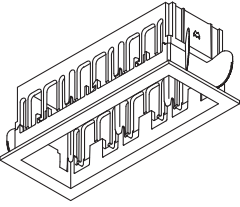
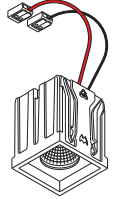
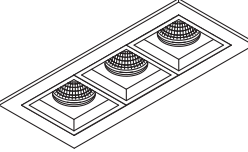



IC-BOX Qbini 3x LED for remote driver 500mA

US\_12068304



MUST BE COMBINED WITH		(NOT INCLUDED)
		
QBINI FRAME 3X	&	QBINI LIGHT ENGINES *
<p>* ALL COMPATIBLE LIGHT ENGINES SEE MARKING ON IC-BOX</p> <p>* VOLTAGE &amp; POWER RATINGS SEE MARKING ON LIGHT ENGINE OR INDIVIDUAL INSTRUCTIONS</p>		
INSTALLATION: SEE INDIVIDUAL INSTRUCTIONS		
		
<b>LED RECESSED LUMINAIRE BOX - TYPE IC</b>		
<ul style="list-style-type: none"><li>- Read all instructions.</li><li>- Save these instructions.</li></ul>		
<b>BASIC SAFETY PRECAUTIONS</b>		
<ul style="list-style-type: none"><li>- Min. 95°C supply conductors.</li><li>- Inherently protected.</li><li>- Use only with Class 2 power unit.</li><li>- Only make Class 2 connections inside the box.</li></ul>		
<b>PREVENTING ELECTROSTATIC DAMAGE</b>		
 <p>A discharge of static electricity may damage sensitive components. Always be properly grounded when touching leads or circuitry inside the luminaire. Use a wrist strap connected by a ground cord to the housing. Avoid touching the light sources with bare hands.</p>		
<b>LIGHT ENGINES &amp; ACCESSORIES</b>		
<p>For latest version of all light engines and available accessories check <a href="http://www.supermodular.us">www.supermodular.us</a> or connect with your sales contact.</p>		