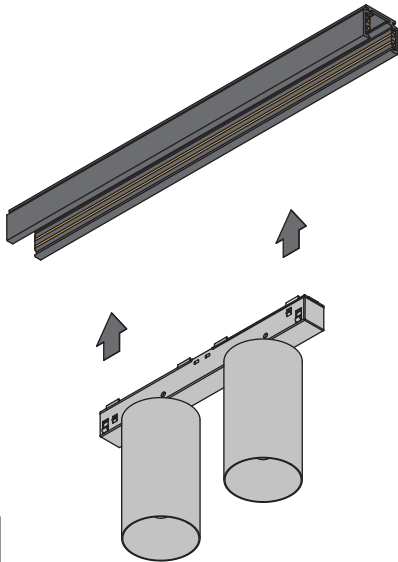


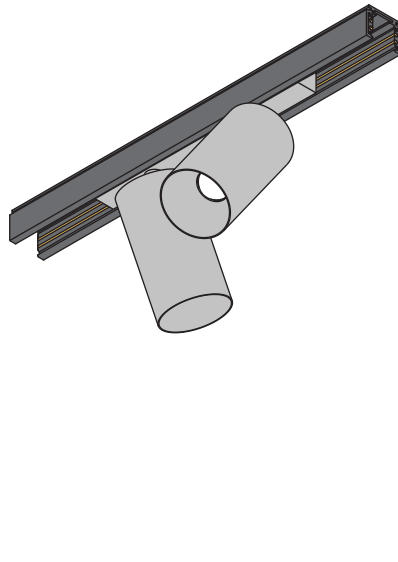
Minude 45 Adjustable Track 48V 2x

137114XX_137115XX_137116XX_137117XX

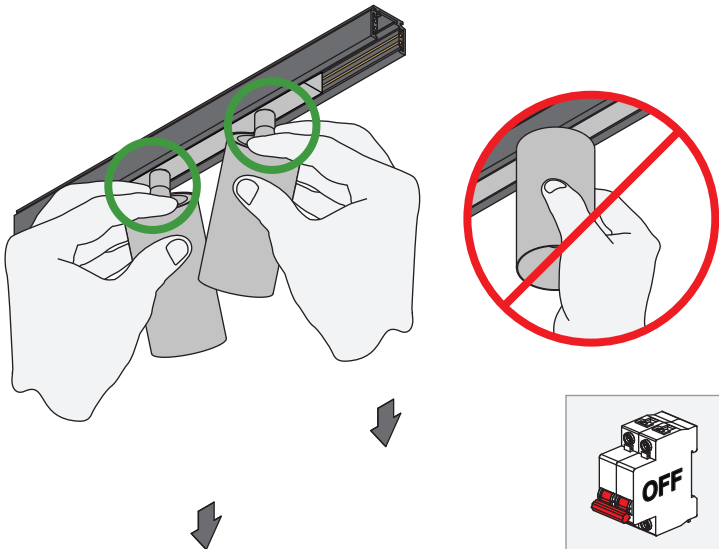
1.1 INSTALLATION



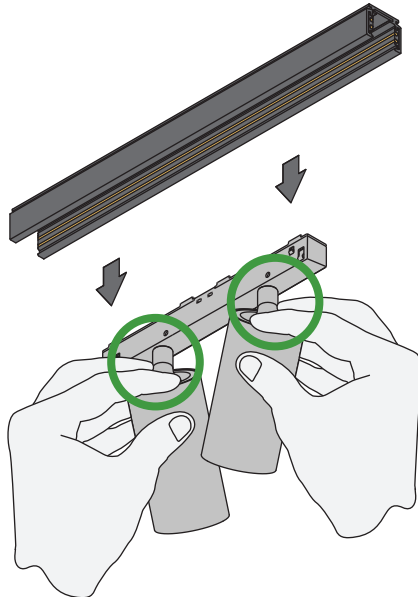
1.2 INSTALLATION



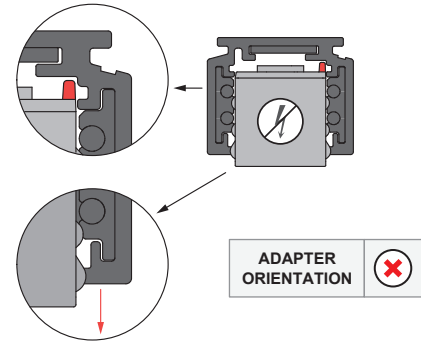
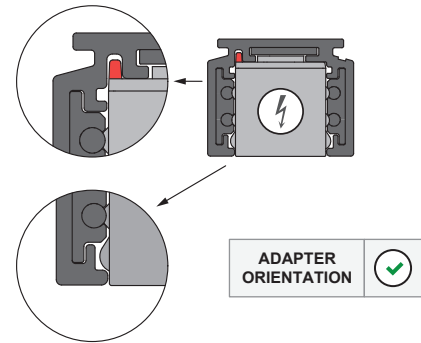
2.1 UNINSTALL



2.2 UNINSTALL



ELECTRICAL



Replace protective shield when broken. The luminaire shall only be used complete with its protective shield.
Reference number: 1014378

LIGHT SOURCE - DO NOT TOUCH LED
Touching the LED can result in permanent damage of the light source. The light source contained in this luminaire shall only be replaced by the manufacturer or his service agent or a similar qualified person.

PREVENTING ELECTROSTATIC DAMAGE
A discharge of static electricity may damage sensitive components. Therefore do not touch the LED nor the stripped parts of the wires with bare hands. Always be properly insulated by using ESD gloves.

DRIVERS & ACCESSORIES
For latest version of driver matrix and available accessories check www.supermodular.com or connect with your sales contact.