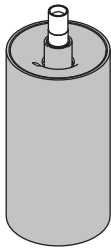




Minude 45 adjustable jack Spot Beam LED GE

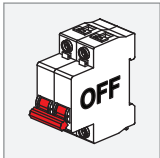
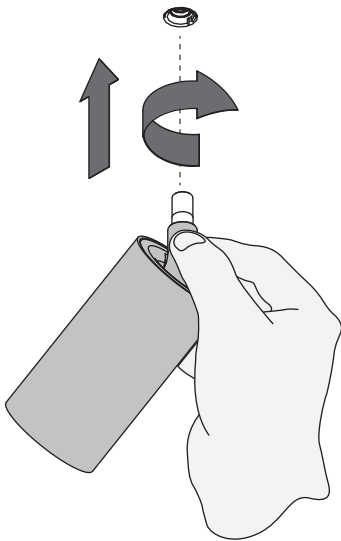
137106XX\_137107XX

1.1 INSTALLATION: COMPONENTS

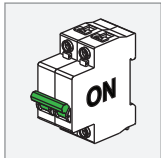
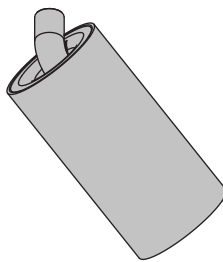


ELECTRICAL SPECS LED-FIXTURE			
Drive Current (mA)	Forward Voltage		Power (W)
	min (Vf)	max (Vf)	
350	11,2	13,2	4,1
500	11,2	13,2	6,1
 RED		 BLACK	
For serial connection, respect polarity! Not suited for connection to mains voltage. Combine with a Modular LED-driver.			

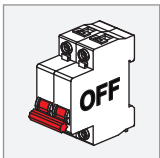
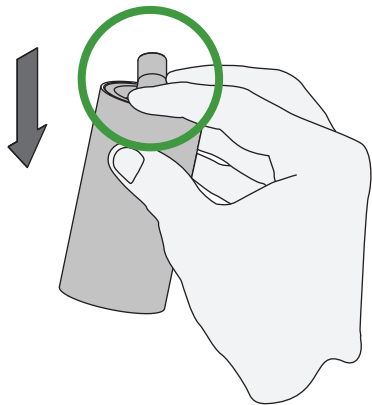
1.2 INSTALLATION: PLUG IN "MODUPOINT LED"



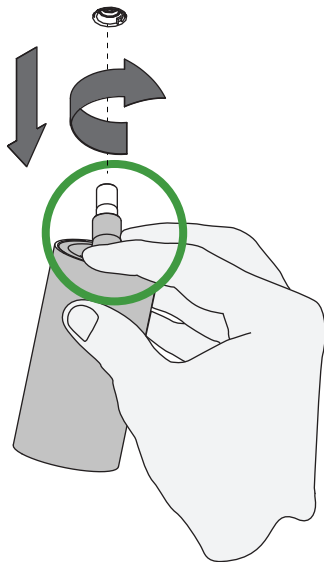
1.3 INSTALLATION: POWER ON



2.1 UNINSTALL



2.2 UNINSTALL



PREVENTING ELECTROSTATIC DAMAGE

A discharge of static electricity may damage sensitive components. Therefore do not touch the LED nor the stripped parts of the wires with bare hands. Always be properly insulated by using ESD gloves.



Replace protective shield when broken. The luminaire shall only be used complete with its protective shield.  
Reference number: 1014378

DRIVERS & ACCESSORIES

For latest version of driver matrix and available accessories check [www.supermodular.com](http://www.supermodular.com) or connect with your sales contact.