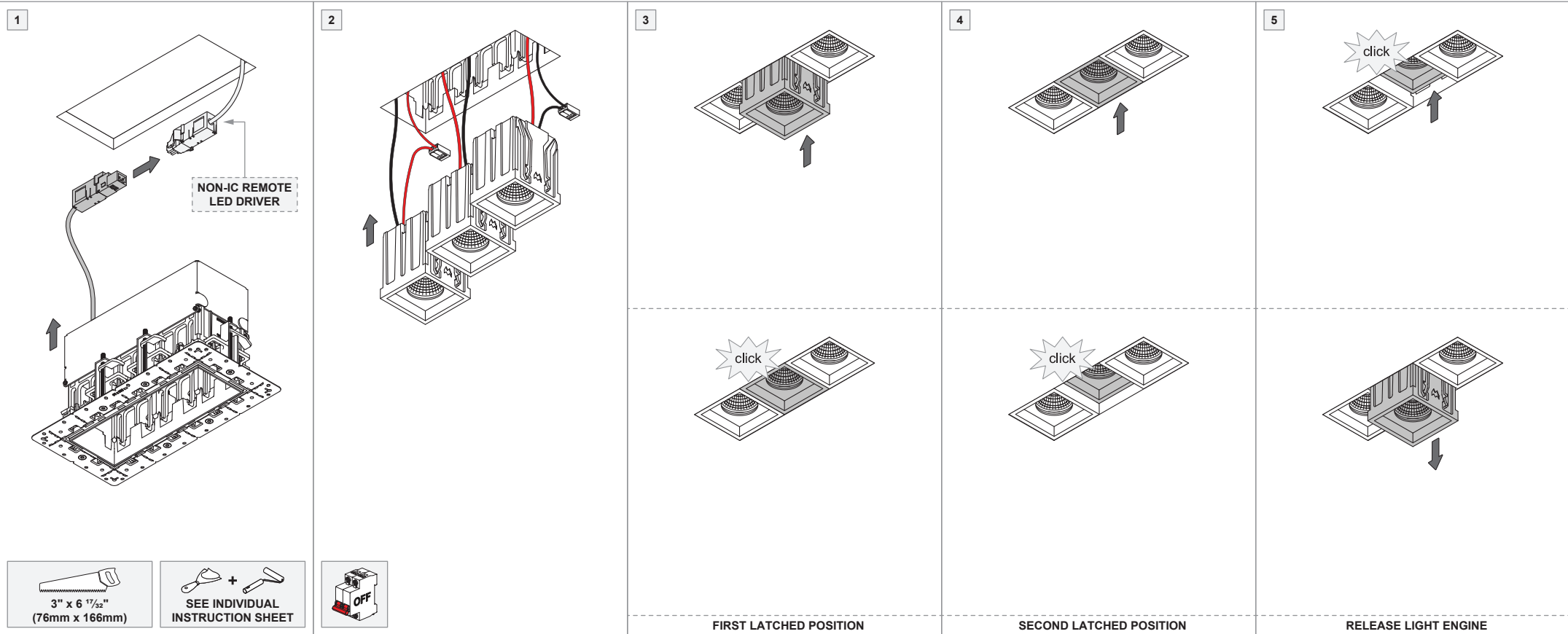


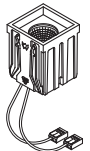
# Qbini trimless frame 3x for non-IC remote driver 500mA

US\_141830XX



**MUST BE COMBINED WITH**

**(NOT INCLUDED)**

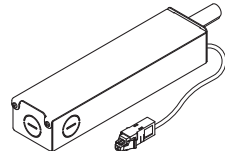


**QBINI LIGHT ENGINES \***

\* ALL COMPATIBLE LIGHT ENGINES  
SEE MARKING ON FRAME

\* VOLTAGE & POWER RATINGS  
SEE MARKING ON LIGHT ENGINE  
OR INDIVIDUAL INSTRUCTIONS

&

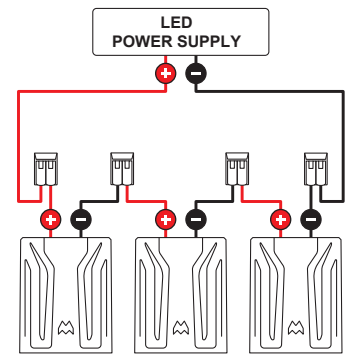


**NON-IC REMOTE LED DRIVER \*\***

\*\* DRIVER INSTALLATION  
SEE INDIVIDUAL INSTRUCTIONS

\*\* VOLTAGE & POWER RATINGS  
CHECK DRIVER OUTPUT RATINGS  
TO ENSURE COMPATIBILITY

### ELECTRICAL CONNECTION INSIDE THE FRAME



**- BLACK**

**+ RED**

### LED LUMINAIRE FRAME - FOR NON-IC REMOTE DRIVER

- Read all instructions.
- Save these instructions.

#### BASIC SAFETY PRECAUTIONS

- Suitable for damp locations.
- Access above ceiling required.



#### PREVENTING ELECTROSTATIC DAMAGE

A discharge of static electricity may damage sensitive components. Always be properly grounded when touching leads or circuitry inside the luminaire. Use a wrist strap connected by a ground cord to the housing. Avoid touching the light sources with bare hands.



#### LIGHT SOURCE - DO NOT TOUCH LED

Touching the LED can result in permanent damage of the light source. The light source contained in this luminaire shall only be replaced by the manufacturer or his service agent or a similar qualified person.

#### LIGHT ENGINES, POWER UNITS & ACCESSORIES

For latest version of all light engines, power units and available accessories check [www.supermodular.us](http://www.supermodular.us) or connect with your sales contact.

