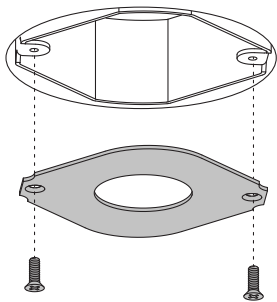


Backplate 4x4 Minude Adjustable 1.8

US_120540XX

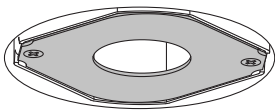
1



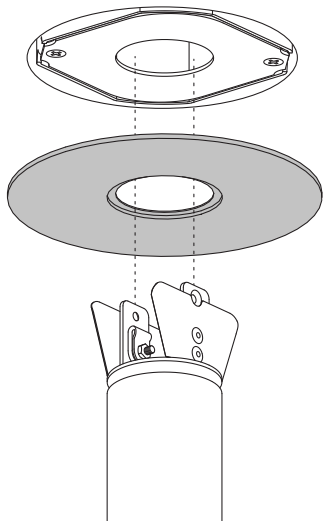
2x



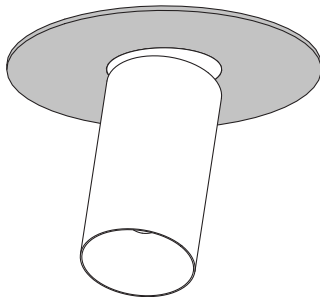
2



3

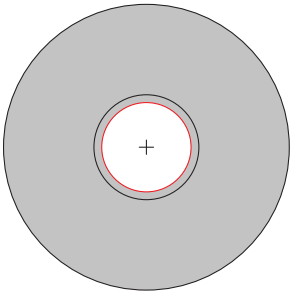


4

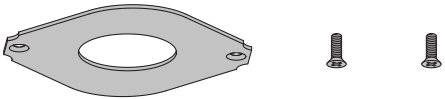


BACKPLATE (COVER) IS CLAMPED BETWEEN THE LUMINAIRE AND THE JUNCTION BOX PLATE (SEE INDIVIDUAL INSTRUCTION FOR LUMINAIRE INSTALLATION)

LUMINAIRE MOUNTING HOLE



JUNCTION BOX PLATE AND SCREWS ARE INCLUDED WITH THE LUMINAIRE



INSTALLATION INSTRUCTION

(ACCESSORY)

- Read all instructions.
- Save these instructions.



PAINTING

The backplate (cover) can be painted in the field to match the color of the ceiling or the wall. Connect with your sales contact for detailed information.

MUST BE COMBINED WITH

(NOT INCLUDED)

- Minude Semi-Recessed Adjustable 1.8 1x DE

LUMINAIRES & ACCESSORIES

For latest version of all available luminaires and accessories, check www.supermodular.com or connect with your sales contact.

